



Wilton Manors Historical Society

2020 Wilton Drive • Wilton Manors, Florida 33305

www.WiltonManorsHistoricalSociety.org

954-617-5889

March 4, 2012

HISTORICAL MYSTERIOUS PICTURESQUE NEW RIVER

A 1979 reproduction of an out-of-print publication by Austin Smith, described in the 1940 Library of Congress publication "Catalog of Copyright Entries. Part 1. [B] Group 2. Pamphlets, Etc. New Series" as:

Smith Austin, North Plainfield NJ. Historical mysterious picturesque New River. Linebru sketches showing various scenes buildings and characters in Ft Lauderdale Fla. Aug 27 1940. AA 340763

This booklet was scanned from an original document found in the collection of the Wilton Manors Historical Society. The actual donor is unknown. Based on the notation in the upper right corner the original owner is believed to be Jett Schmelz. At the time of publication Mrs. Schmelz would have been active with in the Wilton Manors Historical Society and the Wilton Manors Friends of the Library.

After digitizing, the original document was transferred to the collection of the Broward County Historical Commission.

--RAU

Let's
copy -



HISTORICAL MYSTERIOUS PICTURESQUE NEW RIVER

AUSTIN SMITH

Beautiful

FT. LAUDERDALE, FLORIDA

America's Fastest Growing City

*This memento of old Fort Lauderdale has been
reprinted for your enjoyment by the
Friends of the Library of Fort Lauderdale, Inc.*

This booklet constitutes the first reprinting of an item which has been out of print for many years. Copies of the original edition are exceedingly scarce because they were printed on newsprint which does not stand up well to the ravages of time.

Fortunately, a sound, original copy was provided through the generosity of August Burghard, a veteran publicist and journalist who has been closely involved in the eventful history of Broward County. From this original, new printing plates were made, with a good deal of care to eliminate the evidences of age and wear.

Mr. Burghard was a friend of Austin Smith, the artist who created *Historical Mysterious Picturesque New River*. Smith came to Fort Lauderdale in the early 1920s, built a home on S.W. 5th Place, and lived there with his wife, raising a daughter, Margaret, and a son, Austin, Jr.

The elder Smith was known and admired for the accuracy, diversity and abundance of his "Linebru" drawings of all phases of life and activity in his beloved Fort Lauderdale. Most of the pictures in this booklet were sketched from life. The older material was rendered from photographs or, in some cases, such as the Indian massacre of 1842, are based on traditional accounts.

In addition to being an artist, Smith was a skilled tennis player and taught the game to many. The Annual Austin Smith Tennis Tournament was staged here for years, according to August Burghard.

If this keepsake inspires you to delve more deeply into local history and folkways, you will be happy to know that the world's finest collection of Fort Lauderdale materials is housed in our library...where you are welcome to browse.

FREDERICK G. RUFFNER
President
Friends of the Library of Fort Lauderdale, Florida, Inc.

Friends of the Library of Fort Lauderdale, Florida, Inc.—1978-79 Board of Directors
Frederick G. Ruffner, President; Mrs. M. D. Roettger, Vice-President; Mrs. Marilyn L. Chadwick, Recording Secretary; Mrs. Alexander Alexander; Mrs. Christopher Fering; Mrs. Robert C. Fuller; Robert Hittel; Peter J. G. Mrs. Fred Nelson; Mrs. William G. Peacock, Jr.; Mrs. Abbot F. Reid; Mrs. Ralph D. Sneath; Miss P.

Additional copies of this keepsake are available at \$3.00 each
from the Friends of the Library of Fort Lauderdale, Florida, Inc.
P.O. Box 4831, Fort Lauderdale, Florida 33338

Historical Mysterious Picturesque NEW RIVER

LINEBRU SKETCHES

SHOWING VARIOUS SCENES

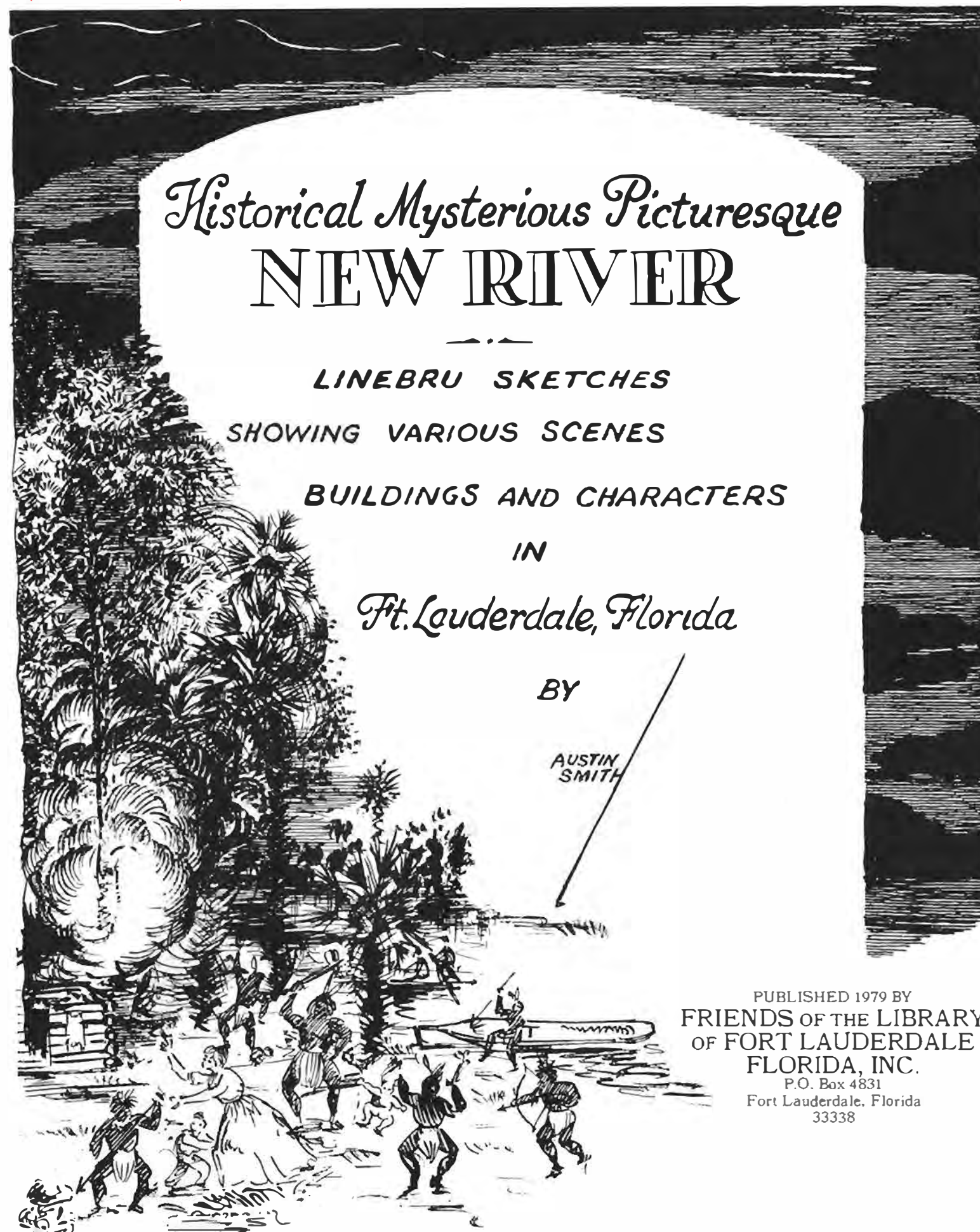
BUILDINGS AND CHARACTERS

IN

Ft. Lauderdale, Florida

BY

AUSTIN
SMITH



PUBLISHED 1979 BY
FRIENDS OF THE LIBRARY
OF FORT LAUDERDALE
FLORIDA, INC.
P.O. Box 4831
Fort Lauderdale, Florida
33338

COLEE MASSACRE BY THE SEMINOLE INDIANS AT TARPON BEND 1842

FORT LAUDERDALE BUILT IN 1839



1839



1893

THE LEGEND OF NEW RIVER

FT. LAUDERDALE, FLORIDA.

As told by the
Seminole Indians
is that the great
Spirit opened the
ground and the
river was formed
making a water road
from the Everglades
to the sea.



SEMINOLE INDIANS ON NEW RIVER FT. LAUDERDALE, FLA.

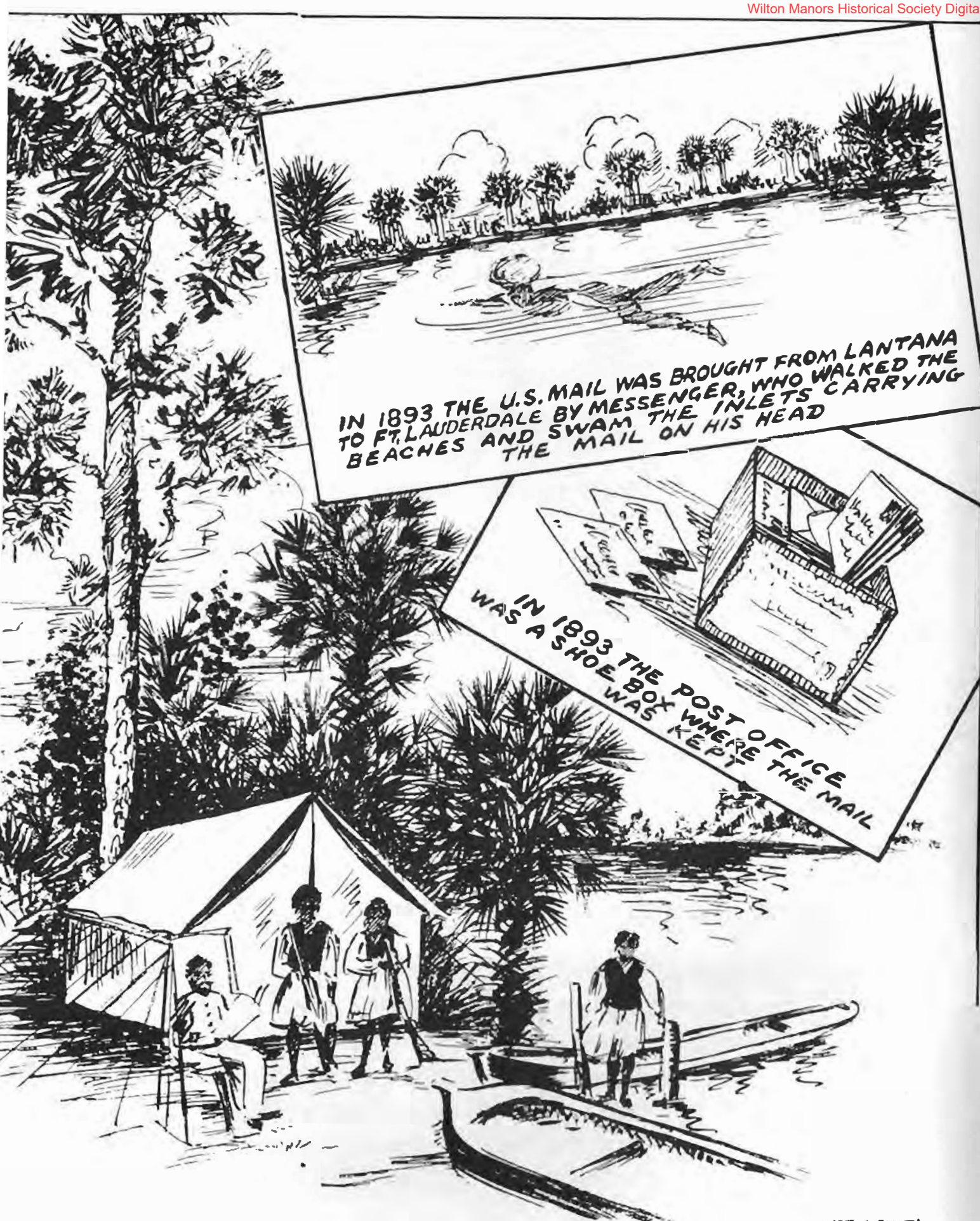


AUSTIN SMITH

DEDICATED TO THE MEMORY OF FRANK STRANAHAN THE FOUNDER OF FT. LAUDERDALE, FLORIDA

His personality had charm. His unfailing courtesy and fairness, his rare good judgement and loyalty, his industriousness made him successful in business. Modest, unassuming and genuine his life was a vital contribution to his time and generation. His death will not stay the inspiration of his work, nor break the bonds of affection of his friends.

Austin Smith his friend

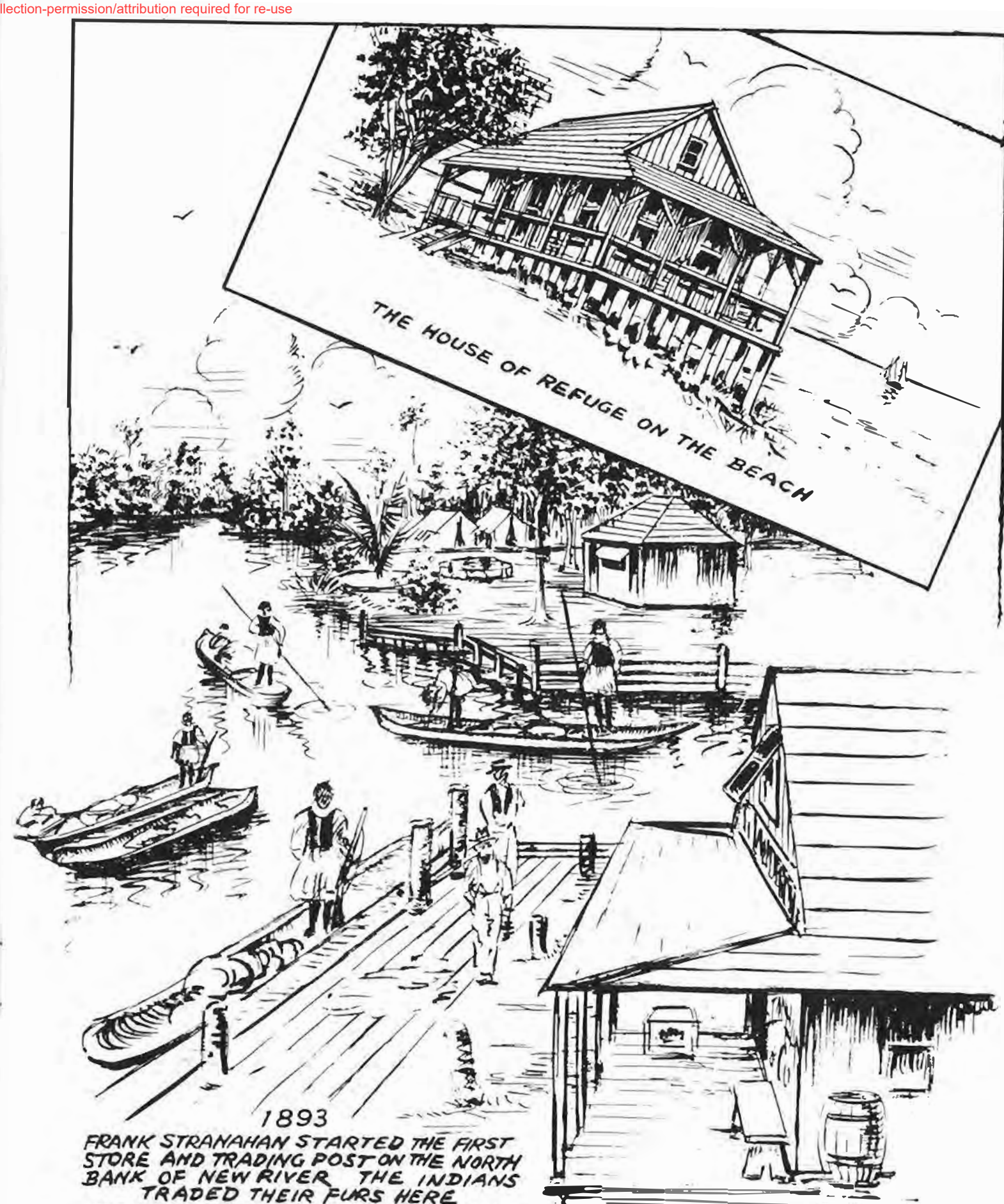


IN 1893 THE U.S. MAIL WAS BROUGHT FROM LANTANA TO FT. LAUDERDALE BY MESSENGER, WHO WALKED THE BEACHES AND SWAM THE INLETS CARRYING THE MAIL ON HIS HEAD

IN 1893 THE POST OFFICE WAS A SHOE BOX WHERE THE MAIL WAS KEPT

IN 1893, A CAMP AT TARPON BEND NEW RIVER WAS THE FIRST HOME OF FRANK STRANAHAN THE FOUNDER OF FT. LAUDERDALE, FLA

AUSTIN SMITH

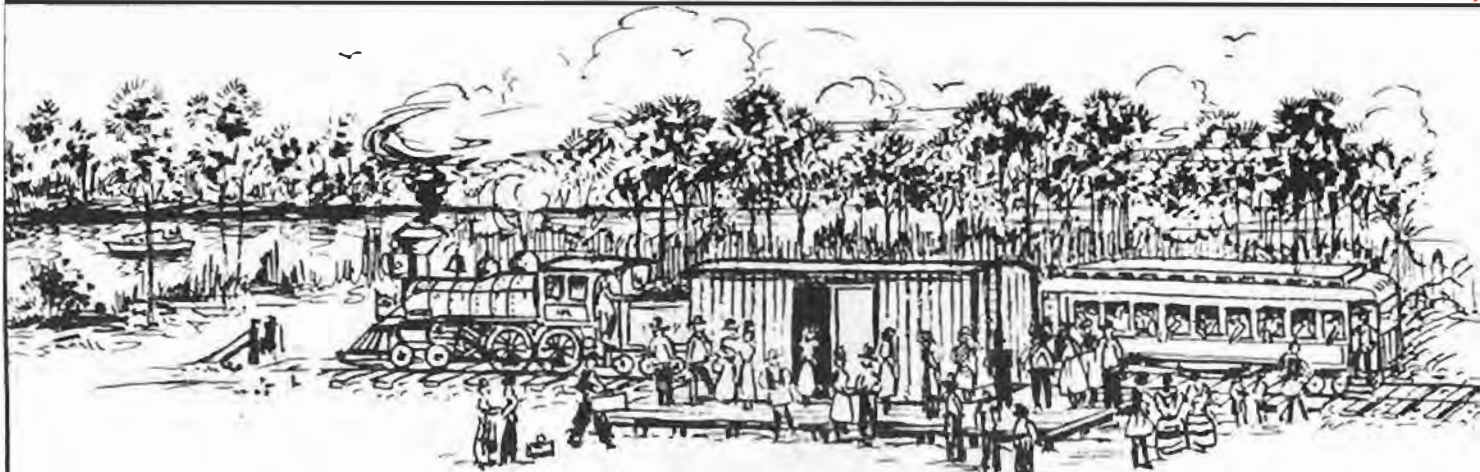


THE HOUSE OF REFUGE ON THE BEACH

1893

FRANK STRANAHAN STARTED THE FIRST STORE AND TRADING POST ON THE NORTH BANK OF NEW RIVER. THE INDIANS TRADED THEIR FURS HERE. THE FIRST ROYAL PALM TREE PLANTED. THE FIRST HOUSE BUILT

AUSTIN SMITH



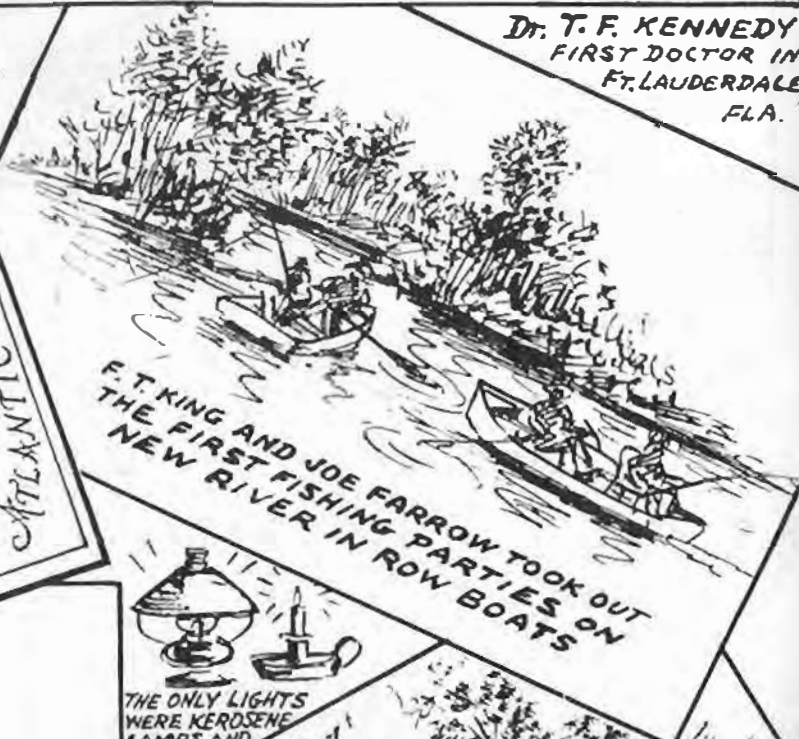
IN 1895 THE FIRST FLORIDA EAST COAST R.R. TRAIN ARRIVED AT FT. LAUDERDALE, FLA WHICH WAS THE END OF THE LINE. THE STATION WAS A FREIGHT CAR. KIT G. GOODWIN WAS THE FIRST AGENT



THE FT. LAUDERDALE STATE BANK ON NEW RIVER
THE FIRST BANK IN FT. LAUDERDALE, FLA.
FRANK R. OLIVER
FIRST PRESIDENT



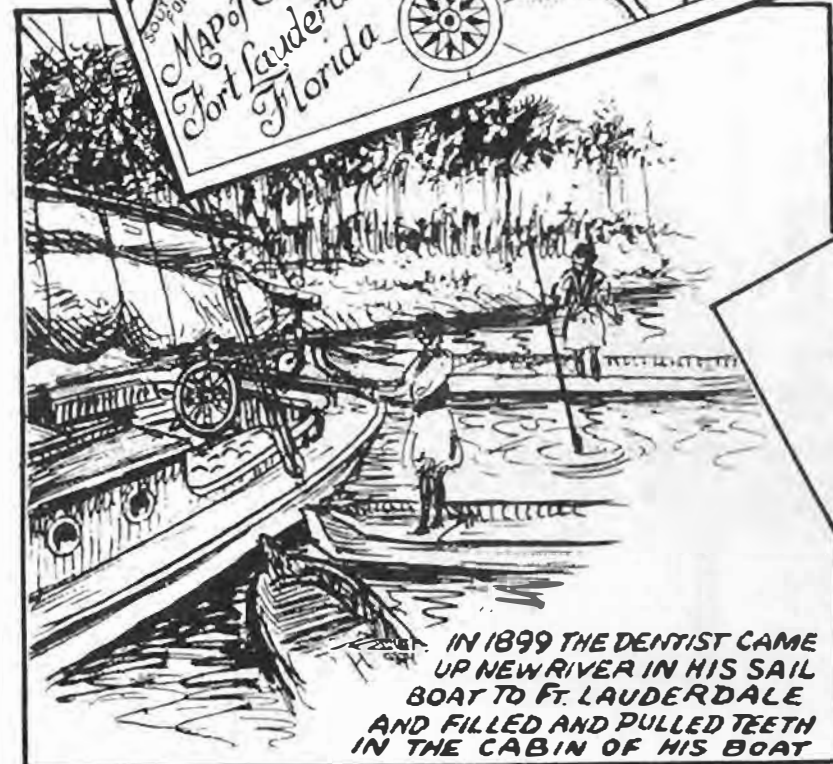
The New Business Section Started with STRANAHAN'S NEW STORE IN 1907
Where FRANK STRANAHAN BUILT HIS FIRST HOUSE AND TRADING POST 1893-1897
A FEW FEET WEST OF THE PRESENT FEDERAL HIGHWAY
Where FRANK STRANAHAN FIRST CAMPED AT TARPON BEND IN 1893 THIS WAS HIS HOME
NEW RIVER SOUND
THE HOUSE OF REFUGE
INLET
NORTH FORK
SOUTH FORK
NEW RIVER
Map of Early Fort Lauderdale Florida
Lake Mable
ATLANTIC OCEAN



F.T. KING AND JOE FARROW TOOK OUT THE FIRST FISHING PARTIES ON NEW RIVER IN ROW BOATS



THE ONLY LIGHTS WERE KEROSENE LAMPS AND CANDLES



IN 1899 THE DENTIST CAME UP NEW RIVER IN HIS SAIL BOAT TO FT. LAUDERDALE AND FILLED AND PULLED TEETH IN THE CABIN OF HIS BOAT



THE FIRST FT. LAUDERDALE TAXI WAS DRAWN BY A DONKEY AND DRIVEN BY AN INDIAN

IN 1906 REED BRYAN BUILT THE FIRST EVERGLADE DRAINAGE DREDGES ON SOUTH SIDE OF NEW RIVER

THREE GREAT AMERICANS LIVED ON THE HOUSEBOAT WANDERER AND FISHED IN NEW RIVER FT. LAUDERDALE, FLA IN 1897



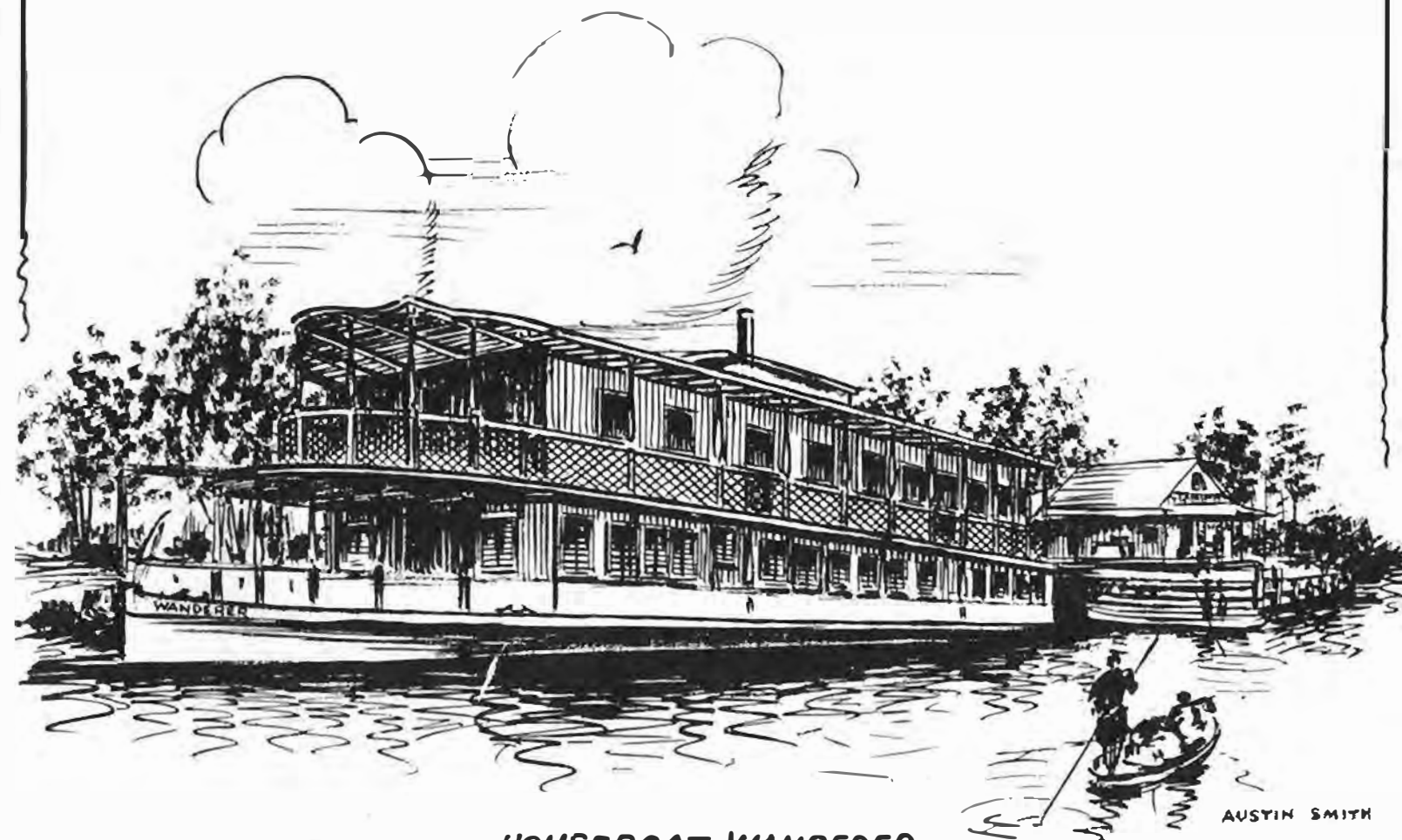
GEORGE DEWEY
ADMIRAL
UNITED STATES NAVY
HERO OF MANILA BAY



JOSEPH JEFFERSON
ACTOR
THE FAMOUS RIP VAN WINKLE
OF THE THEATRE

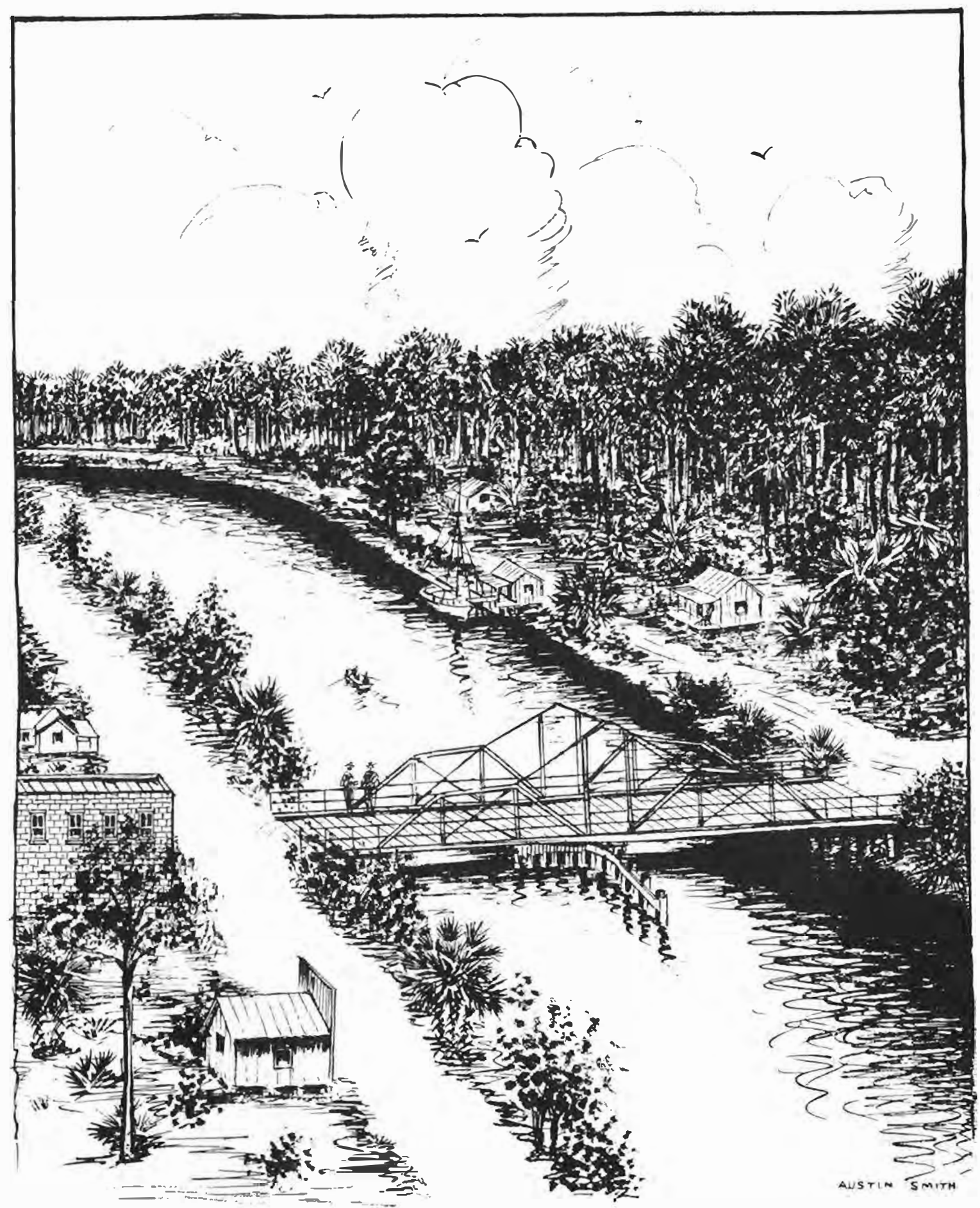
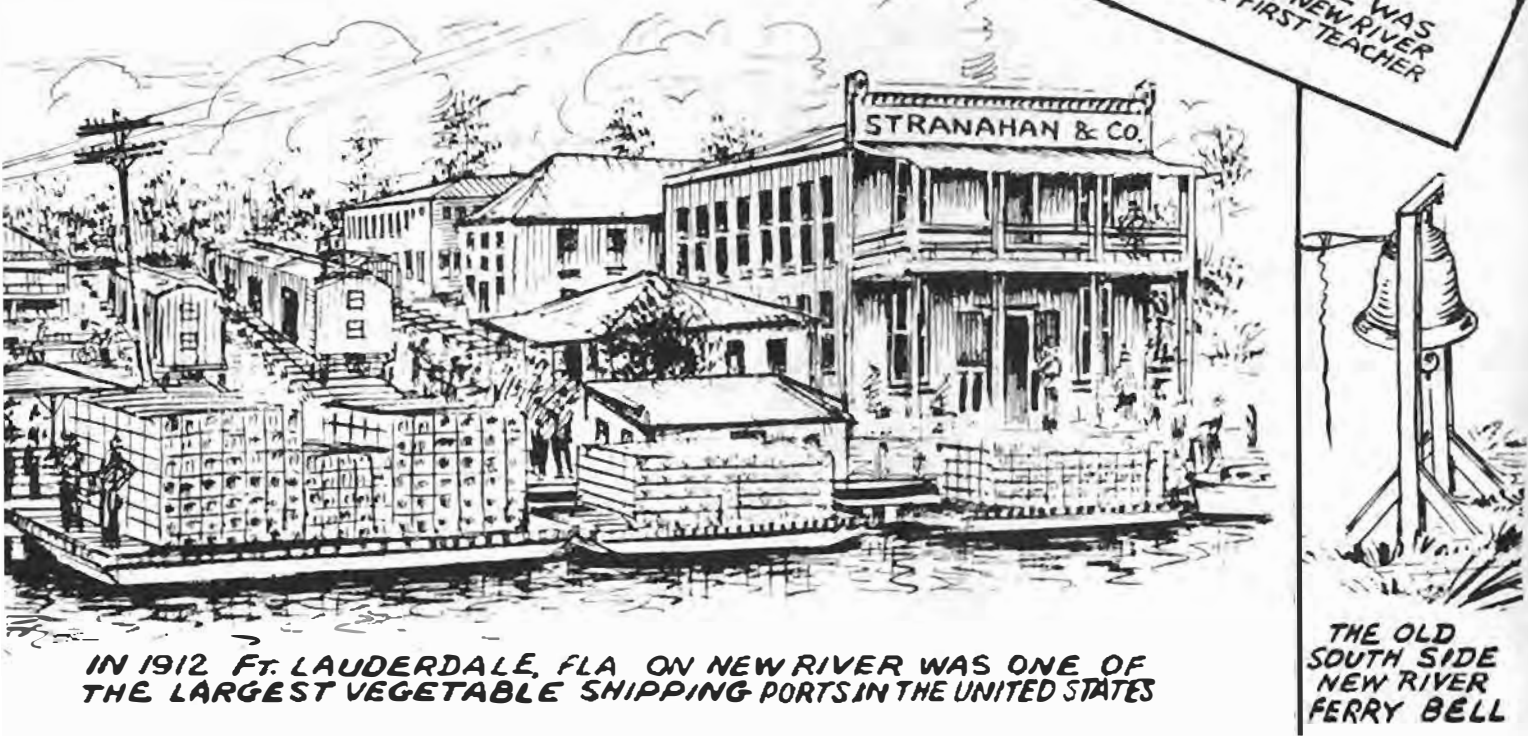
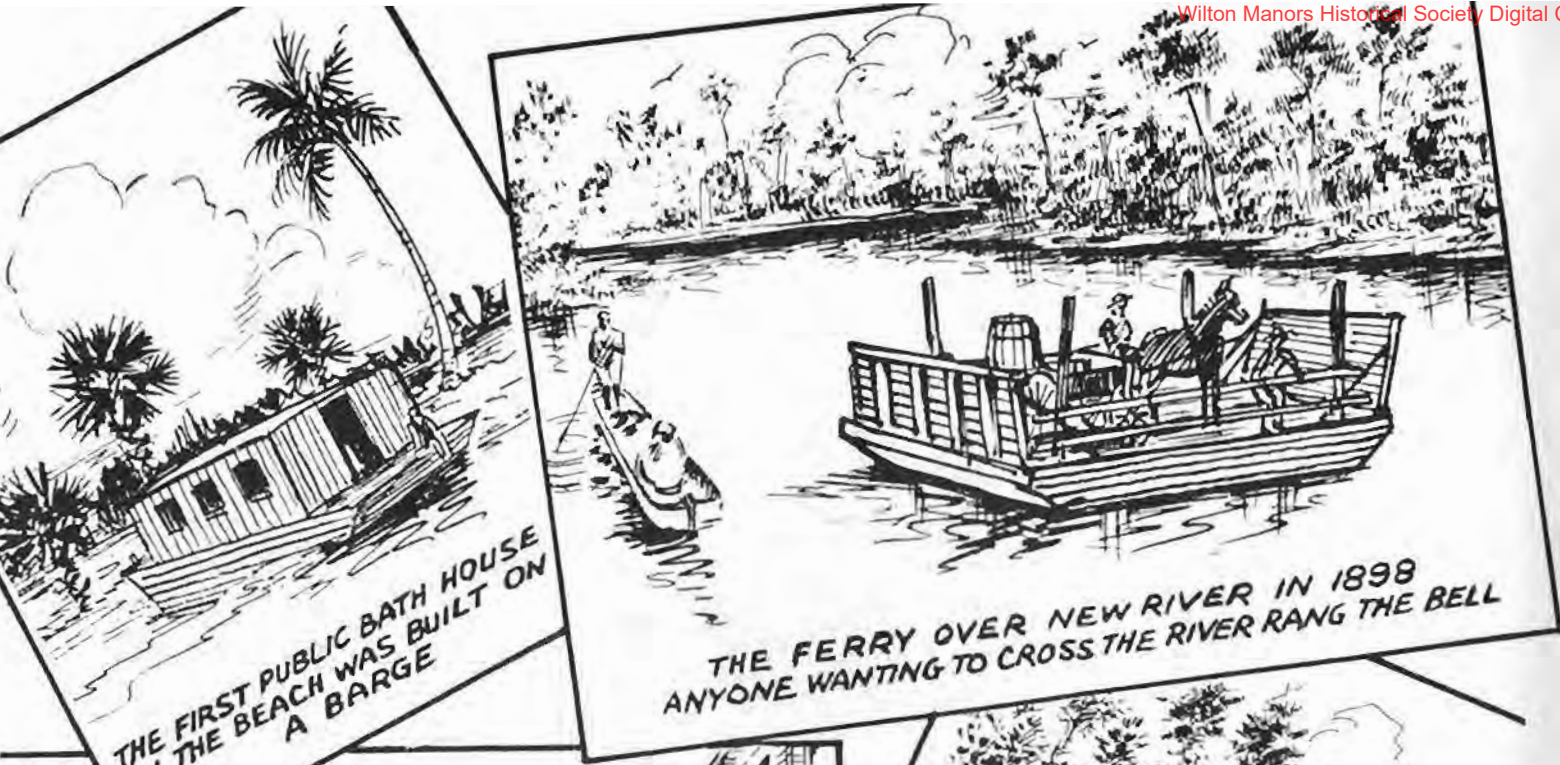


GROVER CLEVELAND
PRESIDENT
OF UNITED STATES
AND GOVERNOR OF NEW YORK



AUSTIN SMITH

HOUSEBOAT WANDERER
THIS BOAT WAS OWNED BY C. B. COREY. IT WAS TAKEN CARE OF BY FRANK STRANAHAN AND WAS DOCKED IN NEW RIVER FT. LAUDERDALE, FLA WEST OF STRANAHAN'S TRADING POST



NEW RIVER AND ANDREWS AVE BRIDGE FT. LAUDERDALE, FLORIDA 1910



A BIRD'S EYE VIEW OF FT. LAUDERDALE, FLA. IN 1910



THE FIRST METHODIST CHURCH WAS BUILT ON ANDREWS AVE SOUTH OF NEW RIVER.

THE FIRST TOURIST CAMP ON THE SOUTH SIDE OF NEW RIVER AND ANDREWS AVE.



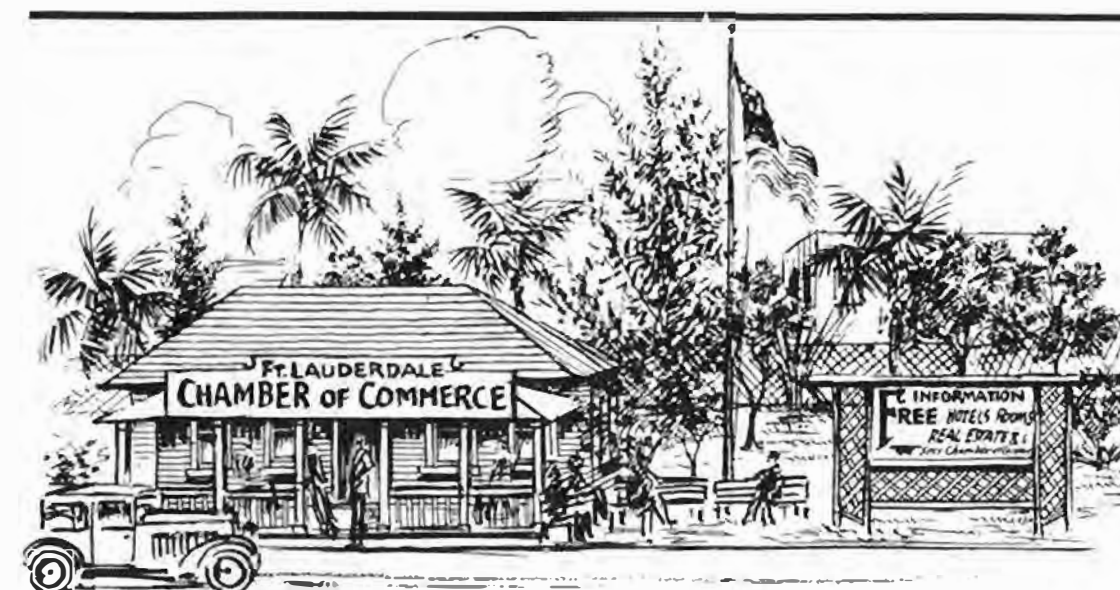
A SEMINOLE INDIAN "SHIRT TAIL CHARLIE" A CHARACTER OF EARLY FT. LAUDERDALE



IN 1903 FRANK STRANAHAN BUILT HIS NEW HOUSE ON THE NORTH BANK OF NEW RIVER



THE FIRST FIRE EQUIPMENT



THE FIRST CHAMBER OF COMMERCE ON ANDREWS AVE NORTH OF NEW RIVER WHERE THE SWEET BUILDING NOW STANDS



CAPT A.J. GARTON FIRST DOCK MASTER ON NEW RIVER



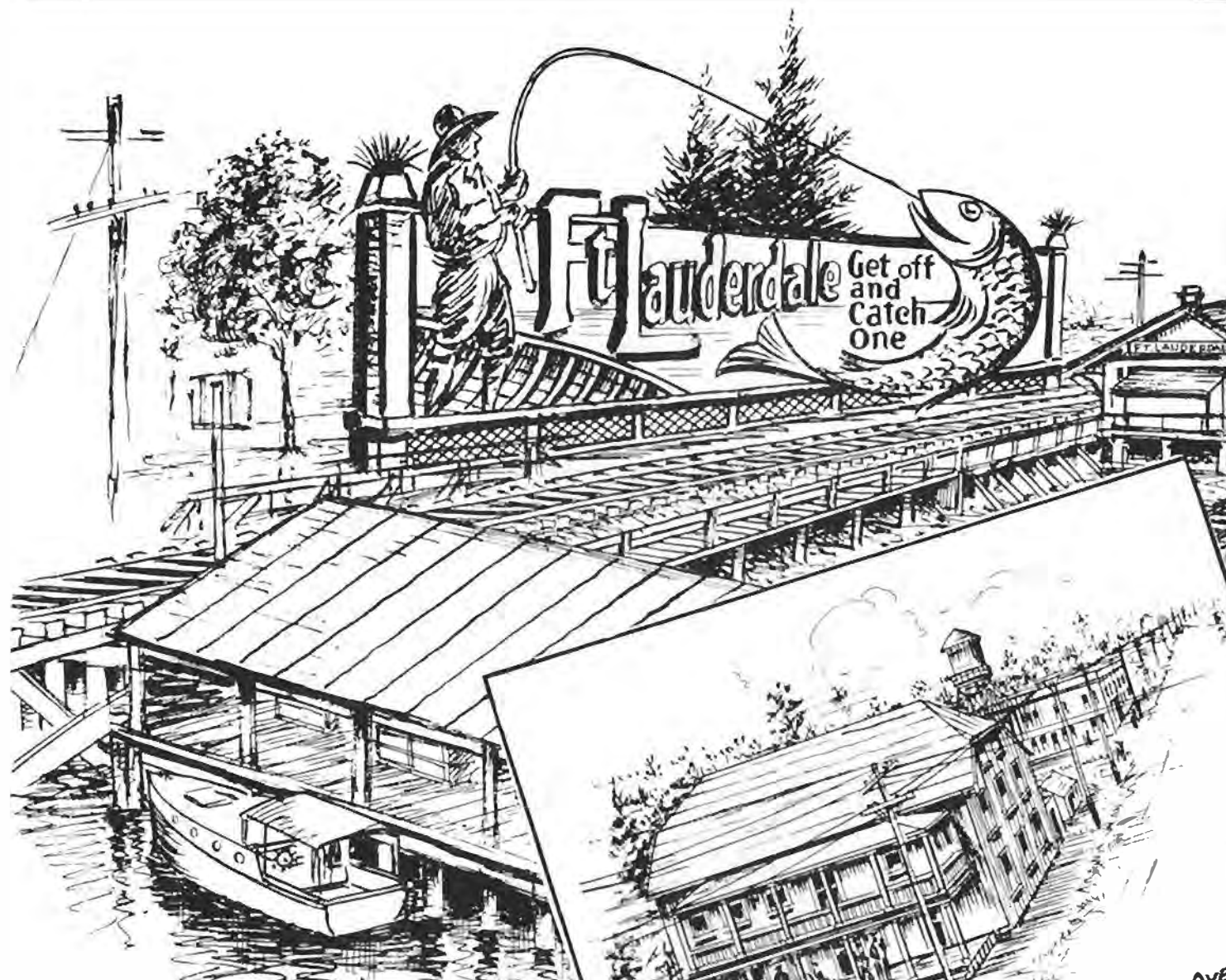
THE FIRST BAND STAND ON THE NORTH BANK OF NEW RIVER AND ANDREWS AVE BRIDGE



THE FIRST NEWSPAPER, THE SENTINEL, WAS PUBLISHED IN 1911 BY COL. GEO. C. MATTHEWS IN THIS BUILDING ON ANDREWS AVE NORTH OF NEW RIVER



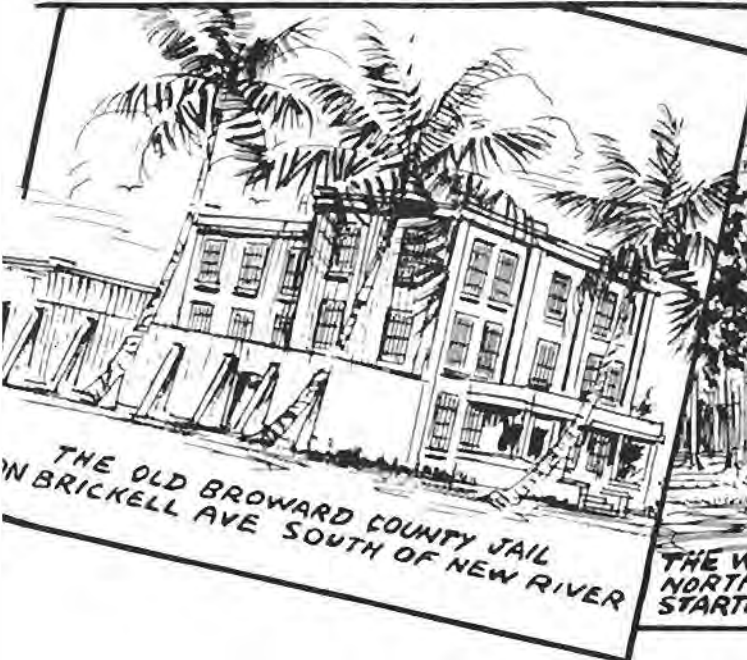
IN 1922 PARKS' AUTO STORE SOLD GROCERIES FROM DOOR TO DOOR



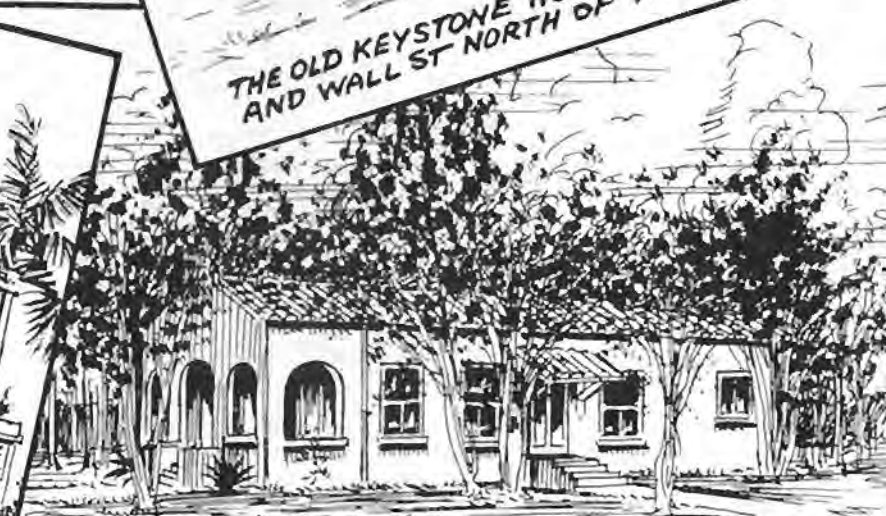
THE GREAT FISH SIGN AT THE FLORIDA EAST COAST R. R. STATION AND NEW RIVER DESIGNED AND PAINTED BY COM. A. H. BROOK



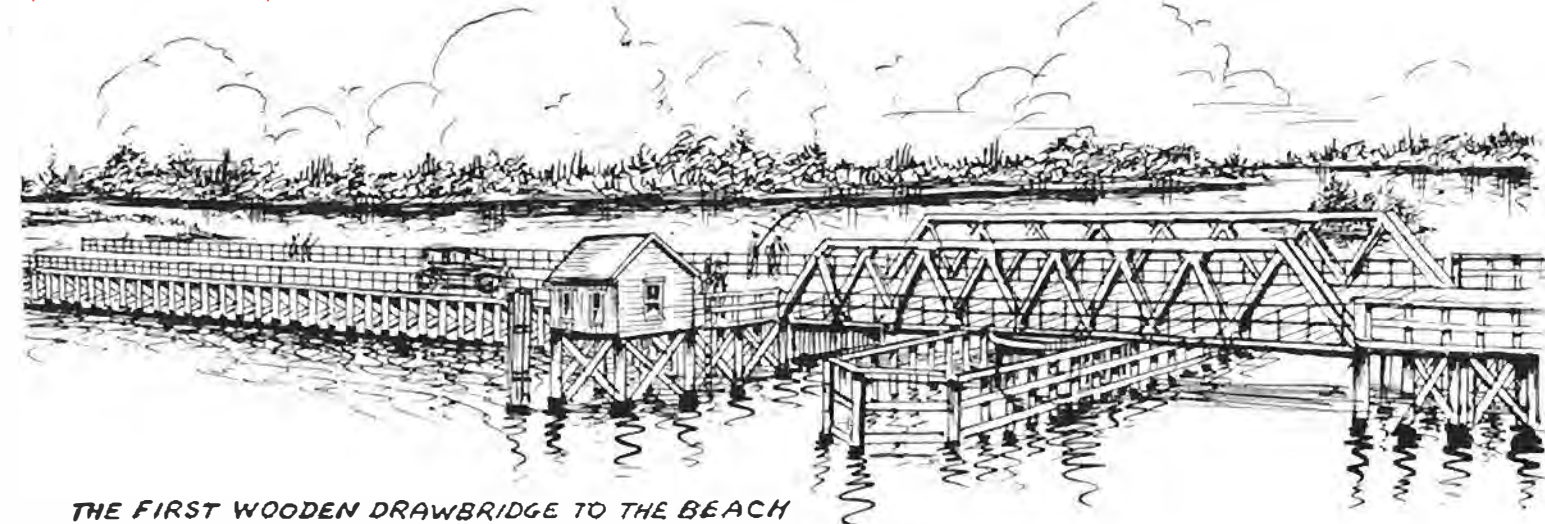
THE OLD KEYSTONE HOTEL ON ANDREWS AVE. AND WALL ST NORTH OF NEW RIVER



THE OLD BROWARD COUNTY JAIL IN BRICKELL AVE SOUTH OF NEW RIVER



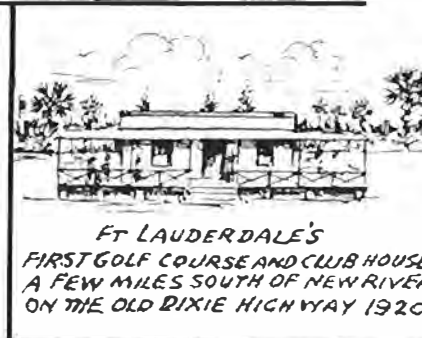
THE WOMAN'S CLUB IN STRANAHAN PARK ON ANDREWS AVE NORTH OF NEW RIVER THE FIRST PUBLIC LIBRARY WAS STARTED HERE MRS. LOUISE RICHARDSON WAS THE FIRST LIBRARIAN



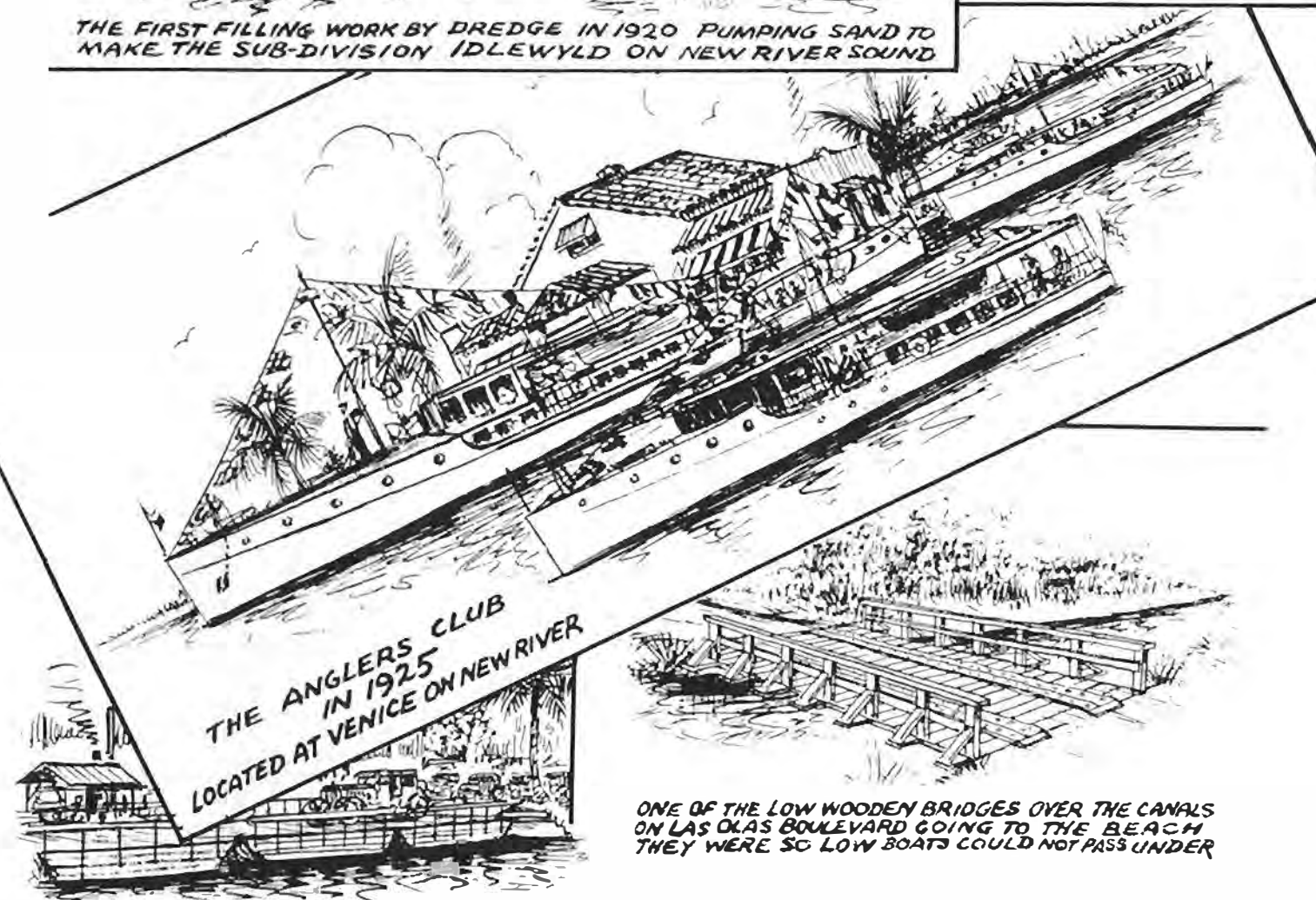
THE FIRST WOODEN DRAWBRIDGE TO THE BEACH WHERE THE CAUSEWAY NOW IS



THE FIRST FILLING WORK BY DREDGE IN 1920 PUMPING SAND TO MAKE THE SUB-DIVISION IDLEWYLD ON NEW RIVER SOUND



FT LAUDERDALE'S FIRST GOLF COURSE AND CLUB HOUSE A FEW MILES SOUTH OF NEW RIVER ON THE OLD DIXIE HIGHWAY 1920

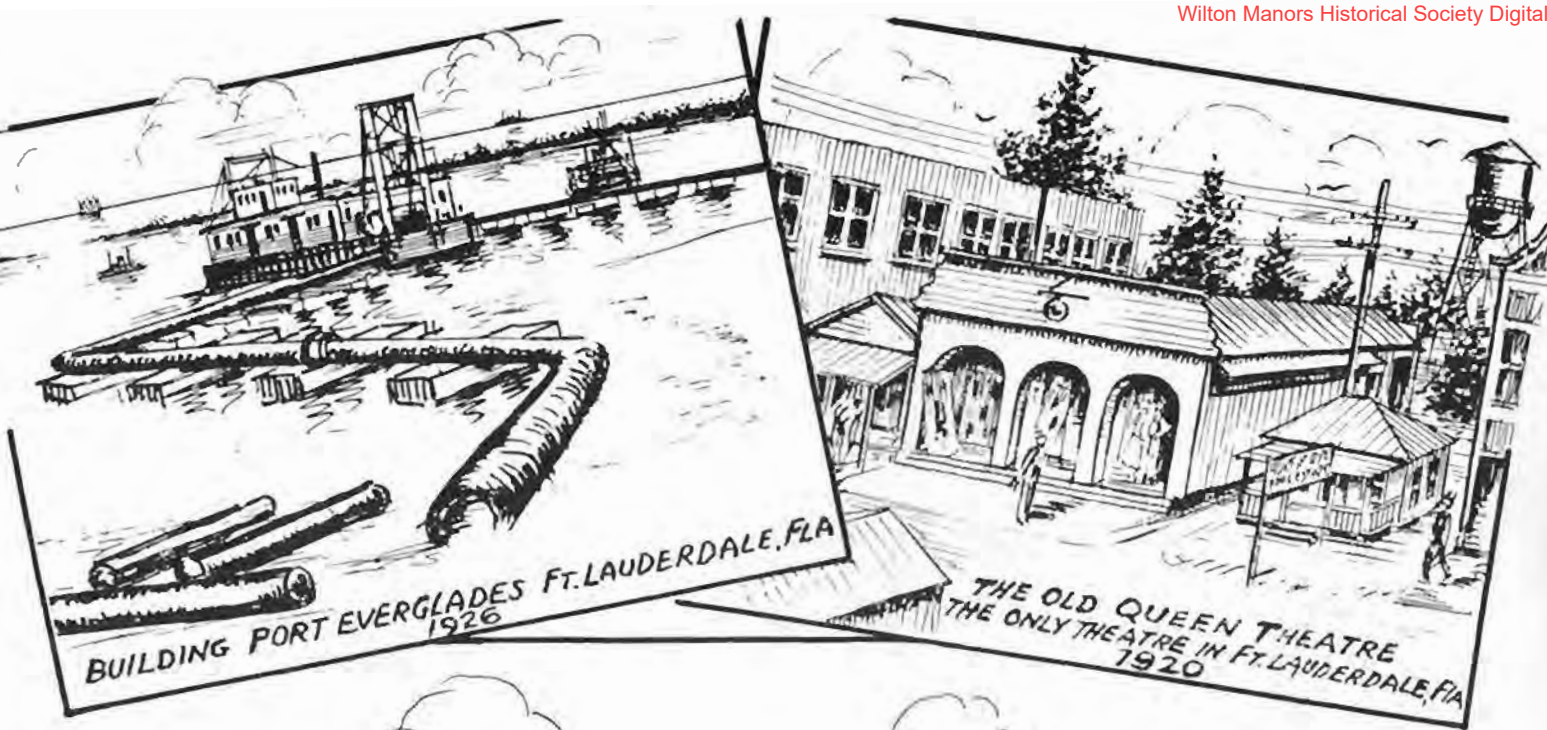


THE ANGLERS CLUB IN 1925 LOCATED AT VENICE ON NEW RIVER



ONE OF THE LOW WOODEN BRIDGES OVER THE CANALS ON LAS OLAS BOULEVARD GOING TO THE BEACH THEY WERE SO LOW BOATS COULD NOT PASS UNDER

1925 BOOM-TIME PONTON BRIDGE ACROSS NEW RIVER TO RELIEVE THE TRAFFIC ON ANDREWS AVENUE BRIDGE

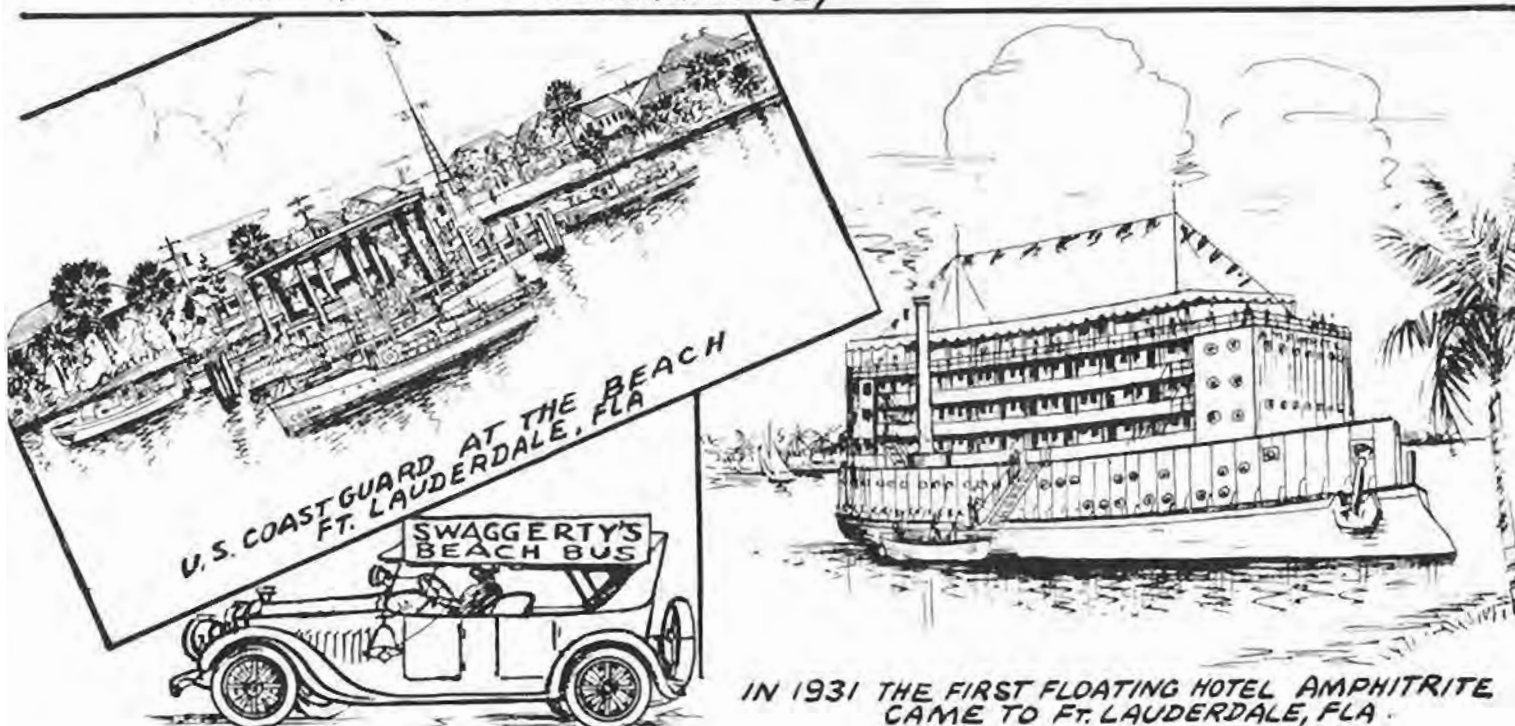


BUILDING PORT EVERGLADES FT. LAUDERDALE, FLA 1926

THE OLD QUEEN THEATRE
THE ONLY THEATRE IN FT. LAUDERDALE, FLA 1920



THE FIRST TAKE-OFF AND LANDING AIRPORT ON LAS OLAS BOULEVARD GOING TO THE BEACH IN 1927

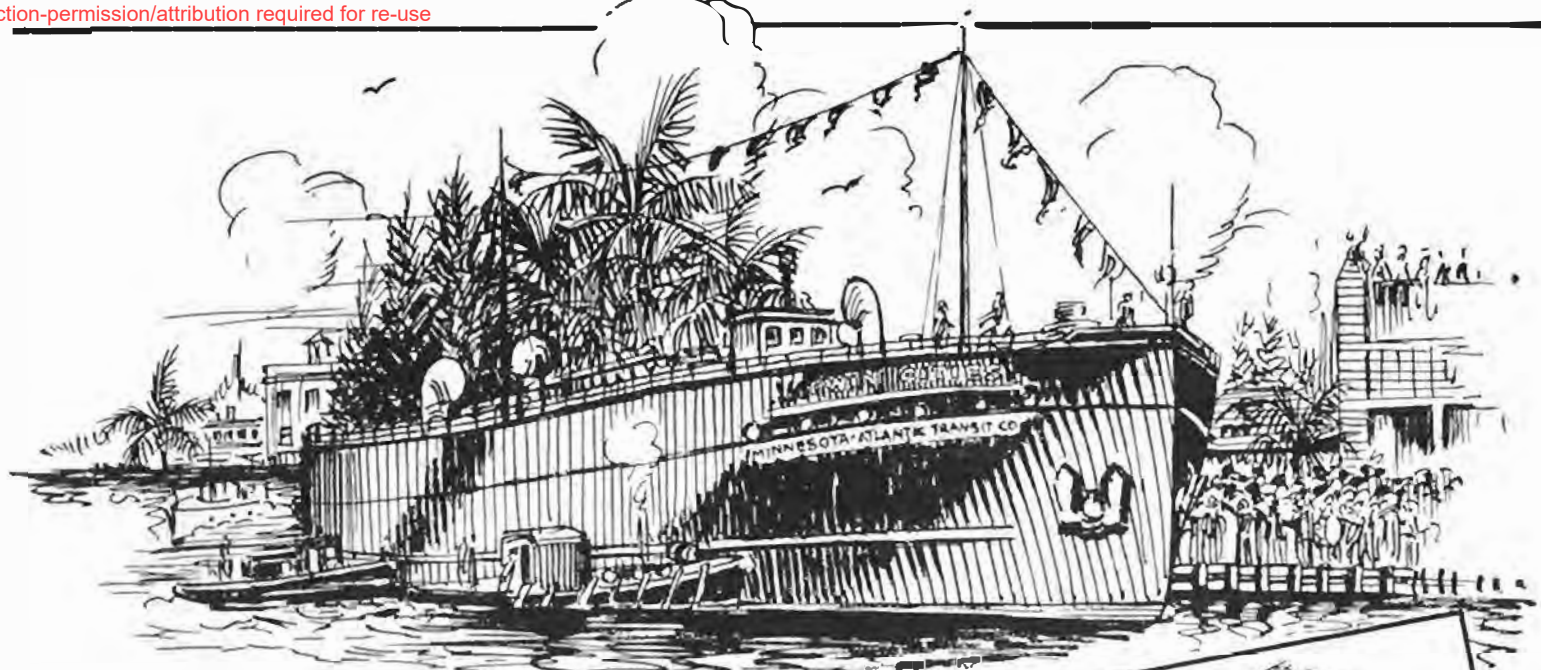


U.S. COAST GUARD AT THE BEACH
FT. LAUDERDALE, FLA

SWAGGERTY'S
BEACH BUS

IN 1931 THE FIRST FLOATING HOTEL AMPHITRITE
CAME TO FT. LAUDERDALE, FLA

THE FIRST TRANSPORTATION TO THE BEACH



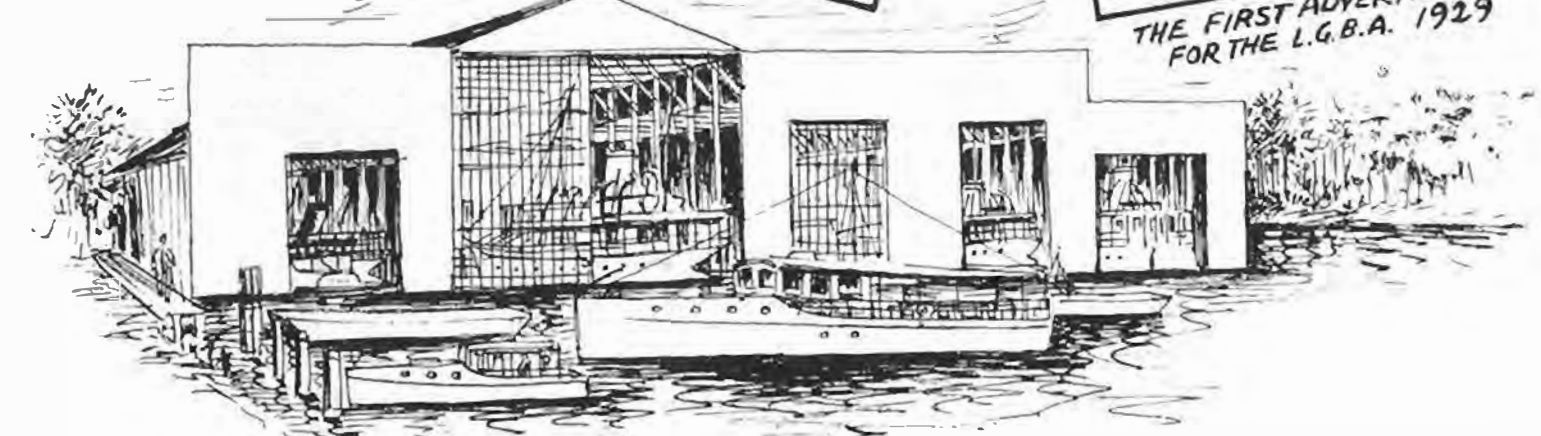
THE FIRST LARGE FREIGHT STEAMSHIP TWIN CITIES TO DOCK
AT NEW RIVER AND ANDREWS AVE BRIDGE IN 1925



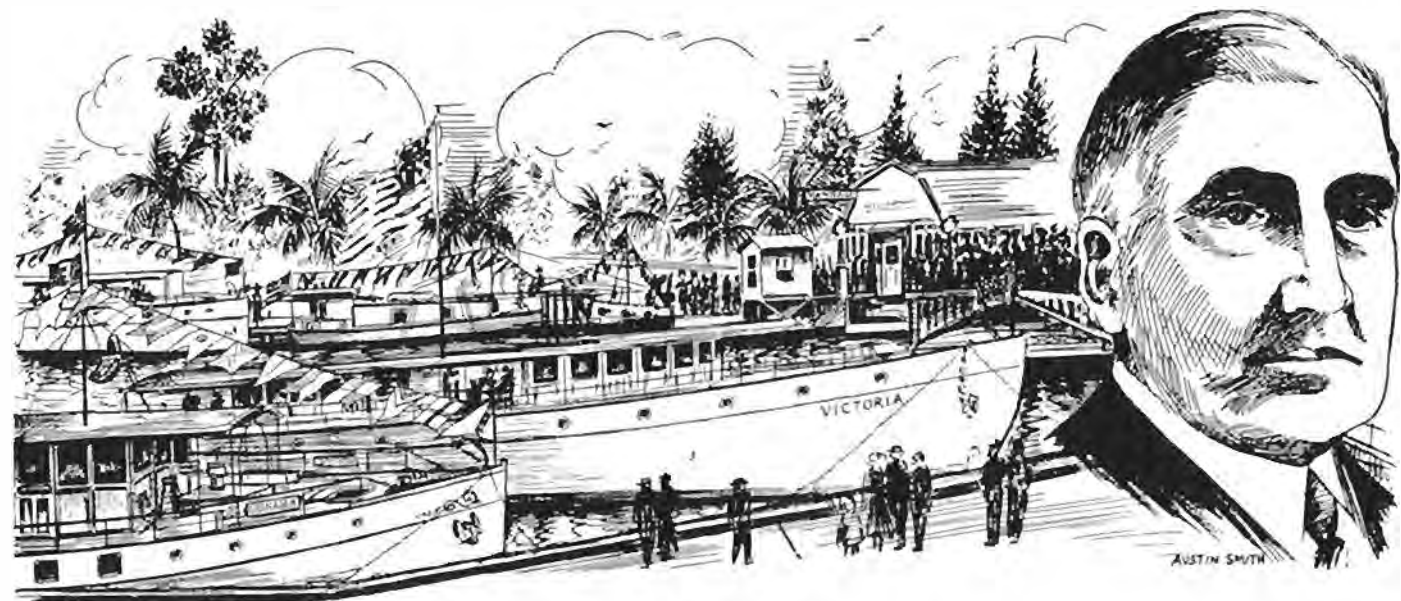
CAPT FORBES IN 1922 MADE ROUND TRIPS THRO THE
INLAND WATERWAY FROM FT. LAUDERDALE TO FT. MYERS, FLA

Over Two Hundred varieties
of Game Fish live in the
Gulf Stream, Coral Reef
and inland tide waters
round about Ft. Lauderdale,
Fla. SAILFISH, TARPON, TUNA,
MARLIN, SHARK, WAHOO, BARRICUDA,
AMBER JACK and KINGFISH are
caught within twenty minutes of
the town hall. Sport and fair treatment
insured by twenty Captains
of the
Lauderdale Guide-Boat Association
and their fleet of
completely equipped Cruisers.

THE FIRST ADVERTISEMENT
FOR THE L.G.B.A. 1929



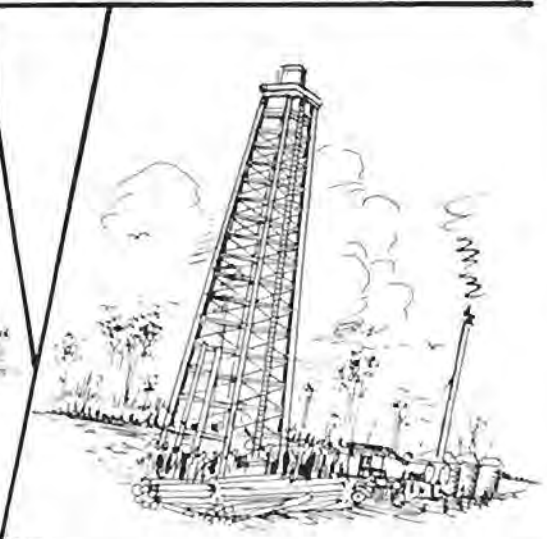
THE FIRST COVERED STORAGE YACHT BASIN ON NEW RIVER 1923 OWNED BY CAPT GEO J. PILKINGTON



IN 1921 PRESIDENT-ELECT HARDING VISITED FT. LAUDERDALE, FLA ON SENATOR FRELINGHUYSEN'S YACHT VICTORIA WHICH DOCKED ON NEW RIVER AND ANDREWS AVE BRIDGE



BRINER'S BEAUTIFUL RAINBOW COLORED ELECTRIC FOUNTAIN ON NEW RIVER



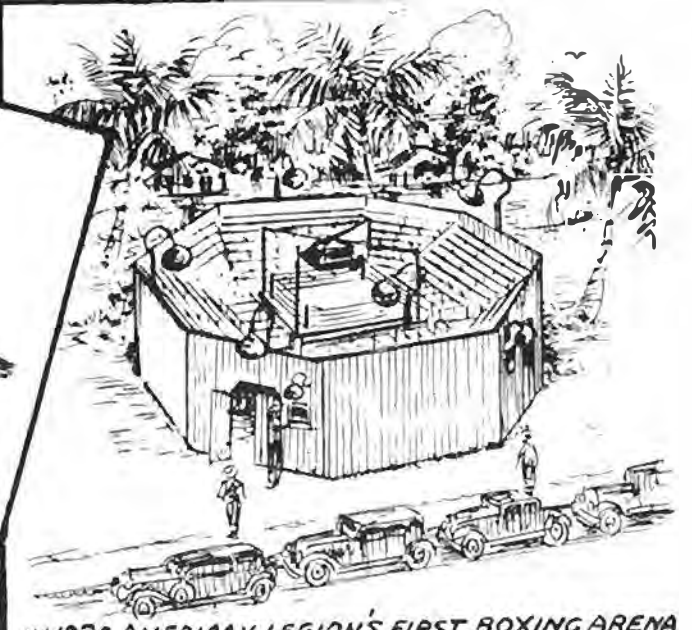
THE FIRST OIL WELL IN FT. LAUDERDALE, FLA 1929



THE SHRINERS PRIZE WINNING FLOAT AT THE ANNUAL REVELRY ON NEW RIVER, MARCH 4, 1931.



IN 1919 CAPT FREEMAN'S YACHT KATHLEEN MADE REGULAR TRIPS TO THE BEACH ON NEW RIVER FROM ANDREWS AVE BRIDGE



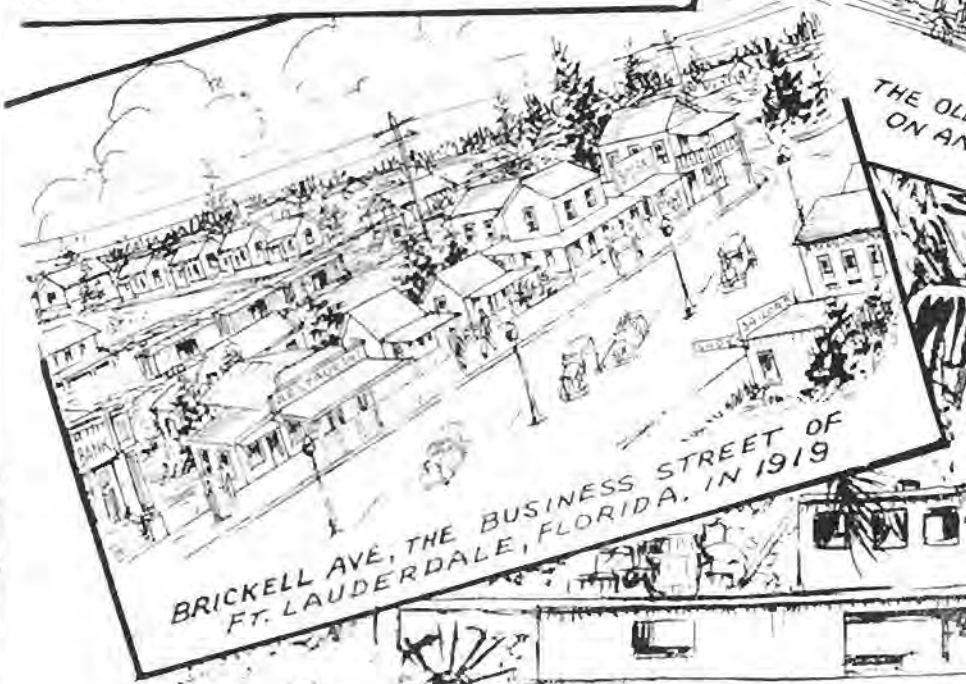
IN 1930 AMERICAN LEGION'S FIRST BOXING ARENA ON BROWARD BOULEVARD NORTH OF NEW RIVER



THE FIRST TRAILER CAMP RIGHT IN THE CITY ON THE NORTH BANK OF NEW RIVER AND LAS OLAS BLVD 1933



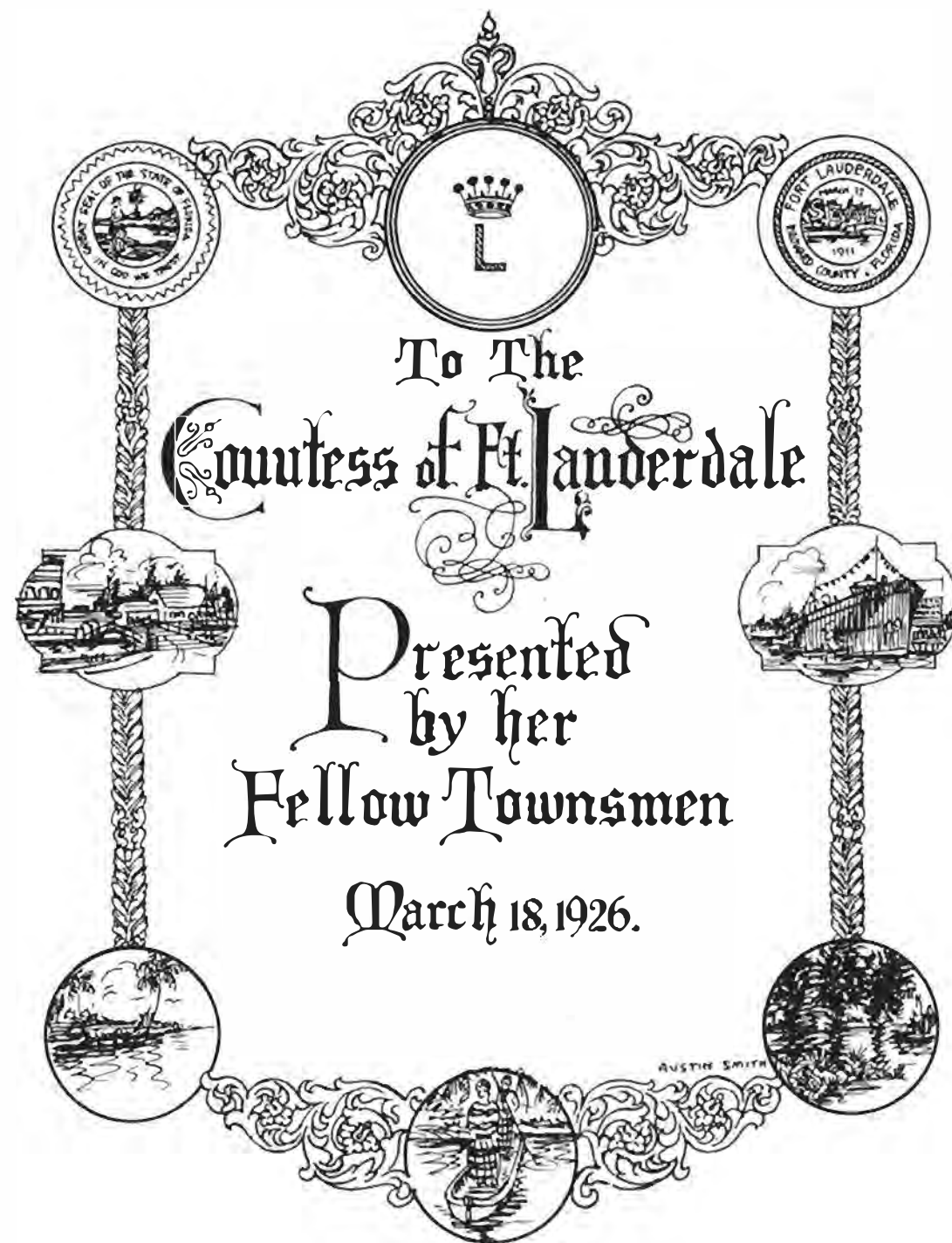
THE OLD BROWARD COUNTY COURT HOUSE ON ANDREWS AVE SOUTH OF NEW RIVER



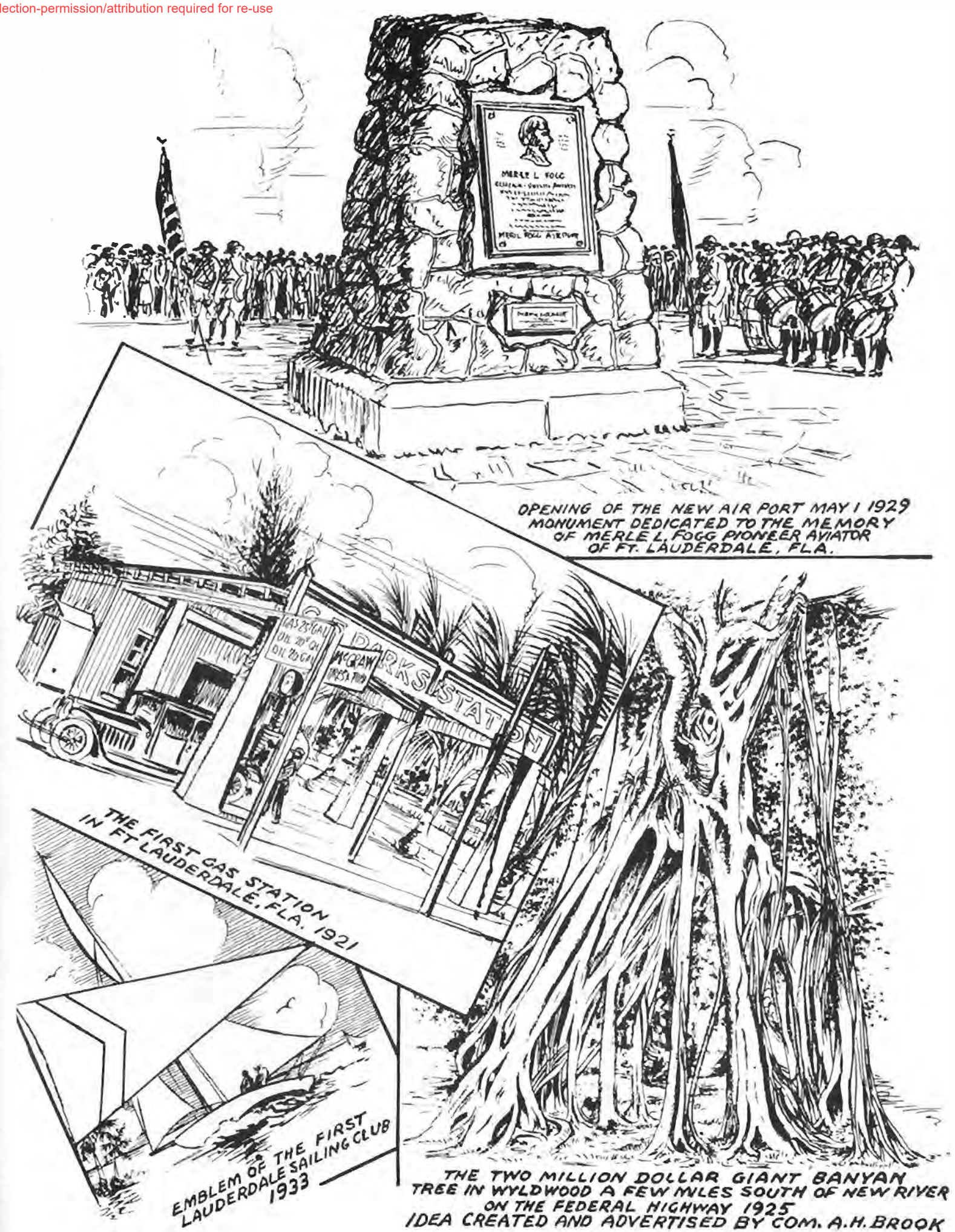
BRICKELL AVE, THE BUSINESS STREET OF FT. LAUDERDALE, FLORIDA, IN 1919



CAPT ZIEGLER'S OLD PADDLE-WHEEL RIVER BOAT LIBERTY MADE ROUND TRIPS BETWEEN FT. LAUDERDALE AND MIAMI CARRYING PASSENGERS AND FREIGHT

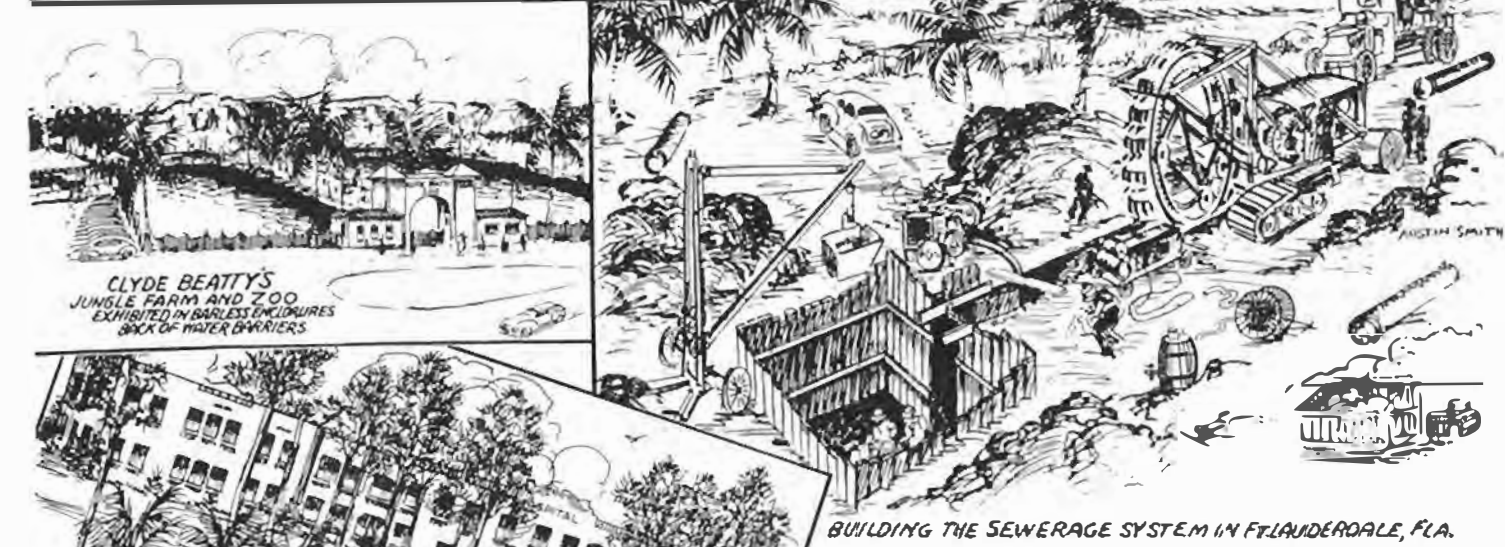


CARD OF GREETING PRESENTED TO THE COUNTESS OF FT. LAUDERDALE
WHEN SHE VISITED FT. LAUDERDALE, FLA IN 1926





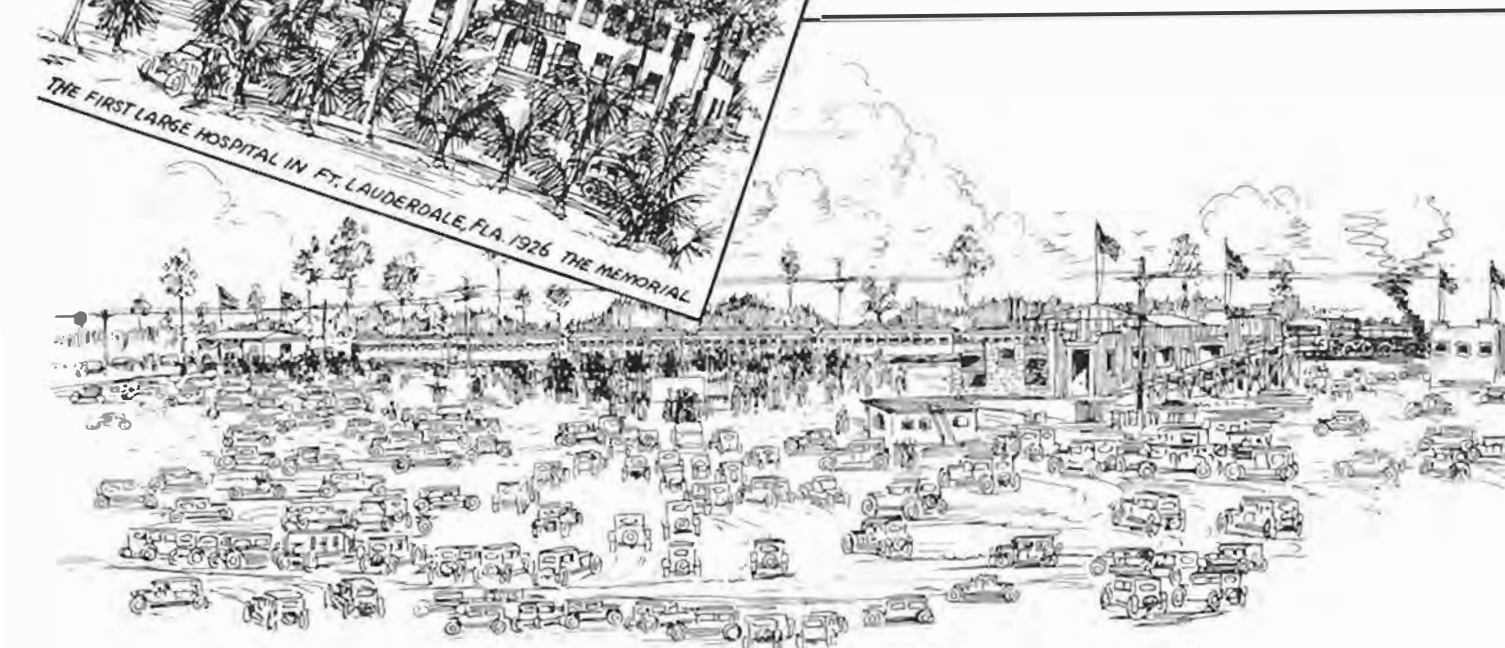
THE FIRST SHUFFLE-BOARD COURT IN STRANAHAN PARK
FT. LAUDERDALE, FLA. 1928



CLYDE BEATTY'S
JUNGLE FARM AND ZOO
EXHIBITED IN BARLESS ENCLOSURES
BACK OF WATER BARRIERS



BUILDING THE SEWERAGE SYSTEM IN FT. LAUDERDALE, FLA.



THE FIRST LARGE HOSPITAL IN FT. LAUDERDALE, FLA. 1926 THE MEMORIAL



FT. LAUDERDALE WELCOMES THE ARRIVAL OF THE FIRST TRAIN OF
THE SEABOARD RAILROAD IN 1927-STATION UNDER CONSTRUCTION AT RIGHT



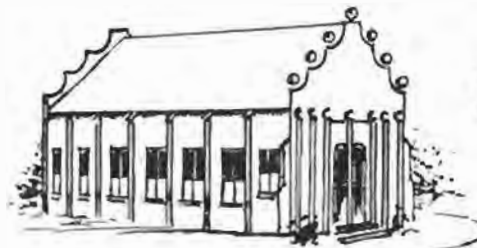
FIRST LUTHERAN CHURCH



FIRST BAPTIST CHURCH



FIRST METHODIST CHURCH



SEVENTH DAY ADVENTIST



THE CHURCH OF GOD



SPIRITUALIST TEMPLE OF TRUTH
WOMAN'S BLDG



TRINITY LUTHERAN



CATHOLIC CHURCH



CHURCH OF CHRIST



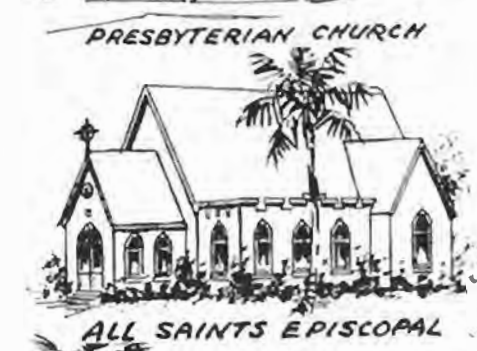
PRESBYTERIAN CHURCH



CHRISTIAN CHURCH



PARK TEMPLE METHODIST CHURCH



ALL SAINTS EPISCOPAL



PROGRESSO METHODIST



CHURCH OF THE NAZARENE



FIRST CHURCH OF CHRIST SCIENTIST



THE SALVATION ARMY



CHURCH OF JESUS CHRIST OF LATTER DAY SAINTS

FT. LAUDERDALE THE CITY OF CHURCHES



LAUDERDALE POOL

This Tablet Erected To Honor

KATHERINE RAWLS

Ft. Lauderdale, Florida

WORLD'S CHAMPION

and

Greatest Woman Swimmer

Of Her Time

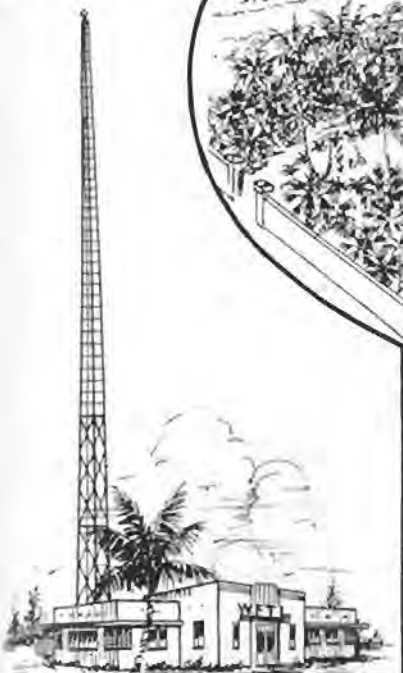
1935

AUSTIN SMITH

THE DRAWING OF THE COMMEMORATIVE BRONZE PLAQUE PRESENTED
TO KATHERINE RAWLS BY VICE-MAYOR JOEL M. TAUL
APRIL 21, 1935



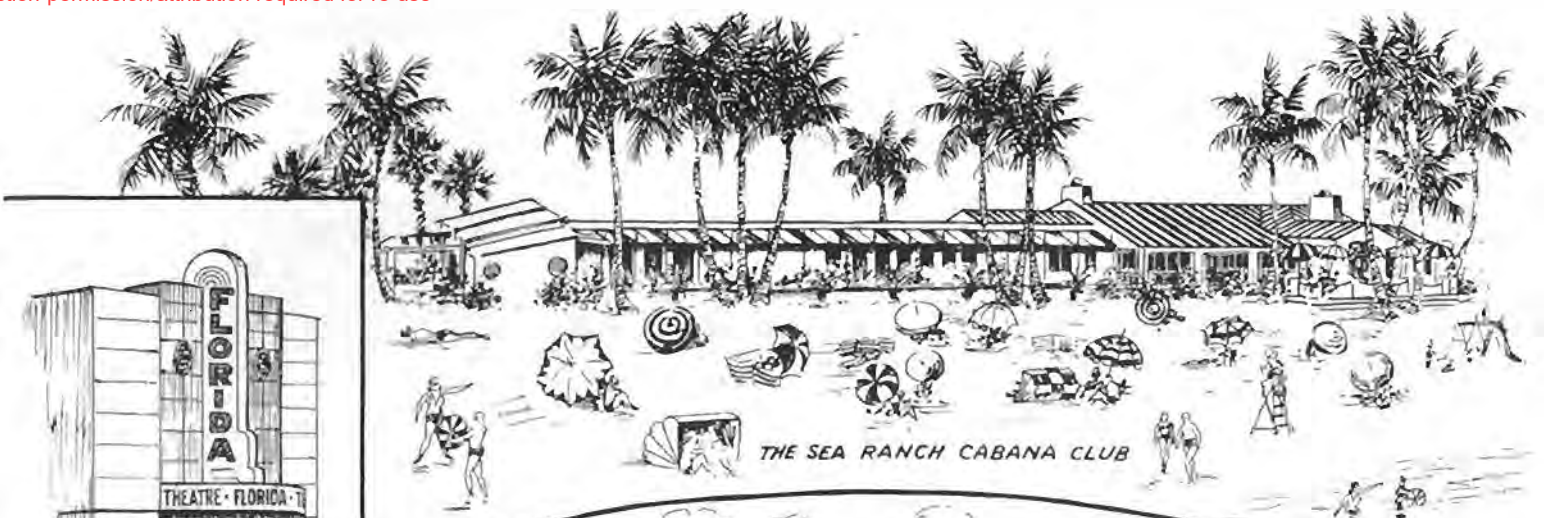
ONE OF FT. LAUDERDALE'S
MANY THEATRES
OPERATED BY
E.J. SPARKS CIRCUIT
MAN. BY A.R. NININGER



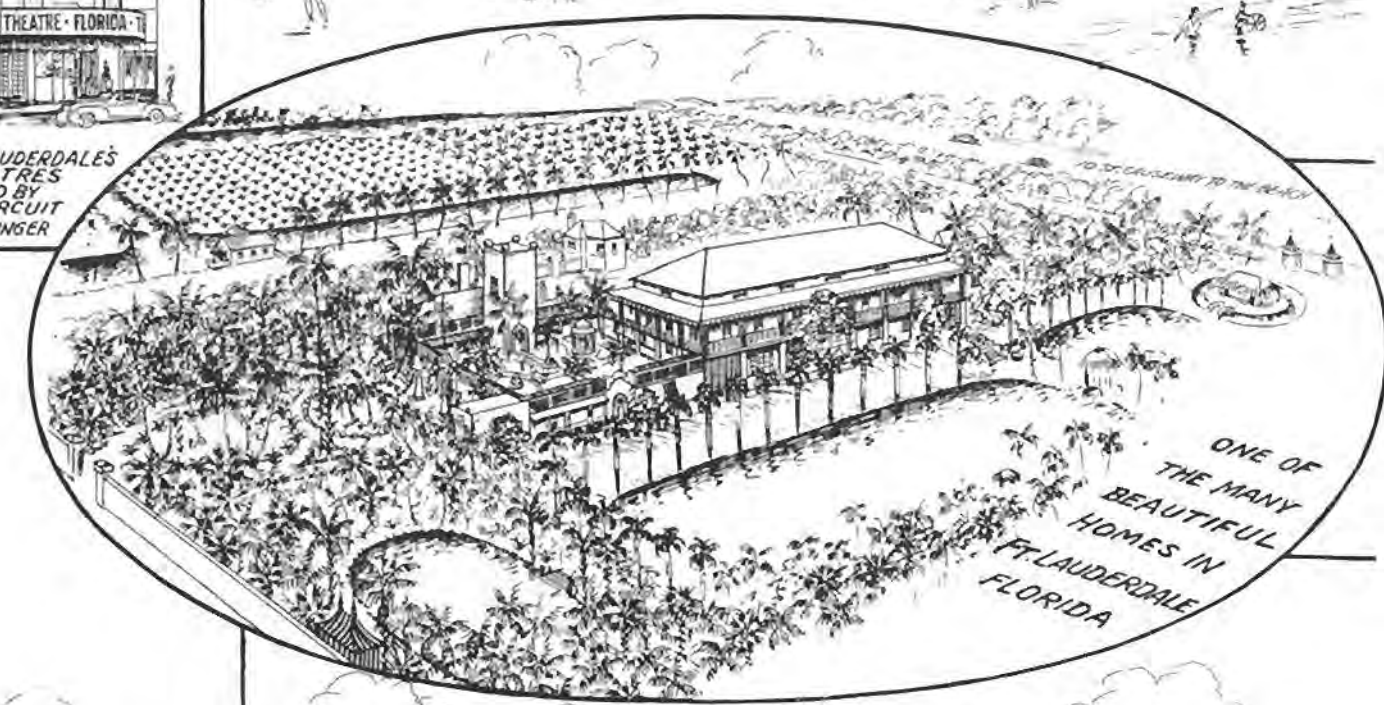
FT. LAUDERDALE'S
FIRST BROADCASTING STATION
W.F.T.L.
OWNED AND OPERATED BY TOM M. BRYAN



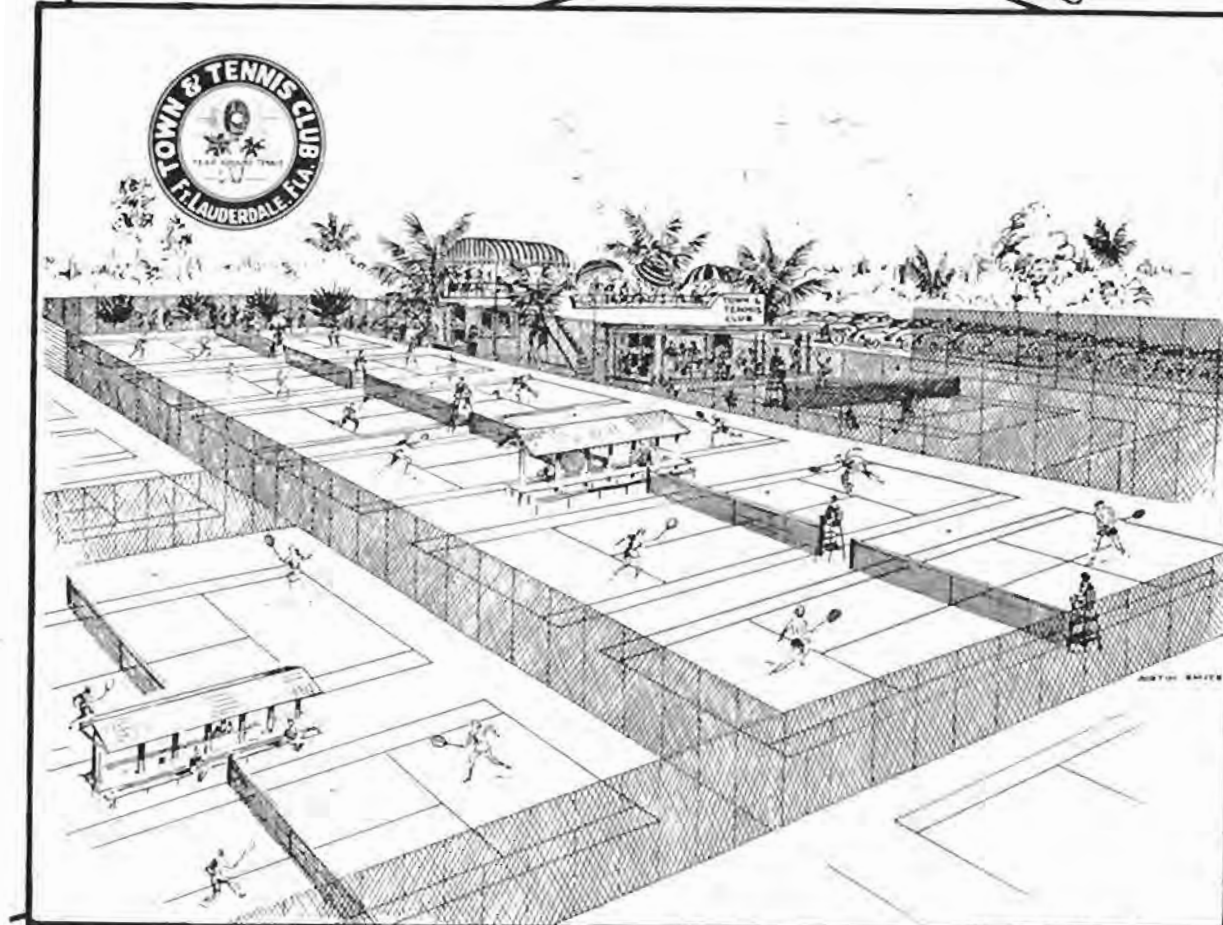
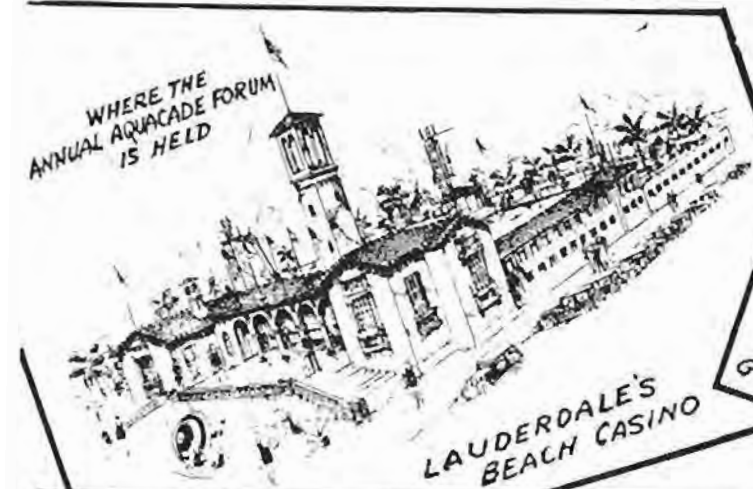
LAUDERDALE YACHT CLUB



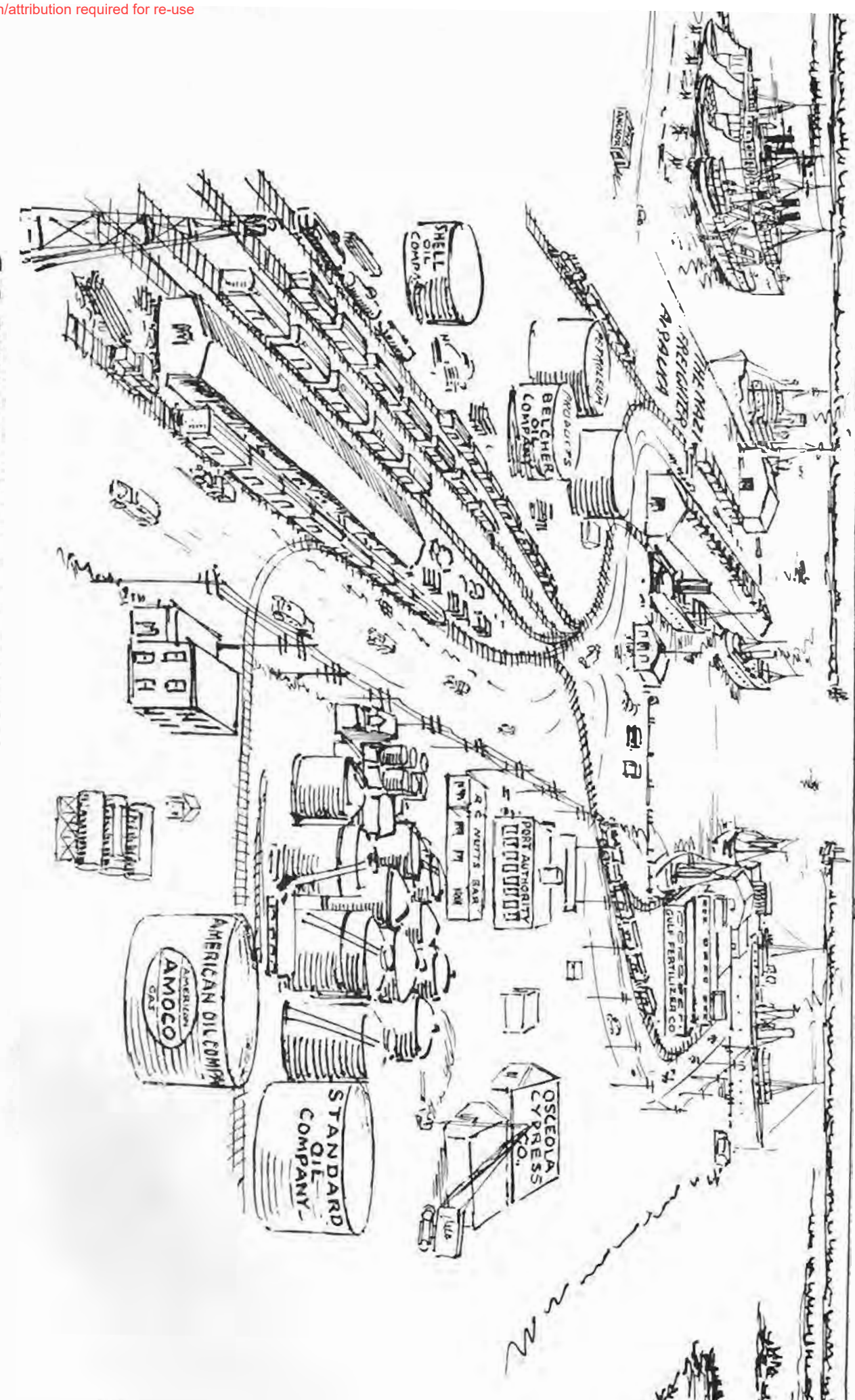
THE SEA RANCH CABANA CLUB



ONE OF
THE MANY
BEAUTIFUL
HOMES IN
FT. LAUDERDALE
FLORIDA

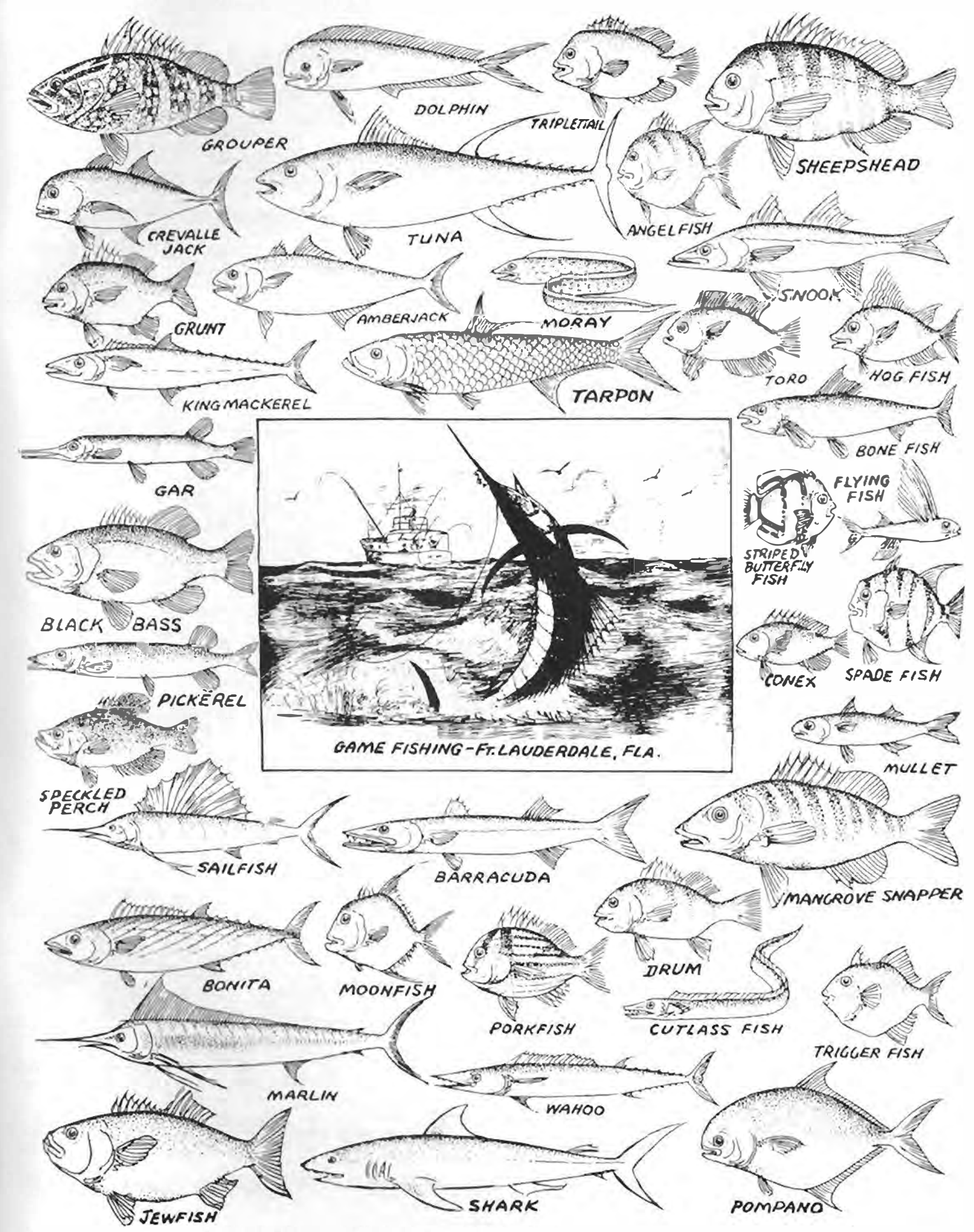


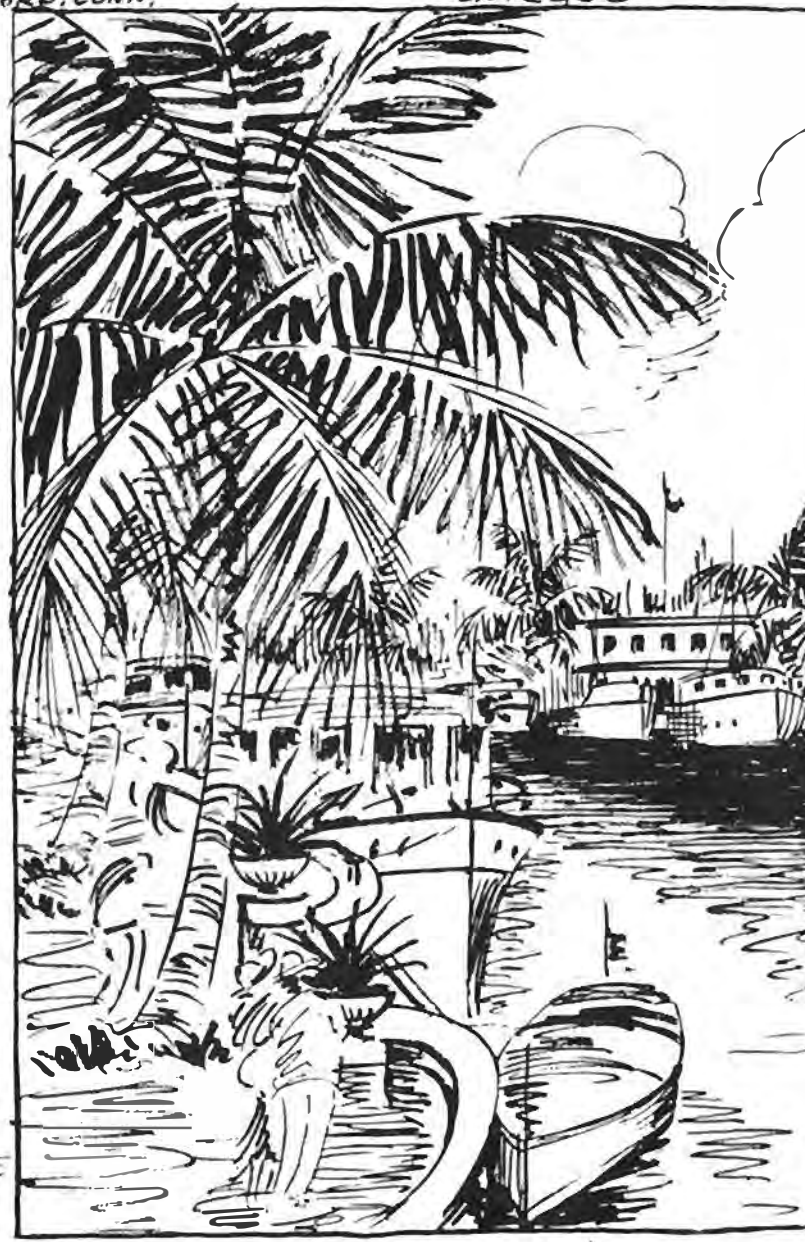
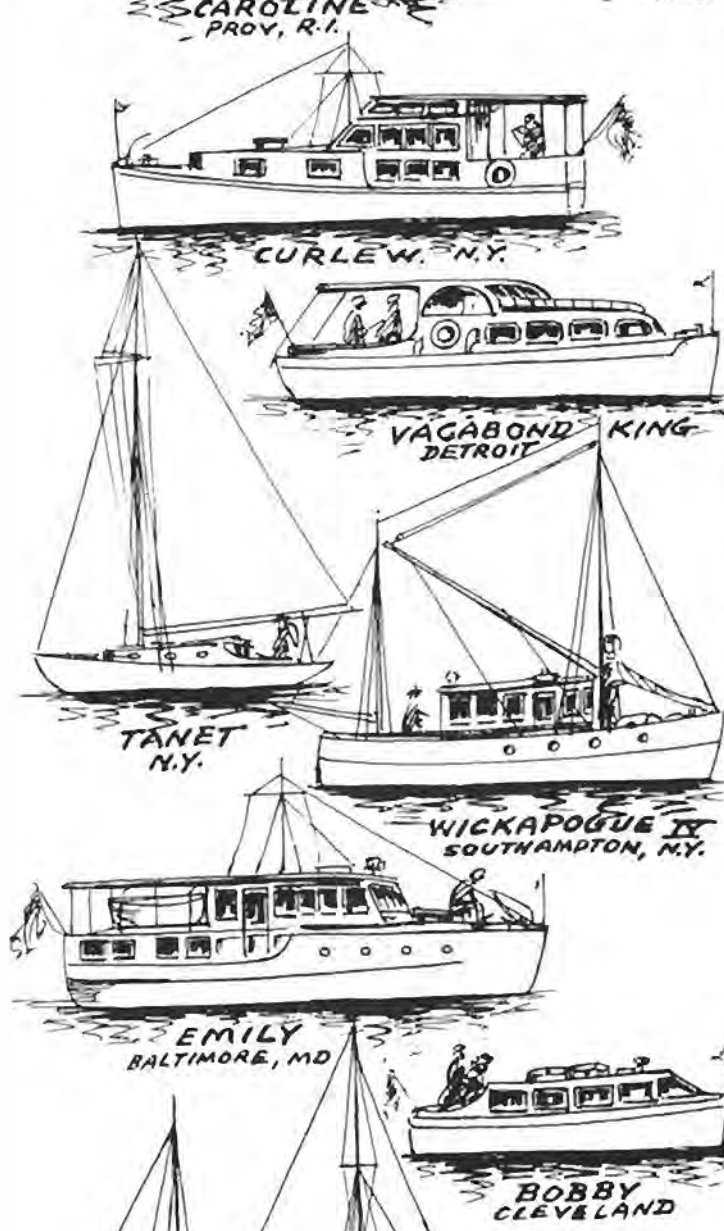
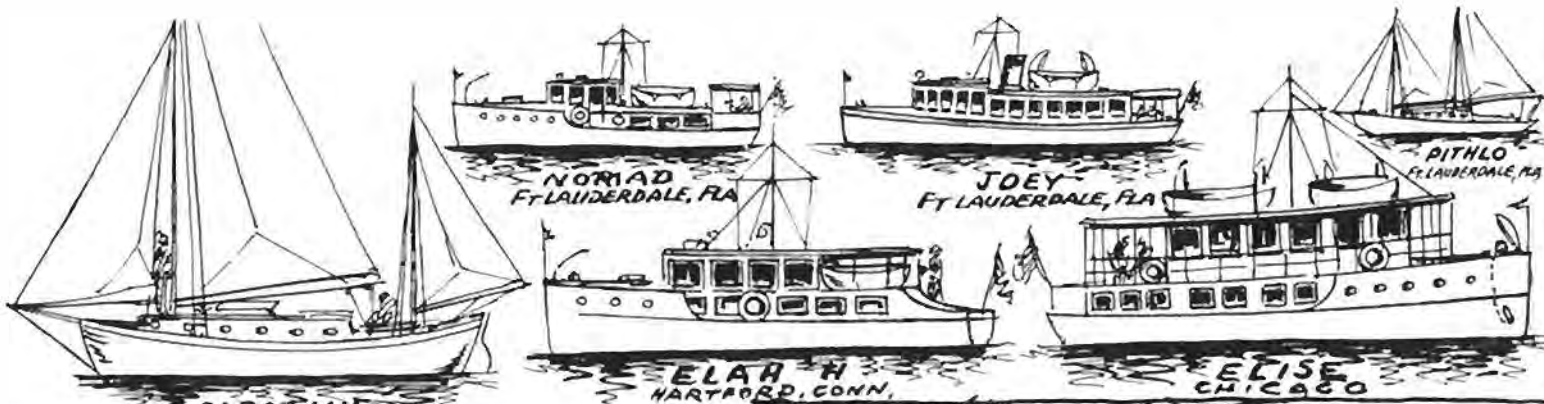
THE BUSY AND GROWING PORT EVERGLADES, FT. LAUDERDALE, FLA.



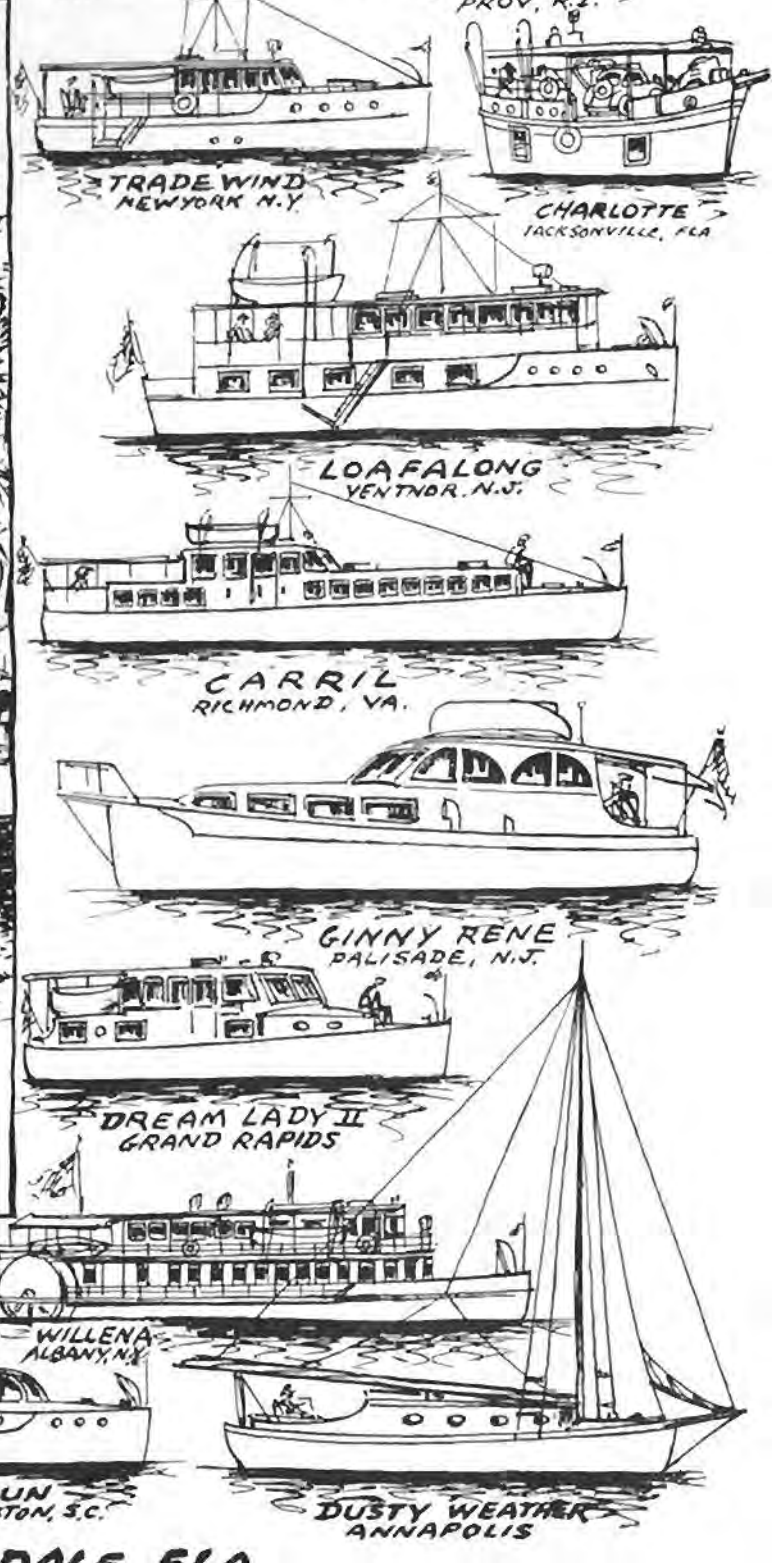
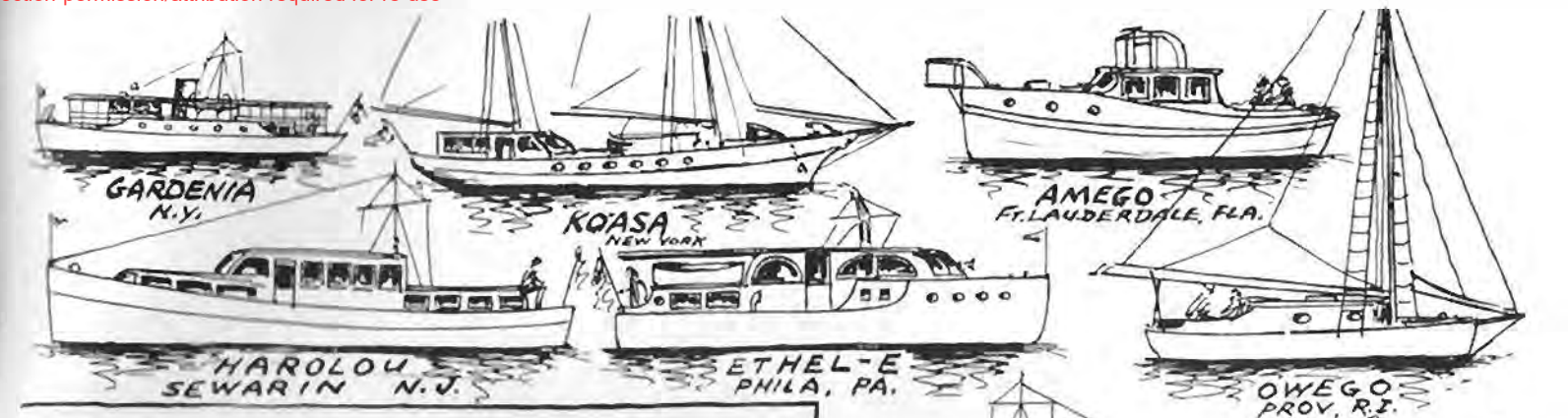


COLORED LIGHTS MAKE NEW RIVER FT. LAUDERDALE, FLORIDA
A FAIRYLAND AT NIGHT

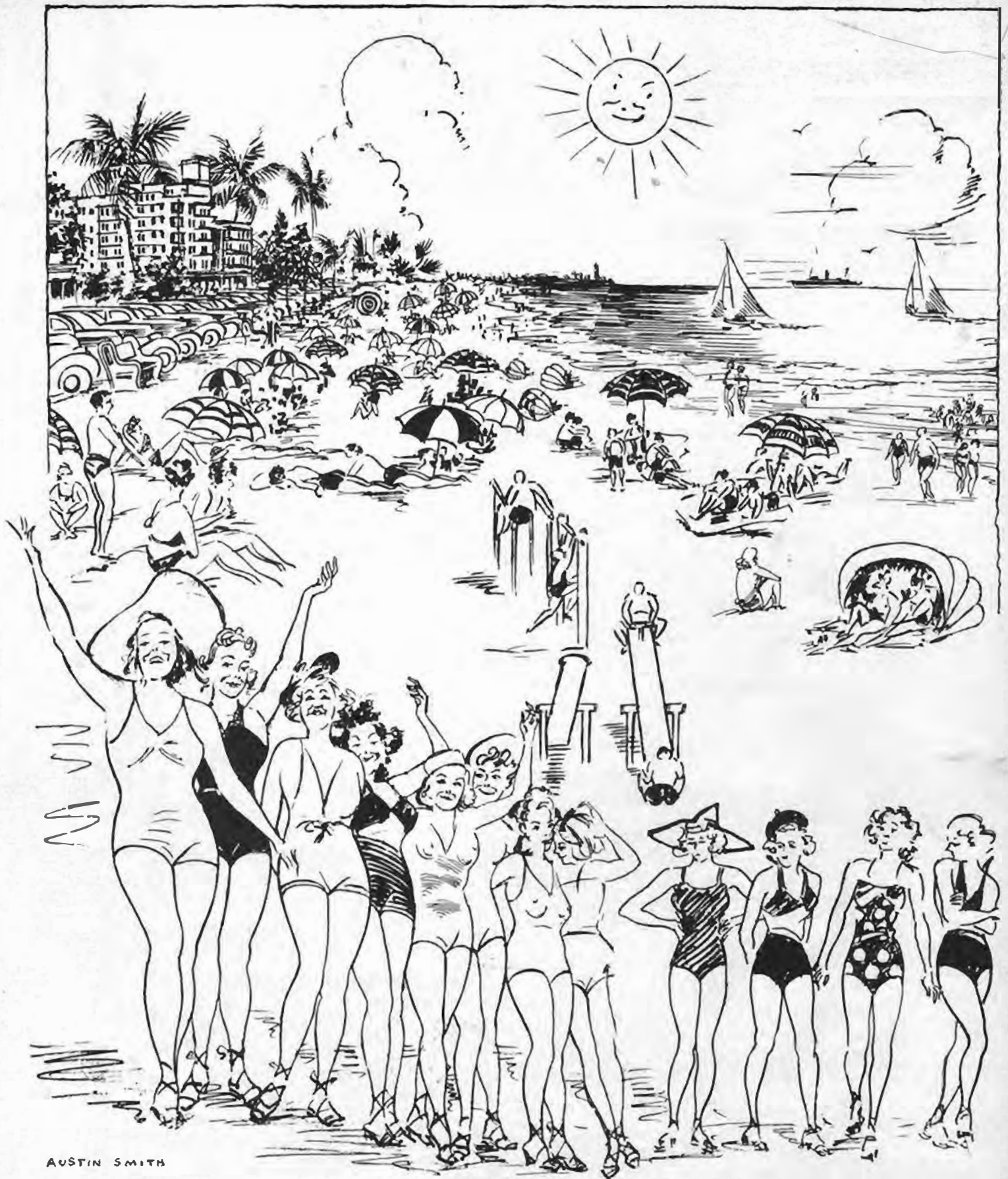




A FEW OF THE THOUSANDS OF BOATS THAT



DOCK IN NEW RIVER FT. LAUDERDALE, FLA.



AUSTIN SMITH

FT. LAUDERDALE, BEACH

Where Life Is Worth Living