

A brief chronology of Wilton Manors first church - Covenant Presbyterian

It began as a non-sectarian, community-outreach ministry of Bethany Presbyterian Church—for the burgeoning post-war families moving to Wilton Manors and Highland Estates. The first services were held in **1948** at the *Highland Estates Community House* (a few blocks from now-ICPP). A year later the new ministry was officially recognized as **Covenant Presbyterian Church**; and members began planning a permanent multi-structure church campus. Mayor Dave Turner donated the land; adjacent to the site of the Village Hall. The Chapel building was completed in **1950**—primarily through donations and volunteer labor. With continued growth, a Sunday School building (now Fellowship Hall) was added in **1951**. It took until **1958** for the main Sanctuary building to be completed.

But over-time Covenant's membership and funding declined. By **2012** its Trustees decided to disband the congregation. They offered to donate the property to various local ministries that were without a permanent home. The **New Presbyterian Church** was selected. It took New Presbyterian several years to refurbish/remodel the campus to meet their needs. An early project was to return the Chapel to its original 1950-look. Among other things, this included removing a modern drop ceiling and restoring the elaborate, handcrafted beam ceiling and chandeliers—as shown below. We commend their historic restoration and preservation efforts!

For more history and images, download our *Covenant Presbyterian*-
an mini-archive at: <https://tinyurl.com/CovenantPres>

WILTON MANORS - HIGHLAND ESTATES

COMMUNITY CHURCH

Announces A New Schedule

Sunday School

9:45 - 10:45 A. M.

Church

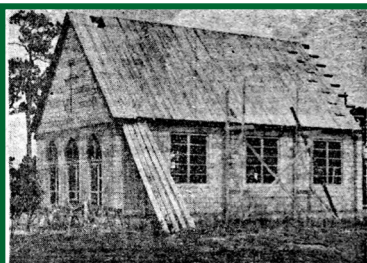
7:30 - 8:30 P. M.

EVERY SUNDAY
CLASSES FOR ALL AGES

HIGHLAND ESTATES
COMMUNITY HOUSE

Corner N. E. 5th Avenue & 27th St.

Everyone Is Invited



(Daily News photo by Phil Weidling)
COMMUNITY SPIRIT is responsible for construction work being done on the new Presbyterian church in Wilton Manors. The church has been adopted as a community project and benefits have been held to raise funds. In addition to this, many of the residents have contributed much of their spare time to actual construction work.



Wilton Manors Historical Society

Questions or comments? Email us at wmhs@WMHistory.org