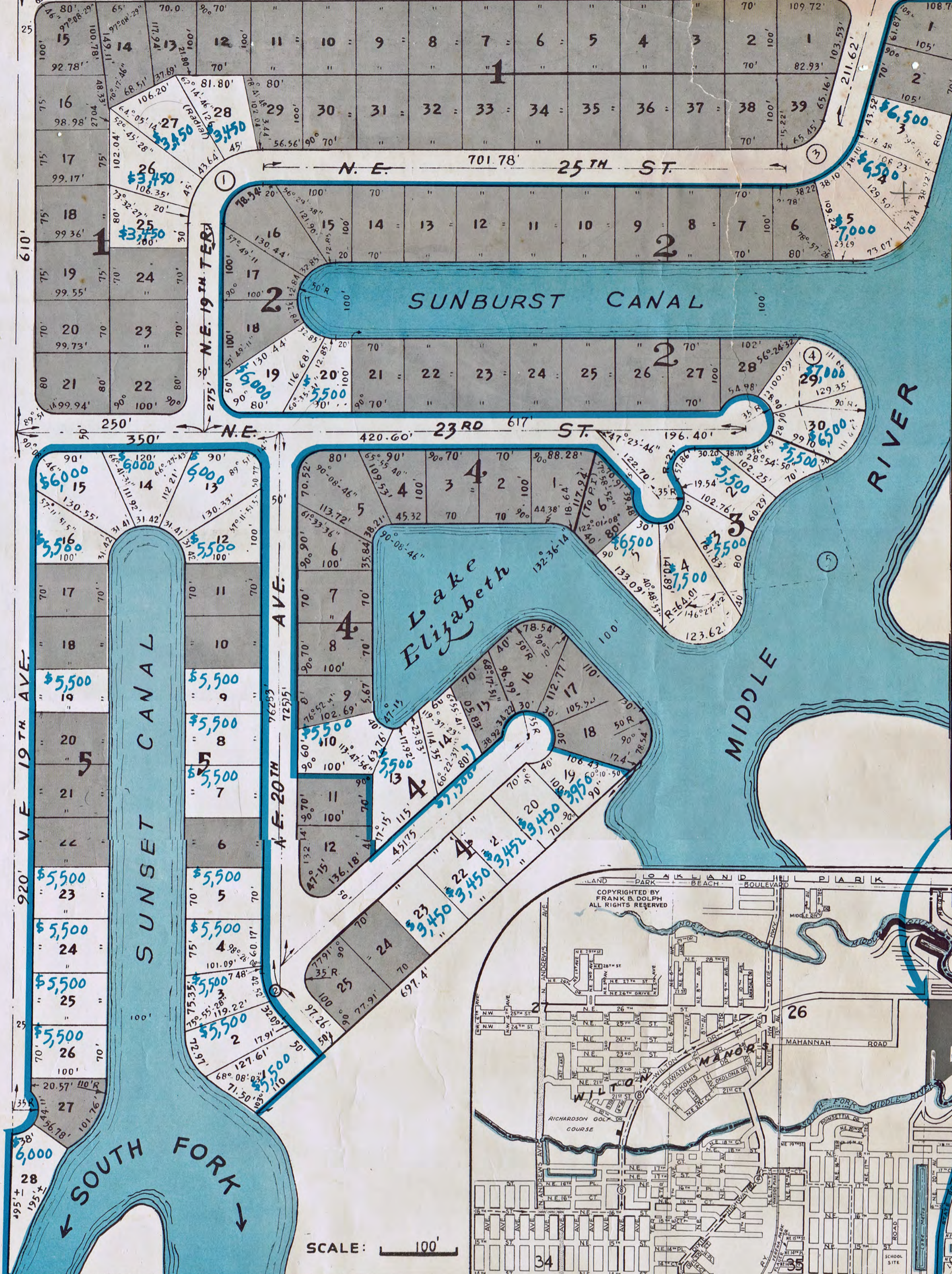


1/4 Cor West
bdy. SEC. 25

N. E. 26TH ST. 1289.66' (GALT BLVD.)
1155.07'



**WATERFRONT
PROPERTY
IS REALLY
GETTING
SCARCE!**

THE MAP BELOW CLEARLY IN-
DICATES THE LIMITED QUANTITY
OF WATERFRONT HOMESITES AVAIL-
ABLE IN N.E. FORT LAUDERDALE.
THE WATERFRONT LOTS IN CORAL
POINT ARE AMONG THE MOST BEAUTI-
FUL EVER DEVELOPED IN THIS
AREA, AND CANNOT BE DUPLI-
CATED FOR PRICE AND LOCATION.
SEE YOUR BROKER

CORAL POINT

SCALE: 100'

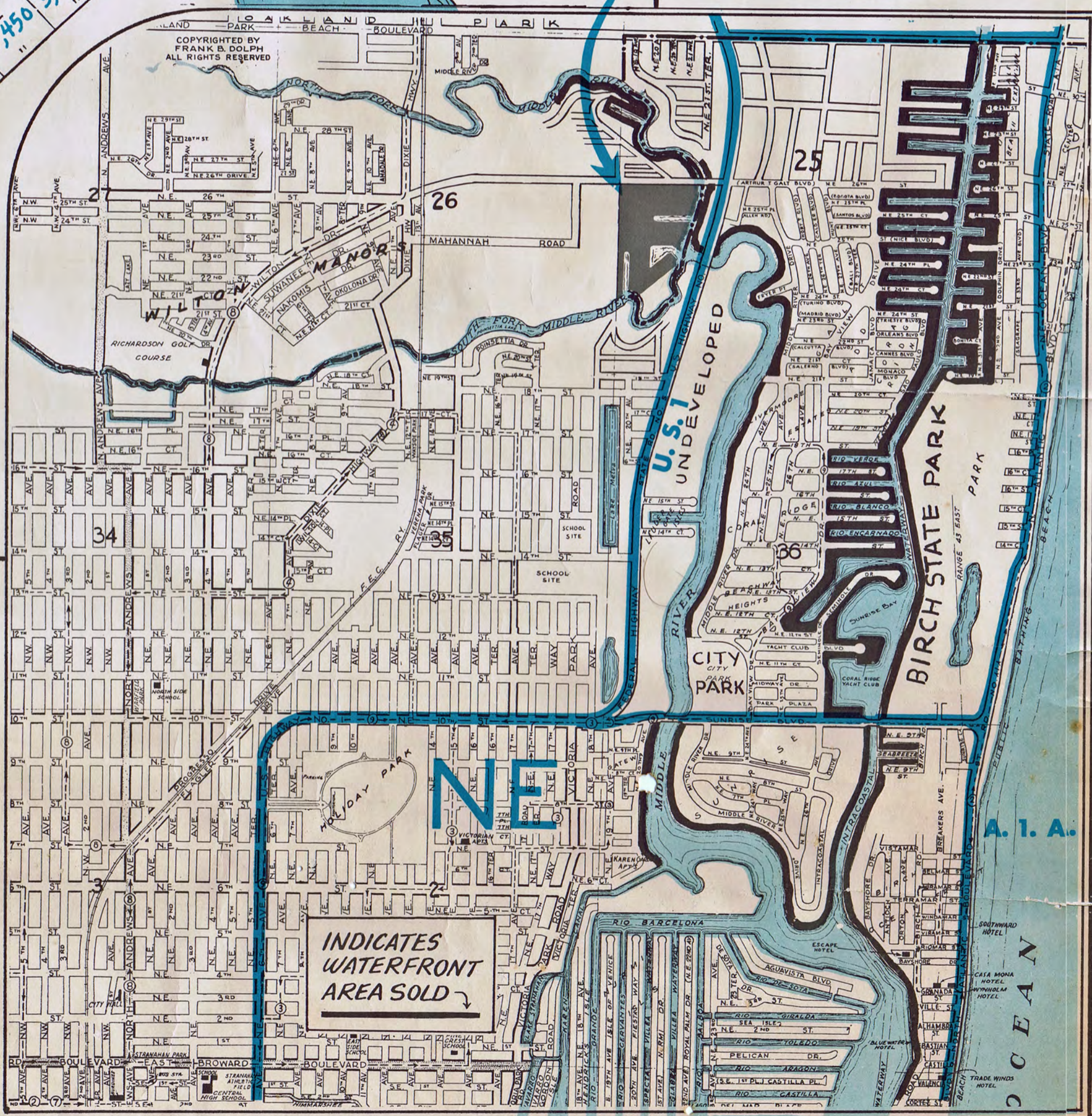
CORAL POINT

- NOTE:
1. Prices subject to change without notice.
 2. Sales plat subject to modifications which may be required, to entitle said plat to be recorded in public records of Broward County.
 3. Lot dimensions are approximate. For exact dimensions check with Coral Ridge Properties.

Terms on the sale of all lots:

1. All cash; or
2. 1/2 cash, balance 1 and 2 years, @ 6% interest.

CORAL RIDGE PROPERTIES
716 NORTH FEDERAL HIGHWAY
PHONE JA-2-1716



Coral Point Sales Plat - ca. 1953

From original document donated to WMHS by Dennis Gluck-stored in the archive of the Broward County Historical Commission