

*From Rural Roots to Urban Village:  
Milestones Along the Path*



© Wilton Manors Historical Society Digital Collection



**-A WILTON MANORS HISTORICAL SOCIETY PRESENTATION-**

*For the 2022 Wilton Manors 75<sup>th</sup> Anniversary Celebration*

Images and Narrative curated by Ron and Mary Ulm

From a concept inspired by Peter Jackson of WMBA and Adrienne Foland of WMHS

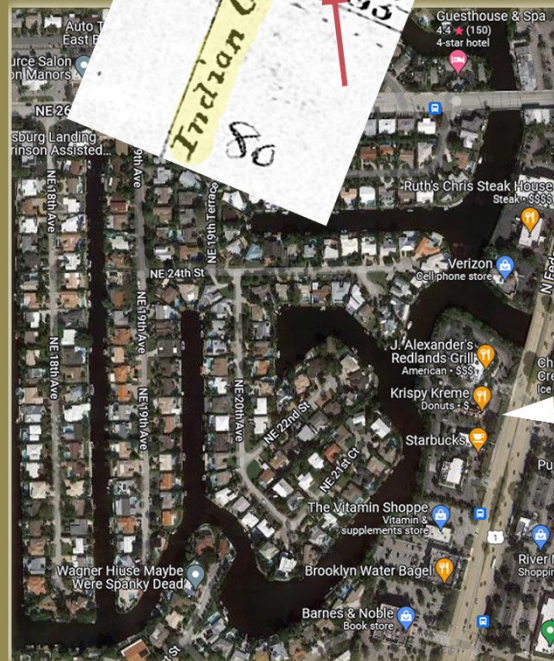
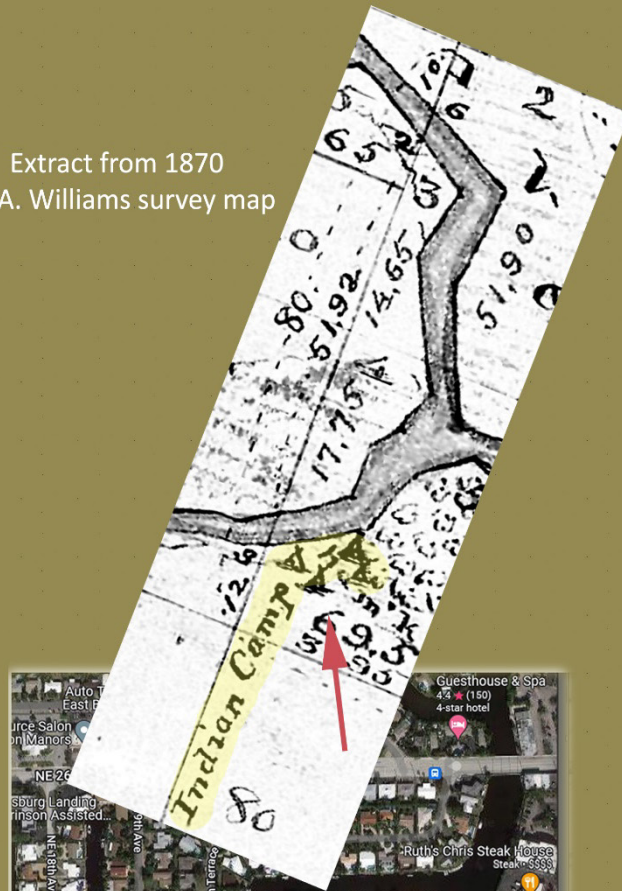
Comments, Questions or Need Additional Information? Email: [wmhs@WMHhistory.org](mailto:wmhs@WMHhistory.org)

*Wilton Manors' earliest history* begins with the archaeological finding that for millennia indigenous people sought temporary refuge in the lands that form Richardson Historic Park when roving between the Atlantic and the Everglades.

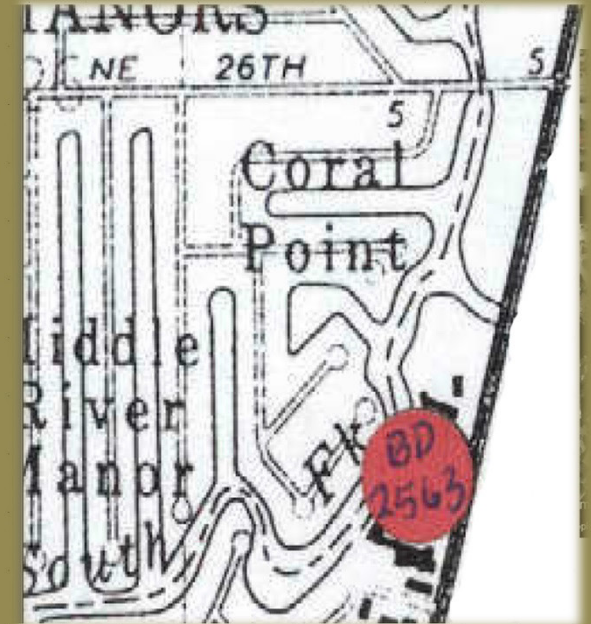
By **1870**, Seminole Indians had settled on the South Fork of the Middle River where Starbucks is today on Federal Highway.

In **1905** *Frank and Ivy Stranahan* purchased 40 acres of farmland on the South Fork directly across the river from the Seminole encampment. Their farmland is now the **Coral Point** subdivision.

Extract from 1870  
M.A. Williams survey map



## 1870s Middle River Seminole Camp



Location later documented in 1993 Master Site File BD2563 by Robert Carr and also referenced in BD4047 Master Site File report for Richardson Historic Park.

Modern location - Federal Highway, 1500 feet south of N.E. 26th Street--per Carr report.



In **1893 W. C. Collier**, the first white settler, bought 71 acres on the Middle River northeast of today's Wilton Station. His land became part of a larger farming region called Colohatchee; which included much of now Wilton Manors and Oakland Park.

Popular history has often repeated that Colohatchee means "Collier by the River". But, experts in Seminole culture and language find that the "Colo" portion more likely refers to some natural feature of the river, like the color of its water or its glistening shells, rather than to Collier. Also, given that the Seminoles had a permanent camp in the area some 20+ years before Collier, it's unlikely they would have named the area for his farm—as has often been suggested.

In **1903** we find the first published reference to an *FEC Railway depot at Colohatchee* in an Official Railway Guide. The station was located at the now NE 24<sup>th</sup> Street RR crossing. It was a major freight depot serving area farmers. In 1913, for example, some 150 train carloads of produce were shipped.

The station was later physically moved to Floranada/Oakland Park.



*Photo illustration* of what the FEC Railway depot at Colohatchee **MIGHT** have looked like ...

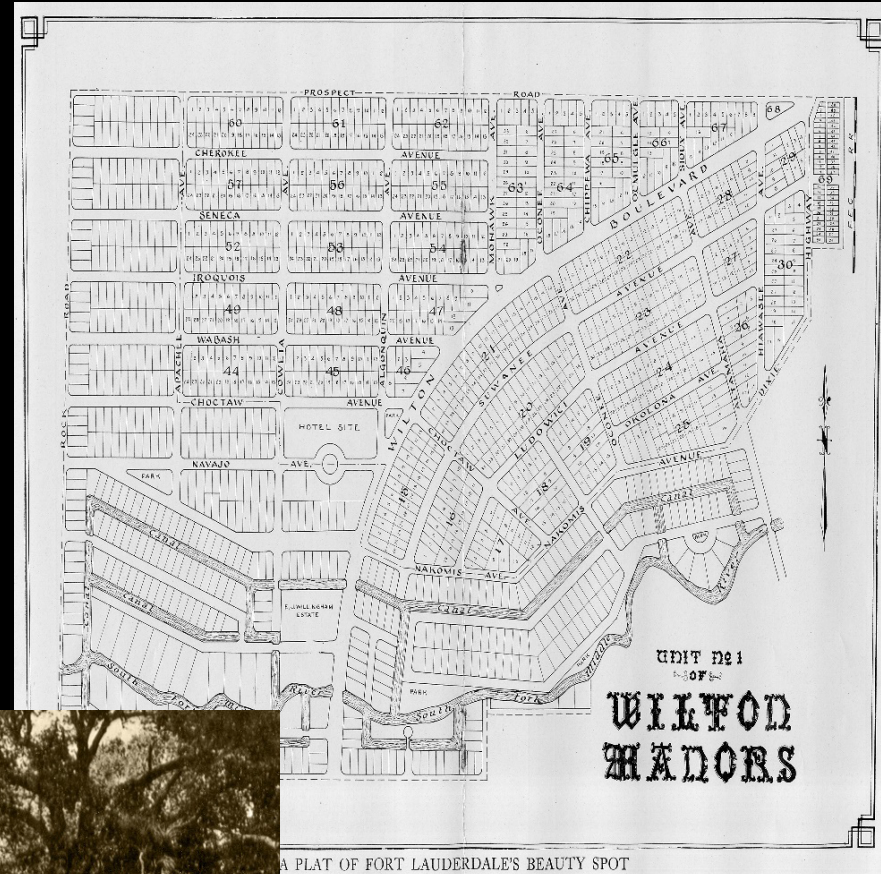
The *Colohatchee Woman's Club*, organized in **1916**, was located on the site of today's Pride Center at Equality Park. Their clubhouse also served as the primary community center and social hub for the entire Colohatchee area.



The Colohatchee Woman's Club  
(as shown in the Willingham Wilton Manors sales brochure)

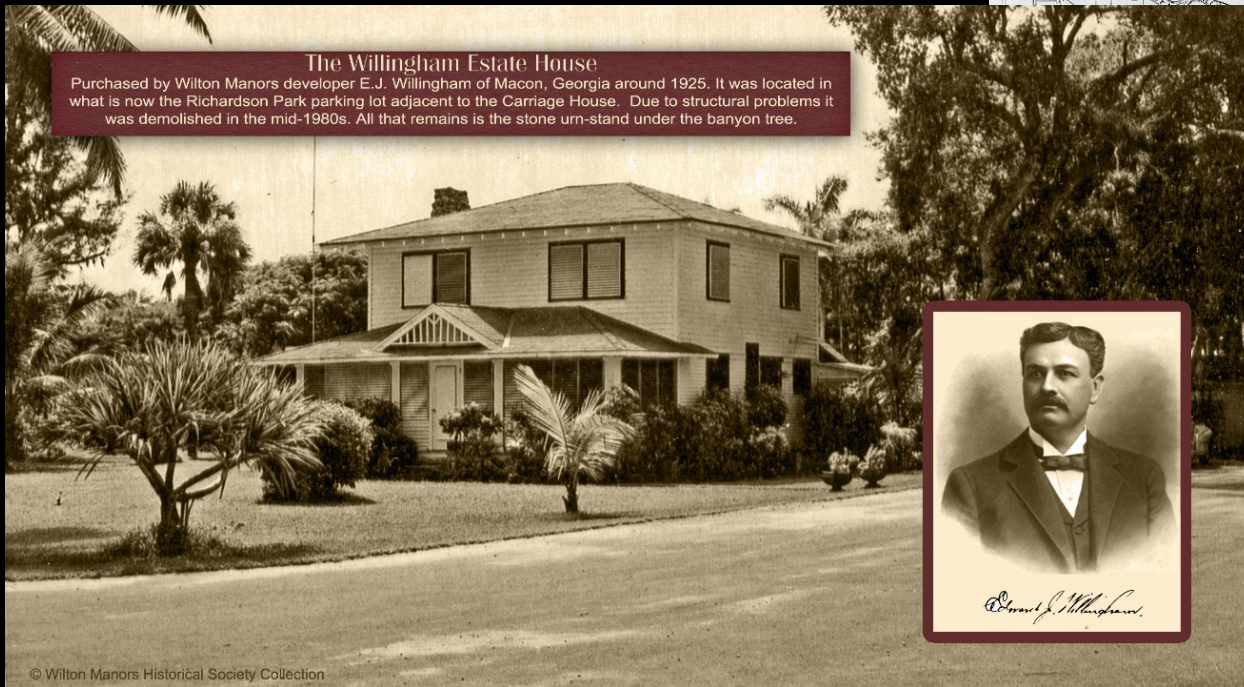
*E. J. Willingham*, a successful farmer, banker, and manufacturer arrived from Georgia in 1923. His first local land development was *Lauderdale Beach* now on A1A, south of Oakland Park Blvd. In 1925 he platted 345 acres west of Dixie Highway and south of NE 26<sup>th</sup> St. as *Unit 1 of Wilton Manors*--“*Fort Lauderdale’s Beauty Spot*”.

Willingham’s home was located at today’s Richardson’s Park and Nature Preserve.



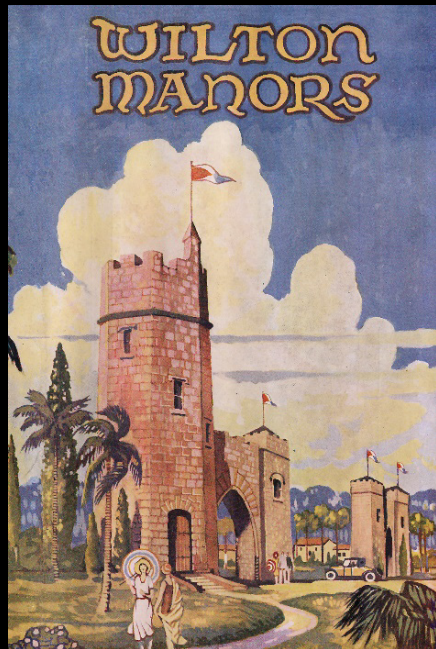
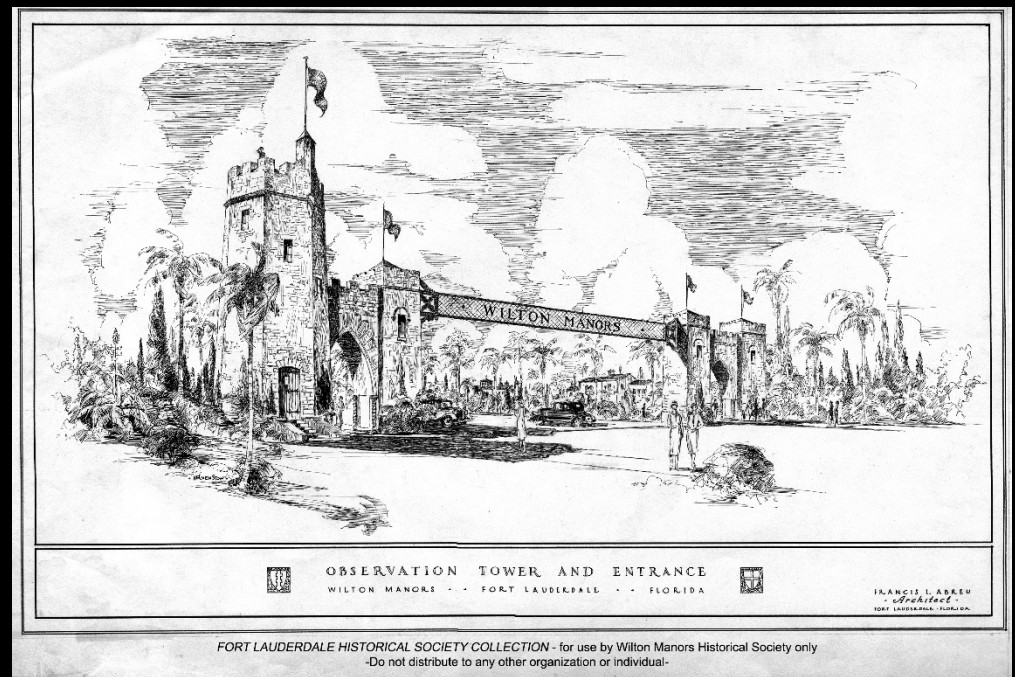
**The Willingham Estate House**

Purchased by Wilton Manors developer E.J. Willingham of Macon, Georgia around 1925. It was located in what is now the Richardson Park parking lot adjacent to the Carriage House. Due to structural problems it was demolished in the mid-1980s. All that remains is the stone urn-stand under the banyon tree.



In 1926, Willingham hired noted architect **Francis Abreu** to design the entrance to Wilton Manors--on Wilton Drive at Dixie Highway. That included a field sales office, entrance gateway and observation tower.

Willingham envisioned an upscale residential suburb. A 1926 hurricane and other events brought the depression locally well before the rest of the nation; ending those plans. He returned to Georgia and died in 1928.



Willingham's sales brochure cover



1929 school field trip to visit the Towers  
They were a favorite attraction for both locals and visitors

In **1928**, upon Willingham's death, Willingham's "right hand man", **Perry Mickel**, moved his family into the Willingham house and supervised what remained of Willingham's land development business.



Mickel children on a primitive buckboard in front of the Carriage House ca 1930

In **1936** Mickel and family built a house and tended a dairy and farmland west of Andrews Avenue at today's NW 3<sup>rd</sup> Ave. and NW 25<sup>th</sup> St. In the 1950s Mickel platted part of his farmland and built housing on it.

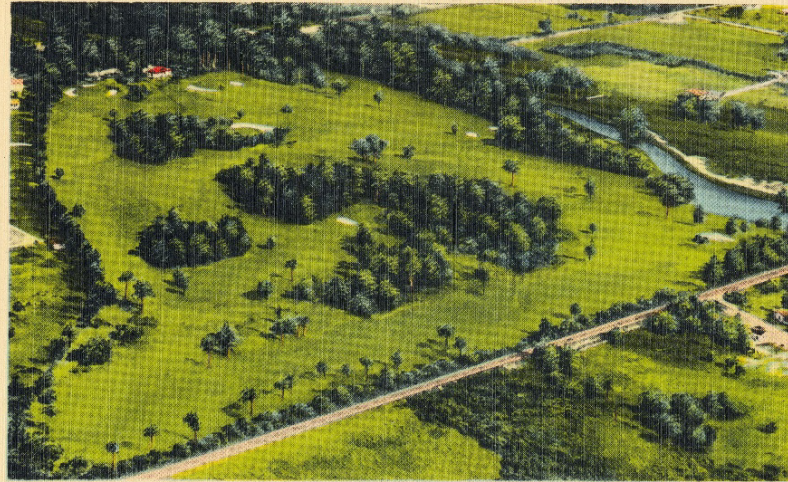


Perry Mickel Farm circa 1945

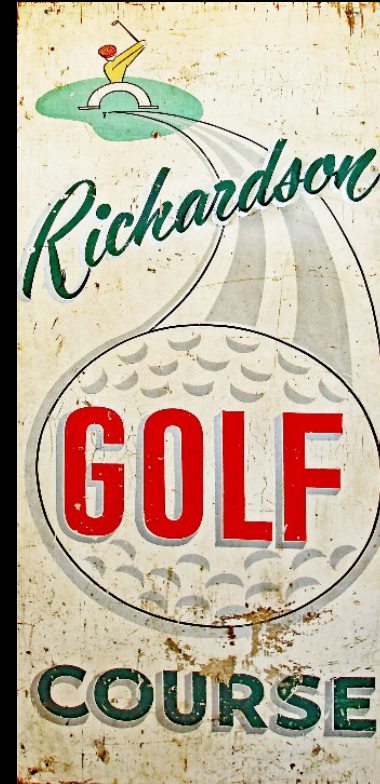
In 1938 golf course builder **George Richardson** purchased 40 acres, including Willingham's home, and the family established Broward County's third golf course.

It is now the site of Richardson Historic Park and Nature Preserve and Manor Grove Condominium Complex. The golf course officially closed in 1959.

Richardson Golf Course, NE 4th Ave., Fort Lauderdale, Florida.



ca. 1940's postcard of Richardson Golf Course  
Andrew's Ave. is in the foreground, Wilton Dr. is in the upper left and center background  
Most of this area is now Manor Grove Townhomes



#9 GREEN THE RICHARDSON GOLF COURSE  
FT. LAUDERDALE, FLORIDA E-795



In 1946 *Alvar Hagen* purchased land on either side of Wilton Drive-- from the Middle River to NE 21<sup>st</sup> Ct. on the east and the 2000 block on the west. Shortly after, on the east side, he built a laundromat (now Papa Duke's Deli) and commercial storefronts (where the Tropical Bar and Grille is today). Adjacent was the Tropical Driving Range. During the same period he constructed more commercial storefronts covering the 2000 block on the west. This was where Hagen's contractor, Clayton Leaver, had his office.



Left: Williams Pharmacy, Manors Beauty Salon, Tropical Club. Right: Helpy-Selfy Laundromat



**THE TROPICAL DRIVING RANGE**, on Manors Drive, is a popular rendezvous for the Wilton Manors residents. Here a group of spectators watch Warren McDermot, operator of the driving range, give Lucinda Lippard a few pointers. Spectators are, left to right, Mrs. McDermot, Mrs. A. Hagan, Mrs. Clayton Leaver and Mrs. Reginald Jackson. Marie Crone photo.

Just north of the "shopping center" was a golf driving-range at the site of today's City Hall.



Hagen sells real estate from an office across from the Tropical Club.

By 1946 Wilton Manors' area had grown to 350 residents and needed a way to ensure basic public services such as street maintenance and water supply.

The *Wilton Manors Civic Association* was formed in that year to provide a quasi-governmental structure for the citizens.

The Civic Association continued to play a major role in shaping the future of Wilton Manors for many years—even after incorporation.

## MINUTES

May 10th, 1946.

A Meeting was held at the office of Mr.A.Hagen in order to form an Association for the benefit of the Home Owners of Wilton Manor.

An election was held and the following officers installed:

Chairman - A.O.Lefler  
Vice Chairman - J.A.Boyd  
Sec.& Treas. - K.V.Johnston

Mr. Lefler called the meeting to order . It was regularly moved and seconded that the Association was to be called "Wilton Manor Civic Association" and meetings to be held on the 1st and 3rd Friday of each and every month. Volunteers were asked to head the various committees and are as follows: Street Improvement - James Farguhar and Harley Sanderson, Transportation - Dave Turner and A.F.Cammon, Water - A.Hagen and John Pedersen.

Ways and means were discussed as to how best obtain the objectives of the various committees, and it was decided that petitions were to be drawn and ready for the next meeting which will be held at Mr.Hagens Office on May 24th.

Mr. Hagen very kindly offered to allow us the use of his office for these meetings.

Meeting was adjourned by a motion which was carried at 10 PM  
Respectfully submitted

### **COLLECTION COSTS \$2 PER MONTH**

A garbage collector will contact Wilton Manor residents beginning today to solicit costs of two dollars a month from those who wish twice-a-week trash collections. Garbage accommodations may be obtained by the subdivision's homeowners and tenants by contacting the Wilton Manor Civic Association.

The Association has voted a month's trial of garbage collections at the two dollars per month rate, and has appealed to the County Commission to curb speeding along Wilton Manor Boulevard, scene of three accidents within a week.

### **Civic Association Appoints Officials**

A. O. Lefler was elected chairman of the Wilton Manor Civic Association Friday night when residents of the Wilton Manor area met to organize a group for the purpose of securing needed improvements in that section.

Other officers are J. A. Boyd, vice chairman, and Mrs. Katherine Johnston, secretary-treasurer.

Committees were appointed to investigate questions concerning road improvements, water, and transportation. Another committee is expected to be formed to arrange for regular trash collection. Committees are: transportation, Dave Turner and A. F. Camman; street improvements, James Farguhar and Harley Sanderson; and water, Alvar Hagen and John Pedersen.

K. Johnston  
Sec'y

In 1947 the *Wilton Manors Civic Association* petitioned the State to incorporate as the *Village of Wilton Manors*—essentially covering the portion of today's Central area south of NE 26<sup>th</sup> St. (excluding Lazy Lake and the Richardson Golf Course) and a small part of today's "Westside".

A Village Council was formed with Turner elected as Mayor and Hagen as its President.

The Village did not tax real property. Most of its revenue came from a cigarette sales tax and utility franchise fees.



In 1945 **Dave Turner** purchased the remaining 283 lots from the Willingham estate and began selling to young families moving to the area after the war.

In 1949 he donated property as the site for a Village Hall. This is the first of other of his properties that he donated to benefit the community.

The Village Hall was built by Civic Association volunteers, and paid-for by various fund-raising events; including the famous Village barbeques.

Ft Lauderdale News, Aug 08 1960



**VILLAGE HALL** — A tribute to the civic pride of rapidly growing Wilton Manors is the village hall, shown above. The building was constructed by the labor of the villagers, who spent their off time on Saturdays in working on the building. Wilton Manors is claimed by Mayor David Turner to be the fastest growing community in Broward county. At left is a new model home typical of those being built daily in the community.



Turner (left) with Chairman of the Wilton Manors Civic Association, Norman Malcolm, at Village Hall groundbreaking)

In 1951 the Village expanded its boundaries. It annexed the land east of the FEC Railway between the Forks of the Middle River—today's "Eastside".

And, in another annexation, added most of the land between NE 26<sup>th</sup> St. and the N. Fork of the Middle River to Andrews Ave. -- adding 350 people; along with the Highland Estates volunteer fire dept. and fire truck, housed on NE 6<sup>th</sup> Lane.



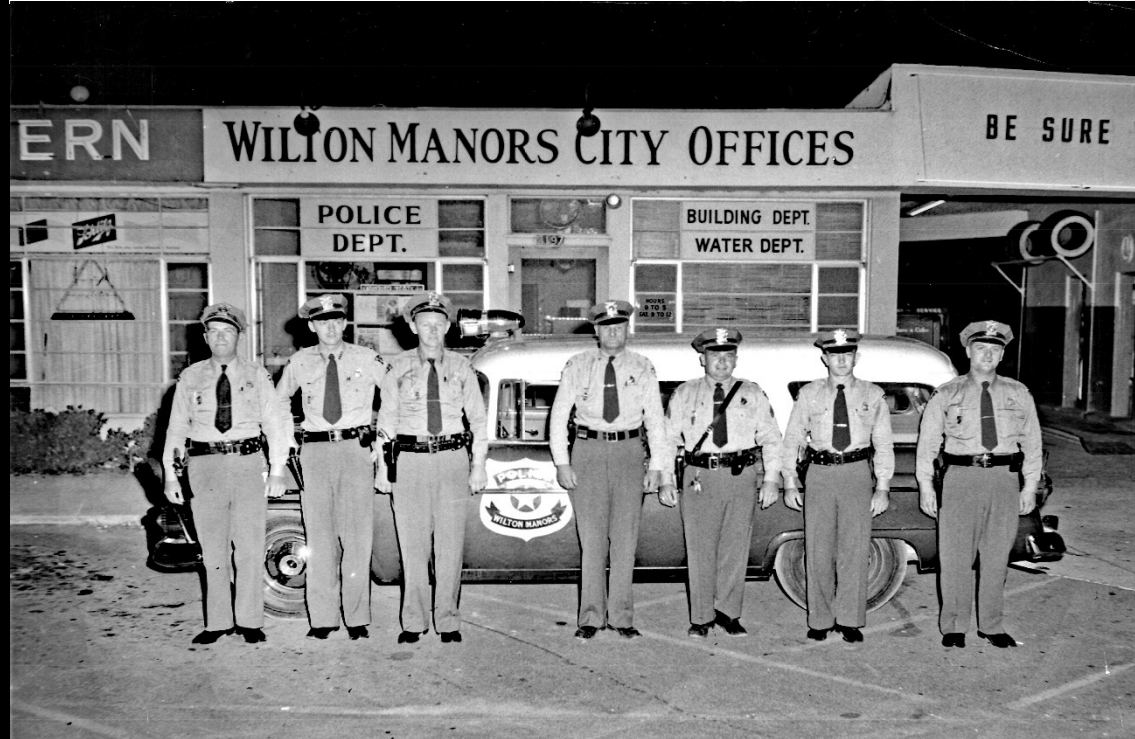
WILTON MANORS 1951

In 1952, the Village's first police and fire services were established.

Residents formed the *Wilton Manors Volunteer Fire Department* with 42 members (many of them having served on the Highland Estates volunteer fire department) and were recognized by the Village Council as the official fire company for Wilton Manors.

That same year Mayor Perry Mickel authorized the hiring of the first Village Police Chief and Police Officer.

By 1955, with Wilton Manors now a "City" rather than "Village", the department had grown to the seven officers shown here. It, and other City offices, operated from a storefront at 2197 Wilton Dr. (now the defunct Sushi Rock)—with a tavern next door.





Students watching the school's first television-donated by the Hagen family

As the Village of Wilton Manors grew, it led to the opening of *Wilton Manors Elementary School* in **1952** with 183 students. Within a year enrollment had grown to 310. At that time, the school faced NE 24<sup>th</sup> Street.

In **1998** a larger school was built along the NE 26<sup>th</sup> St. portion of the campus. Eventually, the old school was torn down.



©Wilton Manors Historical Society Digital Collection-all rights reserved

The elementary school celebrated its first May Day on May 1, 1952--complete with a variety of activities. Note that the singers are standing outside a set of awning windows that supplied fresh air for classrooms. The school was not air-conditioned in that era—not even ceiling fans!





In 1951 Dave Turner, James Dean, Bob Roberts, along with the Coral Ridge Properties (developers of Coral Gardens and Coral Point), secured the right-of-way to build a road from Five Points eastward to the river.

By the end of 1952 a bridge was built that linked Wilton Manors with Fort Lauderdale at Federal Highway—via “Galt Boulevard” (26<sup>th</sup> Street). This kick-started a period of major residential development on the “Eastside”.

As you can see, the bridge opening was a major celebration ...

©Wilton Manors Historical Society Collection

# WILTON OAKLAND

Volume 1 -- Number 16 Thursday, December 25, 1952

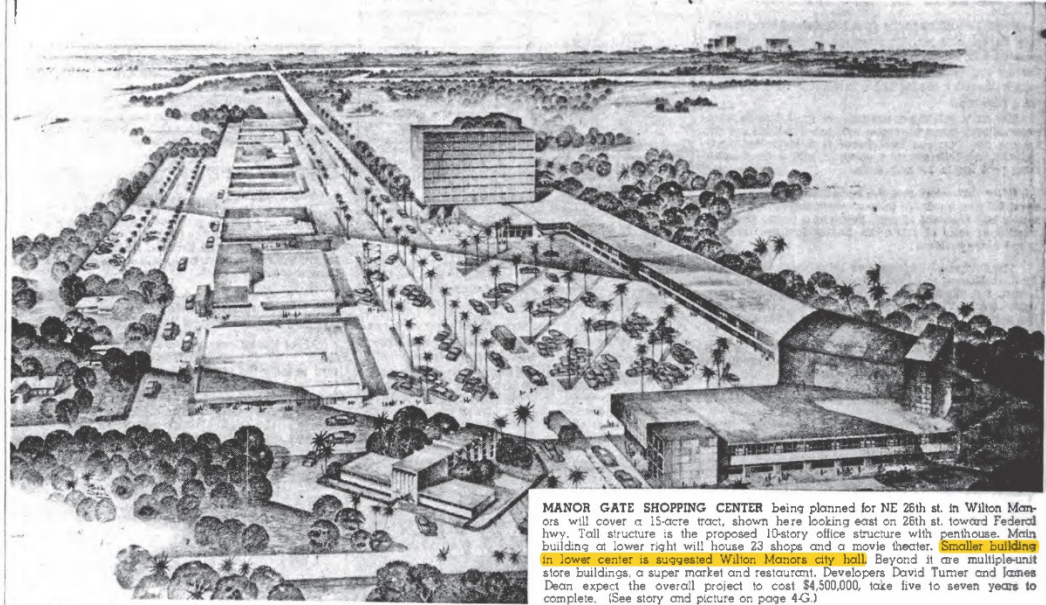


This is only part of the crowd of many hundreds jamming the new 26 Street-Galt Blvd. bridge over Middle River Sunday afternoon for the grand opening of the new span which now gives Wilton Manors a direct connection with Federal highway and a shorter route to the beach. Completion of the bridge is expected to quickly accelerate the already rapid development of this entire area.

In 1953 Dave Turner and James Dean announced plans for developing *Manor Gates Shopping Center*--a **4.5 million-dollar** project (\$49 million in today's dollars).

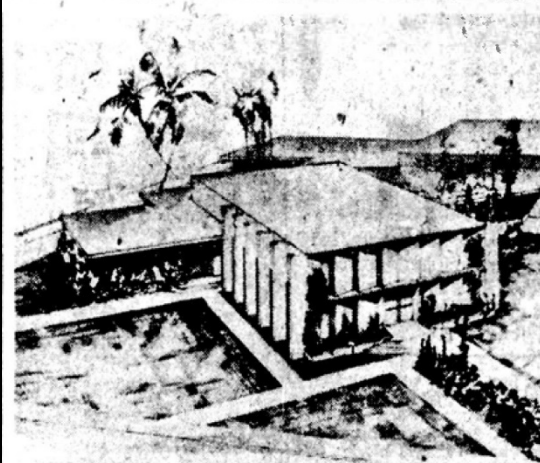
To be constructed over a 5 to 7-year period, there would be 23 stores, a movie theatre, bank, and new **city hall** on a 15-acre tract covering both sides of NE 26<sup>th</sup> Street. The anchor point was to be a 10-story office building with a rooftop restaurant.

# Plans Unveiled for Huge Wilton Center



MANOR GATE SHOPPING CENTER being planned for NE 26th st. in Wilton Manors will cover a 15-acre tract, shown here looking east on 28th st. toward Federal Hwy. Tall structure is the proposed 10-story office structure with penthouse. Main building at lower right will house 23 shops and a movie theater. **Smaller buildings in lower center is suggested Wilton Manors city hall.** Beyond it are multiple-unit store buildings, a super market and restaurant. Developers David Turner and James Dean expect the overall project to cost \$4,500,000, take five to seven years to complete. (See story and picture on page 4-G.)

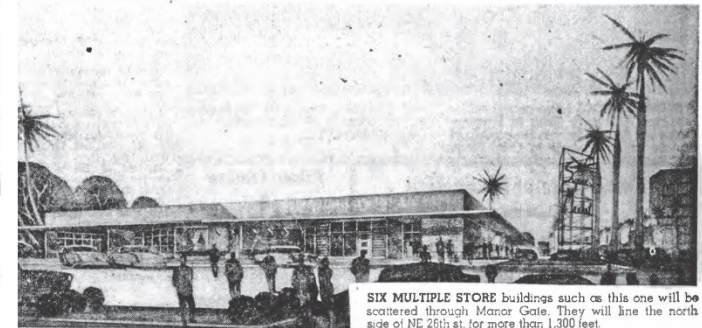
Wilton Manors Historical Society Digital Collection  
Clipped from and **Miami Herald Oct 25, 1953**



**NEW CITY HALL** at Wilton Manors will look like this. Ground for the structure was broken Friday. It will house police and fire departments, building inspector, city clerk and other offices and provide space for the city council. No date has been set for the start of construction. It was **designed by Charles McKirahan.**



**MOVIE THEATER** will be the central enterprise in Manor Gate's principal store building. Expected to cost about \$1,000,000, this two-story structure will embrace 23 stores.



**SIX MULTIPLE STORE** buildings such as this one will be scattered through Manor Gate. They will line the north side of NE 26th st. for more than 1,300 feet.

The grand plans for *Manor Gates Shopping Center* never came to fruition. The shopping center never grew beyond the single-story “strip-mall” that opened in 1953, and remains essentially the same today.

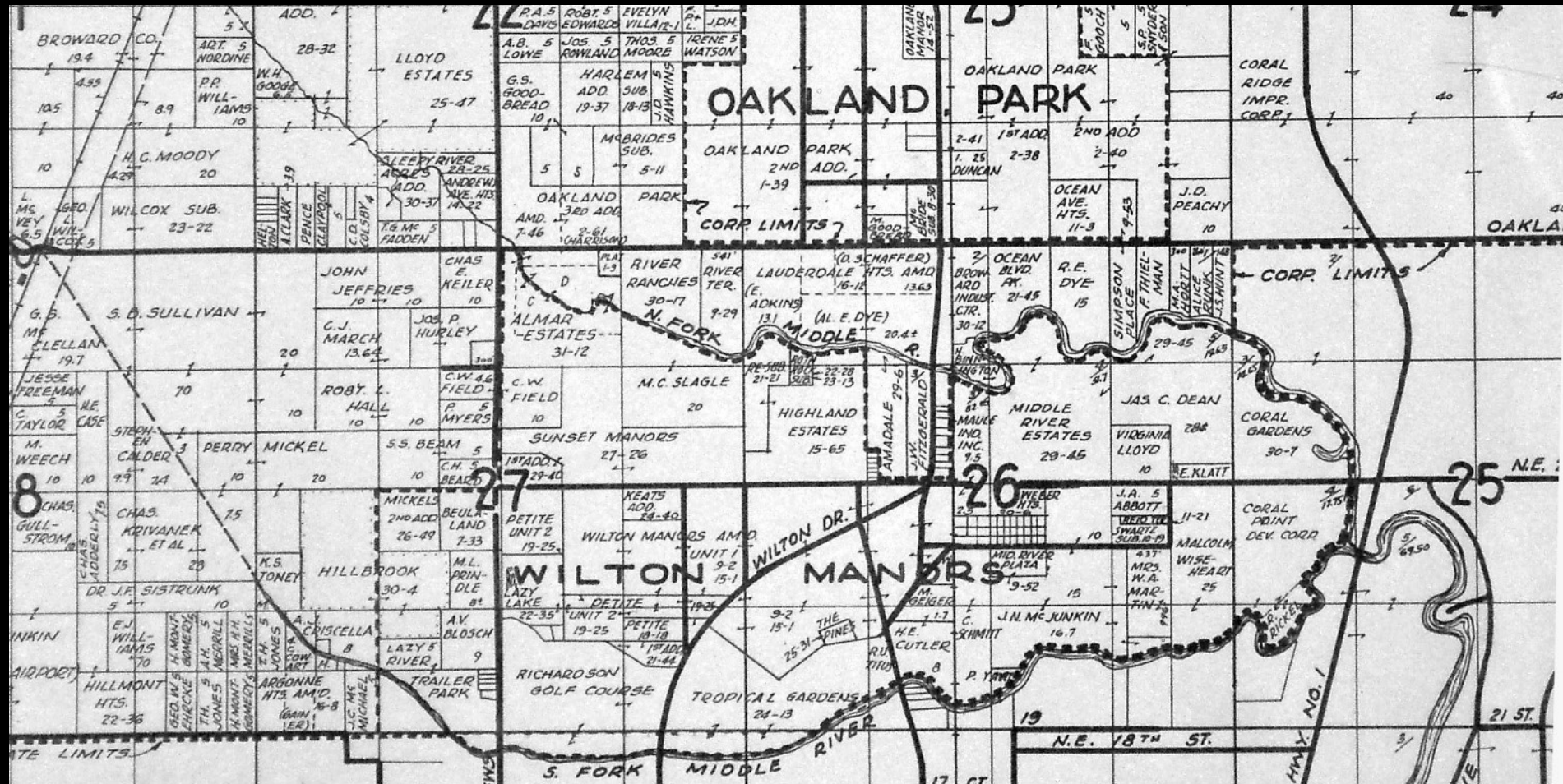
An A&P supermarket (now Holy Mackerel Restaurant) was the anchor point of the center. Other notable tenants were Williams City Drugs, Moore’s Jewelry, and James Dean’s Florida Sun Life Insurance headquarters.

Although a land deed had been accepted and ground broken for the new City Hall, the City Council ultimately rejected (some say under political pressure) Manor Gates/NE 26<sup>th</sup> St. as the right location.

The proposed bank was built on the north side of the street and **not** part of the shopping center.



In 1953, with most of its basic municipal services in place, the Village of Wilton Manors re-incorporated as a "City" to give it greater legal and financial authority and to prevent its takeover by Ft. Lauderdale. At that time, it extended its boundaries to include all the property west of Andrews Ave. bounded by the South Fork of Middle River to the Seaboard Railroad and by Oakland Park Blvd.



Broward County Historical Commission Collection  
 (c) 1953 Dolph Map Company - BCHC indicates Dolph retains all rights - cannot be reproduced without permission  
 (extracted from larger map image by Wilton Manors Historical Society 10/30/08)

To accommodate the numerous and varied businesses along Wilton Drive and to facilitate the movement of traffic in and out of the City, Wilton Drive is expanded from two-lanes to four in 1955.

14 FT. LAUDERDALE DAILY NEWS, Fri., May 6, 1955

# TOMORROW IS THE BIG DAY!

# ★ WILTON MANORS ★

# ★ FIESTA ★

*Celebrating the FORMAL OPENING of BEAUTIFUL NEW FOUR-LANE WILTON DRIVE*

**TONIGHT and TOMORROW**

Come on out and see our beautiful new 4-lane Wilton Manors Hotel & see in color at last. You'll enjoy the ease of driving, the ease of parking, and most of all, the new shopping pleasure with the expansion.

Attend Our Big Celebrations Tonight and Tomorrow and we invite you to join in the festive fun and enjoy the "See you in Wilton Manors!"

INVESTIGATE WILTON MANORS AS THE PLACE TO LIVE AND SHOP

Complete Census of Wilton Manors Since Incorporation

	1940	Now
Population	300	over 5000
Churches	1	2
Stores	1	25
Business	1	25

Building Permits for 1st Quarter of 1955 Exceeded \$1,000,000

**HUNDREDS OF DOLLARS OF DOOR PRIZES GIVEN AWAY STARTING AT 5 P. M. SAT.**

**Baby SHOW AND DIAPER DERBY**

3 P. M. SATURDAY, MAY 7th AT WILTON DR. AND 21st ST.

3 CLASSES

Infants to 1 Year 1 Year to 2 Years 2 Years to 3 Years

6 AWARDS IN EACH CLASS

All Age Wilton Manors Merchant Award Entry Book

**FIESTA BOOTHS AND CONCESSIONS**

HAMBURGERS By Woman's Club

FISH POND and BALLOONS By Junior Women's Club

COORS and DART GAME By Club Societe

DUNKING GAME By Jaycees

HOT DOGS and POPCORN By P.T.A.

CAKE WALK By St. Clement's Parish

**KIWANIS CLUB**

**Bar-B-Q**

RIBS and CHICKEN 5 to 8 P. M.

SATURDAY, MAY 7th

**DANCE 4 P. M.**

SATURDAY — NO ADMISSION

Musical by JESSE HOWARD'S RANGELY NIGHT HAWKS SQUARE and ROUND NOVELTY AND EXHIBITION DANCES

**BIG CARNIVAL RIDES**

**PARADE!** SATURDAY, MAY 7th

Crowning of Queen

Sponsored by **LIONS and J. C.'s**

Fee for both adults and kids — Roller Coaster — Loop — A-Plane — Ferris Wheel and 3 Novelty Rides for the Kiddies.



The May 6, 1955 Ft. Lauderdale News announces the opening of "Beautiful New Four-Lane Wilton Drive"

The Five Points intersection after Wilton Drive is widened to four-lanes

In 1955 Al Hagen donated land for a public park – now Hagen Park and Community Center. That same year he donated land on which to build a *Woman's Club*. Also, in 1955, Wilton Manors Sports, Inc. leased land from Mickel to use as a baseball field. In 1960, the City acquired it. Today it is Mickel Park.



1955 ca Hagen Park Community Center




1955 ca Wilton Manors Woman's Club



David French when Mickel Field was under construction

By 1956 Wilton Manors had some 1500 homes occupied and many more under construction. The need for City services had out-stripped those that could be supplied from its primary revenue source--a cigarette sales tax.

Residents understood that the time had come to raise revenue for the City through taxing real property. A property tax referendum to help fund City services passed that year with only minor objections.



**FOR IMMEDIATE OCCUPANCY**

**2 BEDROOM, 2 BATH**  
and  
**3 BEDROOM, 2 BATH**  
**HOMES PRICED FROM**  
**\$15,950**

Excellent Financing Available

Be sure you visit Jenada Villas and see the homes that give you so many new features for so little money. See the resident-owned recreation area . . . perfect for the family with growing children.

**JUST LOOK AT THE FEATURES**

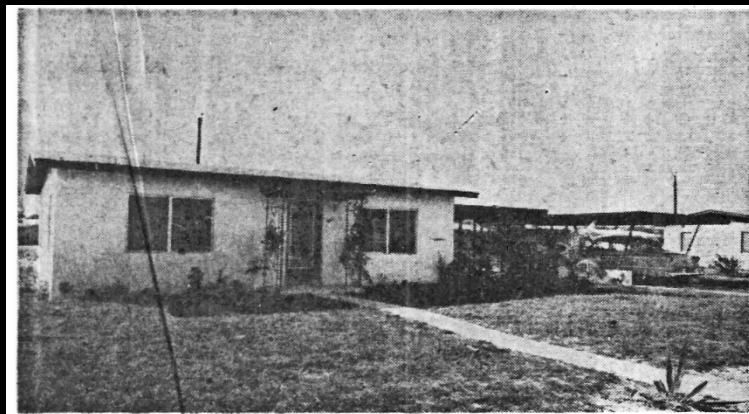
- Private recreation area
- Swimming pool
- Bowling facilities
- 4 blocks to shopping center
- 6 minutes to beach, via direct route
- 1 minute to downtown Ft. Lauderdale
- Very close to St. Clement's Church and Parochial School
- 6 blocks to Wilton Manors School
- Police, fire protection, garbage service
- Each home is individually planned and constructed . . . **DEFINITELY NOT A PROJECT!**
- Quiet suburban atmosphere with direct access streets to everywhere in Ft. Lauderdale

**LOCATION:** Drive North on Andrews Ave. to N. W. 29th St. Turn left 3 blocks to sales office.

**SO MUCH FOR SO LITTLE IN JENADA VILLAS**  
See these homes for yourself and prove that you can pay more but you can't buy better.

**FULL BROKER COOPERATION**

**Jenada villas**  
WATERFRONT AND NON-WATERFRONT HOMES



**HOME SOLD IN SUNSET MANORS SUBDIVISION**

In the Sunset Manors subdivision in Fort Lauderdale, this two bedroom home at 508 NE 47th St., was sold by Edward J. Crowell to Mr. and Mrs. David J. Vogt. Stumps showed a selling price of \$10,000. Sale was handled by the moderate homes division of Seese Realty, Fort Lauderdale.

**AND NOW**  
in Beautiful Almar Estates  
**ALBERT RICKEL, Builder**

**Presents NEW MODEL HOMES**

**7 N. E. 29th STREET**  
(100' Corner Lot)  
**2 Bedrooms, 2 Baths**  
G. E. Kitchen - Florida Room  
Landscape - Patio  
Forced Air Heat  
Double Carports - Large Utility  
**\$15,600**

**101 N. E. 29th STREET**  
(100' Corner Lot)  
**2 Bedrooms, 2 Baths**  
Florida Room - G. E. Kitchen  
All Modern Features  
Double Carports  
**\$15,600**

**43 N. E. 29th STREET**  
(Waterfront - 95' Corner Lot)  
**2 Bedrooms, 2 Baths**  
Florida Room  
Seawall - Landscaped  
Forced Gas Heat  
Carports - Large Utility  
**\$15,600**

**WILL BUILD TO SPECIFICATION**

On North Andrews Ave. just South of Oakland Park Blvd. Directly opposite St. Clement's Church and School. Andrews Ave. to 29th Street.

**OPEN DAILY FOR INSPECTION**

**Taylor Builders Invite You to See the Model Home at South Coral Point**



2016 N.E. 21st COURT, SOUTH CORAL POINT

**Furnished Waterfront Home NOW OPEN FOR INSPECTION**

**\$23,950**

Beautifully Furnished by **WELLEN'S FURNITURE CO.**

**TAYLOR BUILDERS**  
Telephone LO 4-0912

**DIRECTIONS:**  
Federal Highway to N.E. 26th St. (Gall Blvd.) . . . turn west over bridge, and take first left, at Coral Point along bank entrance sign, on N.E. 25th Street . . . then continue to south end of N.E. 20th Ave. Watch for our sign.

By 1957 Wilton Manors needed a proper city hall to govern a municipality whose population was rapidly growing. Food Fair, a major supermarket located on Wilton Drive, donated some of its land for a new city hall that would also house a fire and police station.

The new City Hall was built on NE 21<sup>st</sup> Ct. and remained in use until 2010.

The former Village Hall became the site of the library.



Wilton Manors City Hall #2 1959

© Fort Lauderdale History Center  
Gene Hyde Collection

Wilton Manors City Hall in 1959 at 524 NE 21<sup>st</sup> Court  
*Ft. Lauderdale History Center-Gene Hyde Collection*



The **1960** census showed Wilton Manors having a population of 8,257 – *almost 10 times larger* than its 1950 population of 883.

That year, over 80 businesses were in operation on Wilton Drive. It provided an easily navigable, coherent and full-service downtown to meet virtually all the needs of the residents--without leaving “the Drive”.

In **1964** the last vestige of Willingham’s entrance gateway was torn down to build a gas station.



1960s Wilton Dr. & NE 26<sup>th</sup> St.  
(now Wells Fargo Bank)



1960s Wilton Dr. & NE 7<sup>th</sup> Ave. (now Gym Sports Bar and The Pub Wilton Manors)



1960s 2010 Wilton Drive (former Siam Cuisine)



PUBLIX Andrews Ave & Oakland Park Blvd - August 26, 1965

Courtesy of Publix Supermarkets archive - used with permission

In 1965 a Publix Market opens at Andrews Ave. and Oakland Park Blvd--the same year that Andrews Ave and Oakland Park Blvd were expanded to four-lanes.



To accommodate the need for more housing for a growing population, in 1972 and 1973 two major residential developments were announced: Manor Grove Village in 1972 and Lunde Towers (now Wilton Towers) in 1973.

*Manor Grove Village* CONDOMINIUM

FALL **SALE**  
SPECTACULAR  
**CLOSING OUT**  
LAST FEW REMAINING APTS.  
from \$17,900.

**ONLY \$900** DOWN  
MOVE RIGHT IN!  
PAY ONLY \$175. per month - no closing cost



Near the Center of the City, only Minutes to Beach,  
Three Shopping Centers, on a Bus Line.  
Full Recreation, Putting Greens, Swimming Pool,  
Card Room, Lounge, Saunas, Billiards,  
All This Beside a Winding River in the Midst of Ancient Oak Trees.

MODEL OPEN 9 TO 5 P.M. DAILY

1 BEDROOM, 1 1/2 BATH From \$18,900.  
2 BEDROOM, 2 BATHS from \$24,900.  
Townhouses: 2 BEDROOM, 1 1/2 BATH \$23,900.

OAKLAND PARK BLVD.  
2000 NORTH ANDREWS AVE  
SUNRISE BLVD.

*Manor Grove Village*  
2000 NORTH ANDREWS AVENUE  
FORT LAUDERDALE, FLORIDA 33311  
TEL. (305) 563-7800

Another Development by  
Deutsche Const. Co.

Models Furnished by  
HELMUT'S FURNITURE  
of Fort Lauderdale

1972 Ft. Lauderdale Magazine advertisement

*The Creative Life*



Vol. 7, No. 3 1550 N.E. 26th STREET, FT. LAUDERDALE, FLA. 33305 March, 1973

**AT LAST! LUNDE TOWERS IS UNDER CONSTRUCTION**

Artist's rendering of Lunde Towers, to be located in Wilton Manors on South Fork of Middle River.

**GROUND BREAKING**

The official "Ground Breaking" for Lunde Towers was held on Sunday, February 18, 1973. The site is one of the most attractive in Broward County, covered with magnificent cypress trees, wild orchids and beautiful birds. Located at the entrance to Town House Isle sequestered off from Wilton Drive, the arbor of trees guard the entry to this lovely spot. Officiating at the "Ground Breaking" ceremony were Mr. William Passalacqua, Al Hagen, Worthy Seese, Dr. Lunde, Mayor Gerald Thompson and city council members Arthur Welling and Marsha Stafford. The apartment



A scene at the "Ground Breaking" — church members and city dignitaries join for the exciting event.

Continued on Page 2

**FOR THOSE WHO ENJOY A DAY AT GOLF OR THE BEACH, REMEMBER OUR 9:30 A.M. SUNDAY SERVICE**

1973 Church of Religious Science Newsletter

In **1987** Wilton Manors began to recognize its status as an island surrounded by the North and South Forks of the Middle River when resident Norma Rollinson, a graduate of Pratt Art Institute, designed a new entry sign *with the now-familiar greeting*—“**Welcome to Wilton Manors-The Island City**”.

In **1992** the *Annual Island City Canoe Race* is launched to celebrate Wilton Manors’ birthday. It was its 45<sup>th</sup>!



### Civic greeting

This Northeast Fourth Avenue sign is one of 12 put up by Wilton Manors in June. They were designed by resident

Norma Rollinson, and note the city’s status as an island surrounded by the north and south forks of the Middle River.

Staff photo/NICHOLAS R. VON STADEN



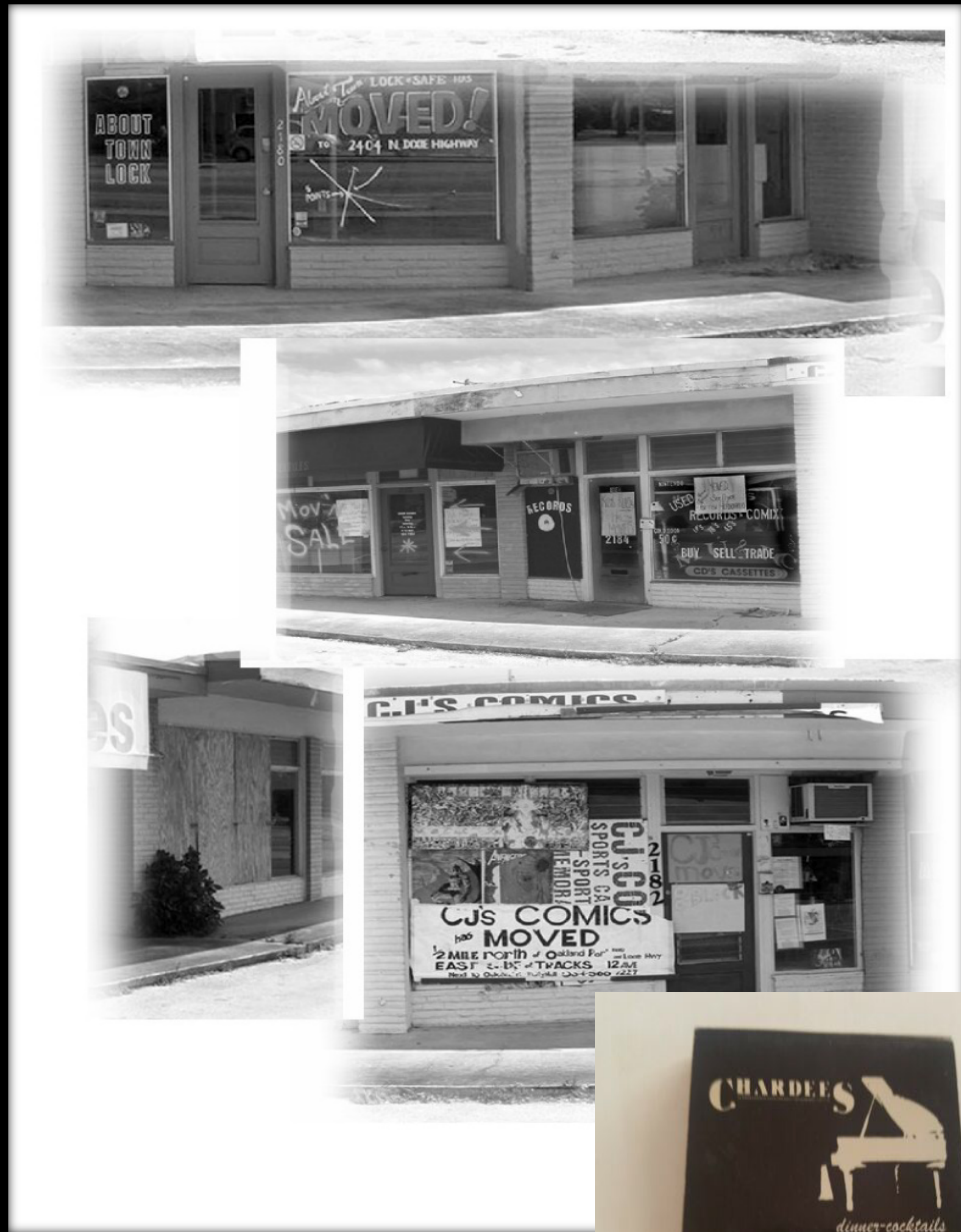
The **1990** Census reported a population decline of about 1,000. The City protested, and the figure was raised by about 500 people. Nevertheless, Wilton Manors had fallen on economic hard times and was in desperate need of redevelopment.

Sandra Steen was elected as mayor in **1990** and to date, has been the only woman to hold this office. She focused efforts on beautification and code enforcement.

Tony Dee opened *Chardees*, the first gay restaurant on Wilton Drive<sup>1</sup>. More gay businesses followed, with *Tropics* in **1995**, and *Georgie's Alibi* in **1997**.

To attract additional upscale venues to the Drive, the City Council established an *Arts and Entertainment District* in **1997**.

<sup>1</sup>Subsequent to original publication of this presentation, it has been documented that, while not as well-known, "JJs Den" in the early 1980s and "The Palms" in 1986 were likely the first two gay establishments on Wilton Drive--RAU/WMHS 05/2022.



In **2000**, *John Fiore* was elected mayor of Wilton Manors and earned the distinction of becoming Broward County's first openly gay public official.

Also, in **2000**, the first *Stonewall Pride Parade and Street Festival* was held on Wilton Drive in honor of the 1969 Stonewall Riots. Today the annual event attracts more than 35,000 residents and visitors.



In **2004** Wilton Manors gained national attention when a *New York Times* article noted its revitalization efforts: Four major residential and mixed-use projects were being planned.

Below left: In **2006**, *Wilton Station*, a 272-unit condominium complex on NE 26<sup>th</sup> Street was built on the site of Wm. Thies & Sons— a major beer distributing company.

Below right: In **2007**, *Island City Lofts* opened at 2301 Wilton Drive on the former site of Spectrum House—a 42-bed drug treatment center that had operated on Wilton Drive for nearly 25 years.



In 2006, *Belle Isle*, a mixed-use development of 51 Townhomes on Wilton Drive, replaced the 1940's-era *Trailer Haven* "mobile home community".





In **2008**, the *Pride Center at Equality Park* relocated from Ft Lauderdale, buying 5.6 acres in Wilton Manors on the same site as the 1920s Colohatchee Woman's Club. It became one of the largest pride centers in the U.S.



Equality Park is located on the same site as the original 1920s-era Colohatchee Womans Club -- then the social center of the community

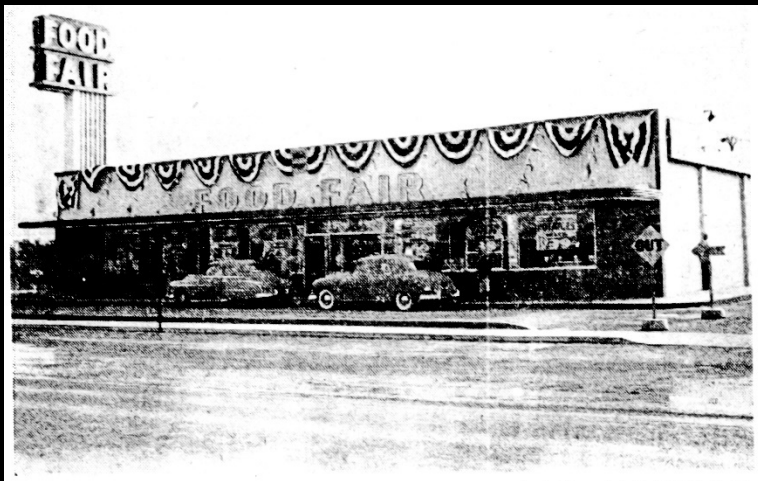
In **2020**, the Pride Center opened the *Residences at Equality Park*--to provide affordable housing for senior adults.



Photo: Eisenthesky Productions

Revitalization continued when in **2010**, *Gables Wilton Park*, a mixed-use residential complex, replaced several long-time shops and a nursery fronting Wilton Dr. and NE 21<sup>st</sup> Ct.





**NEW SUPER MARKET**—The new Food Fair market, pictured above, was opened recently on Wilton Dr. in Wilton Manors. Built and designed by the firm's

(Daily News photo by H. J. Indicott) own construction department, the new store offers every modern convenience and plenty of parking space on the large lot.

The **2010** census found Wilton Manors as second only to Provincetown, Mass. in the proportion (15%) of gay couples to the total population.

In **2010** a *new City Hall* opened at 2020 Wilton Drive—on the land once owned by Food Fair, Wilton Manors' first chain supermarket in 1953.

Revitalization within the City continued when in **2016** the *Metropolitan* opened at 1220 NE 24<sup>th</sup> Street. This 4-story luxury apartment complex replaced *Middle River Trailer Park*, which had been in operation since the 1940s. Prior to that the site would have been the location of the Colohatchee FEC Railway depot.



In 2019, *Wilton Drive* returned to two lanes in the interest of safety for pedestrians, bicyclists, and motorists. The next phase includes irrigation and landscaping to make the Drive even more attractive.



Wilton Drive looking south at NE 8<sup>th</sup> Terrace Photo: [roadwaysafety.org](http://roadwaysafety.org)



# THANK YOU FOR YOUR KIND ATTENTION DURING THIS WILTON MANORS HISTORICAL SOCIETY PRESENTATION FOR THE 75<sup>TH</sup> ANNIVERSARY CELEBRATION

We close with these 1947 lifestyle images which reflect Dave Turner's statement:  
*"Wilton Manors is a monument to cooperation among good people ..."*



Les, Marcia, and baby Tracy Stafford



Community barbecues were held to raise funds for civic projects, including the Village Hall.



Homes typical of the era on N.E. 21<sup>st</sup> Ct. toward Wilton Dr.

**SCARED OF HIGH PRICES? SEE THESE HALLOWEEN SPECIALS!**

**SPECIALS FOR THURS.—FRI.—SAT.**

2 lb. Package Cheese	<b>VELVETA</b>	<b>79<sup>c</sup></b>
Large	<b>Rinso</b>	<b>27<sup>c</sup></b>
3 lb. Can	<b>Bakerite</b>	<b>99<sup>c</sup></b>
Can Milk	<b>Carnation</b>	<b>3 For 38<sup>c</sup></b>
	<b>SAVO BLEACH</b>	<b>9<sup>c</sup> qt.</b>
Chuck	<b>Roast</b>	<b>59<sup>c</sup> lb.</b>
Sirloin or T Bone	<b>Steak</b>	<b>69<sup>c</sup> lb.</b>
Morrill's	<b>SLICED BACON</b>	<b>59<sup>c</sup> lb.</b>
Shipped Grade "A" Medium	<b>Eggs</b>	<b>66<sup>c</sup> Doz.</b>

**Meal of the Week BY MARY LEE TAYLOR**

**Pork Goms with Creamed Peas**  
 Creamed Peas  
 Glazed Sweet Potatoes  
 Creamed Spinach  
 Hot Rolls  
 Butter or Margarine  
 Change Shrimp  
 (with optional sauce)  
 (with optional sauce)  
 (with optional sauce)

**Pork Goms with Creamed Peas**  
 Turn on covers; set at slow (325° F.).  
 Grease 8 three-inch muffin or constant shape. Mix together peas, milk, onion, sage, salt and pepper. Pack into greased cups. Bake 45 minutes, or until brown. Remove covers from apples; cut each apple into 4 slices. Dip each slice of apple into margarine. Cook until brown in hot shortening. Remove from heat and top with the apples. Fill centers of apple rings with cooked peas or soy peas. Serve with creamed peas. Makes 4 servings.  
 You Will Need:

**PET MILK** 3 cans 41c  
 Canned Peas .2 for 25c

Miracle Whip	55 <sup>c</sup> Quart
All Popular Brands Cigarettes	1.81 Carton
Skyline Apple Juice	2 Quarts for 25 <sup>c</sup>
Green-Hard Head Cabbage	5 <sup>c</sup> lb.
Iceland Lettuce	2 Heads for 25 <sup>c</sup>
Tokay Red Grapes	2 lbs. for 19 <sup>c</sup>
Sunnyland, Colored, in Quarters Oleo	53 <sup>c</sup> lb.

**MANOR MARKET**  
 2205 WILTON DRIVE WILTON MANORS

STORE HOURS  
 7 a.m. to 7 p.m.—Week days  
 7 a.m. to 6:30 p.m.—Fri. and Sat.  
**PLENTY OF FREE PARKING SPACE**