

# *Vintage Images of Wilton Manors*

- A visual chronical from its beginnings through the booming 1950s -



1926 South Entrance to Wilton Boulevard

© Wilton Manors Historical Society Digital Collection



-A WILTON MANORS HISTORICAL SOCIETY PRESENTATION FOR THE-

## **2022 Broward County Pioneer Day**

Curated by Ron and Mary Ulm

Comments, Questions or Need Additional Information? Email: [wmhs@wmhistory.org](mailto:wmhs@wmhistory.org)

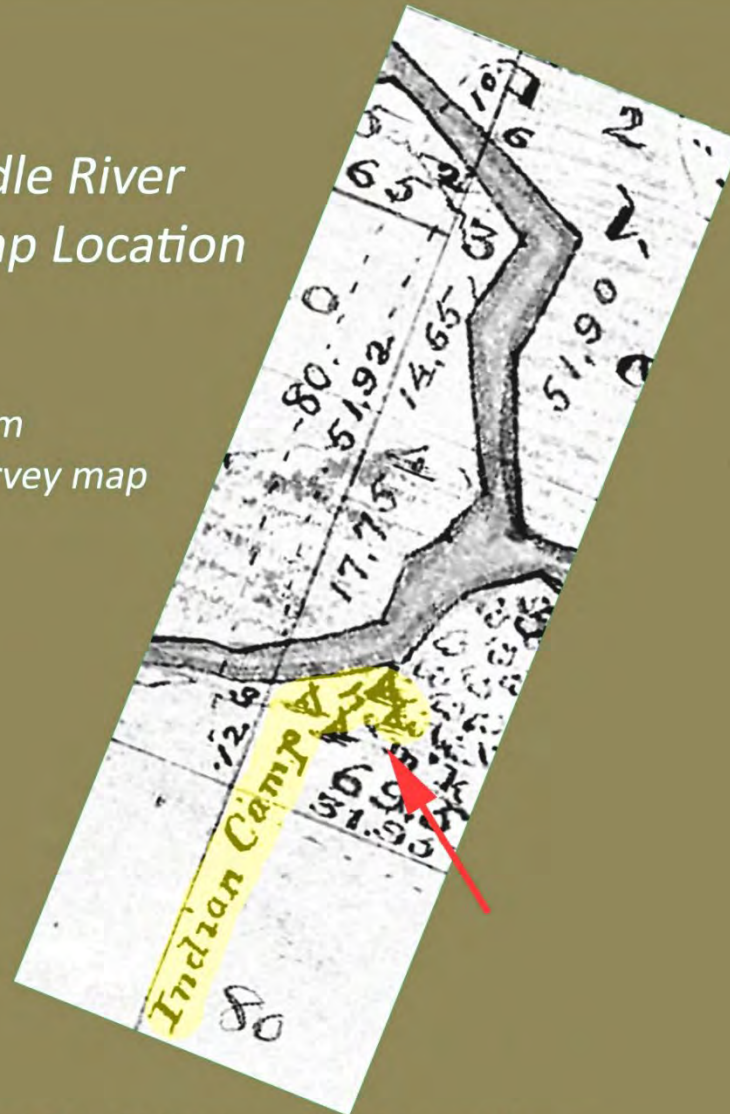
THIS PRESENTATION AND INCLUDED IMAGES ARE ©WILTON MANORS HISTORICAL SOCIETY.

Please respect our intellectual property rights—permission and attribution are required for any re-use.

An **1870s** map documents the **first permanent settlement** in the Wilton Manors-area; a **Seminole camp** on the south fork of the Middle River (near 26<sup>th</sup> St and Federal Highway). The **first permanent white settler, W.C. Collier**, purchased his nearby farm on the north fork of the river in **1893**.

## 1870s Middle River Seminole Camp Location

Extract from  
M.A. Williams survey map





By the *early 1900s* the area had developed into the farming community of *Colohatchee*. Colohatchee spanned roughly the area of today's Wilton Manors and Oakland Park.



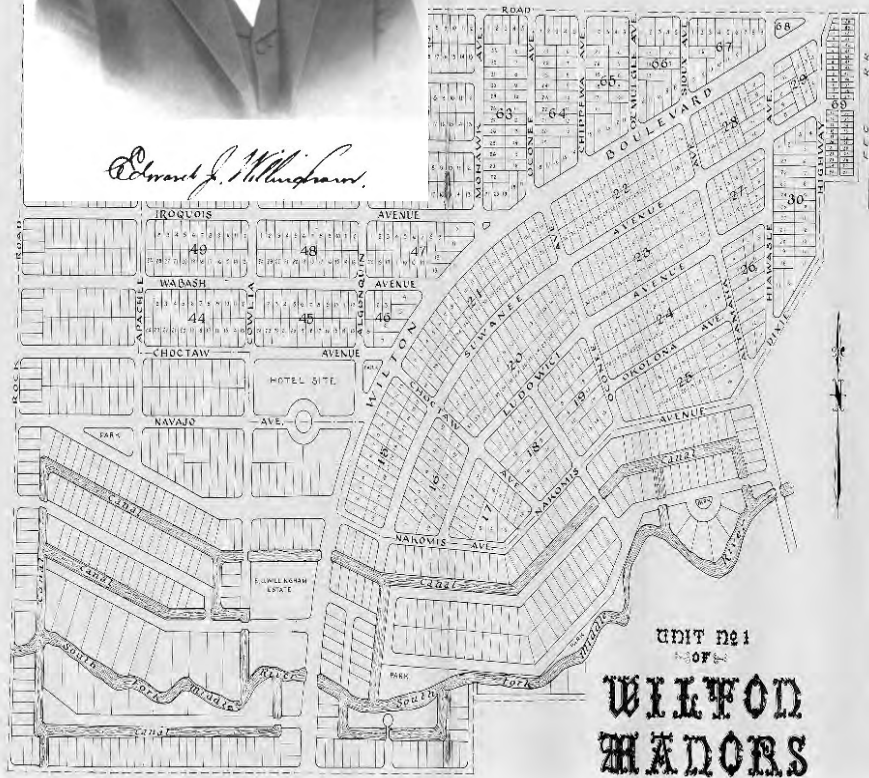
The social and business hubs of the community were the *Woman's Club* (above) and *FEC railway depot* (located near the now 24<sup>th</sup> St & Dixie Highway).



In 1925 E.J. Willingham, a successful Georgia entrepreneur, platted 345 acres of Colohatchee as **Unit 1 of Wilton Manors**--"Fort Lauderdale's Beauty Spot". Willingham had earlier platted *Lauderdale Beach*.



*E. J. Willingham*



A PLAT OF FORT LAUDERDALE'S BEAUTY SPOT

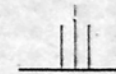


--to--

# WILTON MANORS

"Fort Lauderdale's Beauty Spot"

eminently desirable as a home community  
 distinctive  
 beautiful  
 exclusive  
 complete in development  
 lovely in harmony  
 superbly ideal



*Tract located within the city limits of Fort Lauderdale, —two miles north on the Dixie from the center of the city's business district—between the East and West Dixie Highways.*

*Over \$250,000 worth of lots have already been sold before the formal has been announced. 200 magnificent lots are now on sale at \$3,000 with easy terms. An unusual investment opportunity!*

**E. J. Willingham Development Company**

Owners and Developers  
 Sales Offices

Administration Building

Wilton Manors



Noted architect **Francis Abreu** designed the *entrance to Wilton Manors*--on Wilton Boulevard at Dixie Highway. Included were a sales office, entrance gateway and observation tower. While the entrance was completed, the rest of the project fell victim to the 1926 hurricane and *The Great Depression*.



FORT LAUDERDALE HISTORICAL SOCIETY COLLECTION - for use by Wilton Manors Historical Society only  
-Do not distribute to any other organization or individual-



Willingham's sales brochure cover

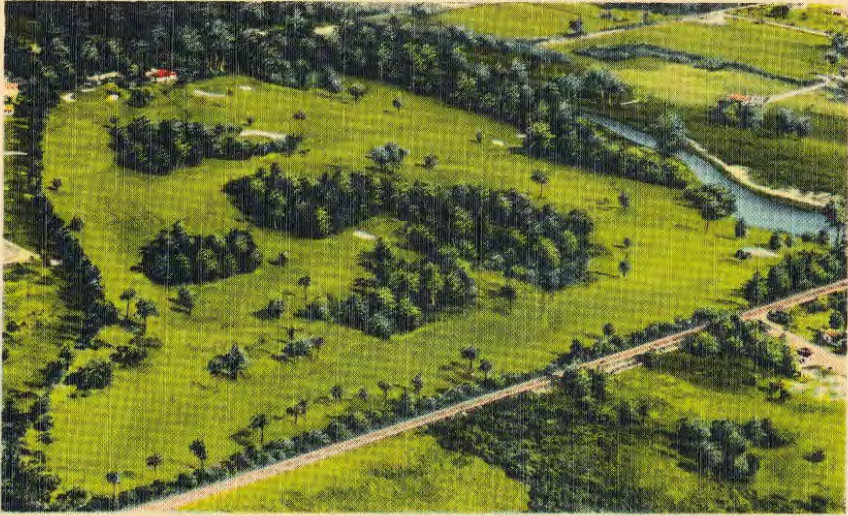


1929 school field trip to visit the Towers

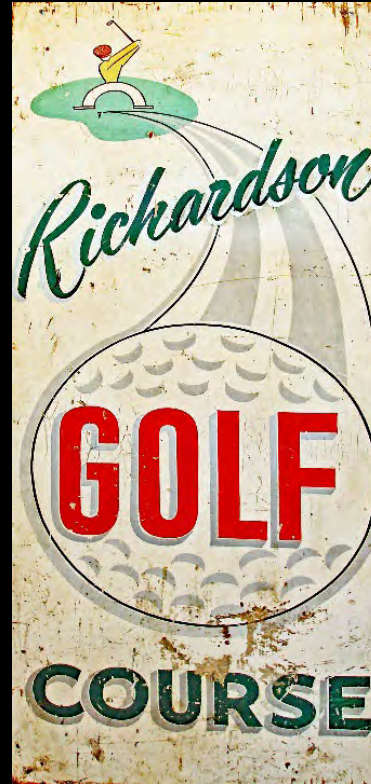


In 1938, with the Great Depression ending, golf course builder *George Richardson* purchased 40 acres, including Willingham's estate home; and the family *established Broward County's third golf course.*

Richardson Golf Course, NE 4th Ave., Fort Lauderdale, Florida.



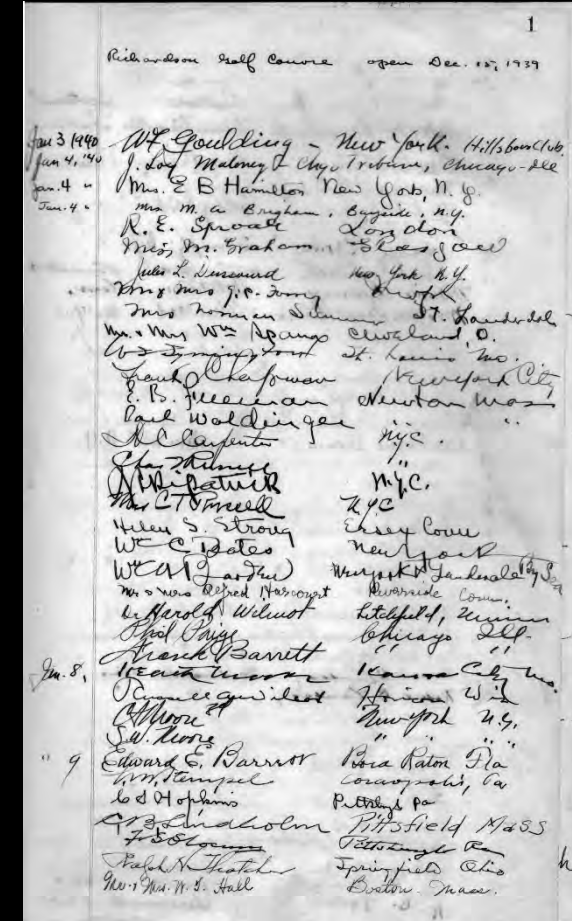
78455



©Wilton Manors Historical Society Digital Collection all rights reserved



#9 GREEN THE RICHARDSON GOLF COURSE  
FT. LAUDERDALE, FLORIDA E-795



1939 first players sign-in sheet



The end of World War II finally brought renewed development to Wilton Manors. In **1946 Alvar Hagen** purchased land and **built the first commercial buildings on Wilton Drive**.



In 1947 the *Wilton Manors Civic Association* petitioned to incorporate as the *Village of Wilton Manors*. The Village did not tax real property. Revenue came from a cigarette sales tax and utility franchise fees.





In **1949** pioneer **Dave Turner** donated land for a **Village Hall**. It was built by Civic Association volunteers, and paid-for by various fund-raising events; including the famous Village barbeques.



**VILLAGE HALL** — A tribute to the civic pride of rapidly growing Wilton Manors is the village hall, shown above. The building was constructed by the labor of the villagers, who spent their off time on Saturdays in working on the building. Wilton Manors is claimed by Mayor David Turner to be the fastest growing community in Broward county. At left is a new model home typical of those being built daily in the community.



Turner (left) with Chairman of the Wilton Manors Civic Association, Norman Malcolm, at Village Hall groundbreaking)

In **1952**, the Village's *first police and fire services* were established. By **1955** Wilton Manors was a "City" rather than a "Village". City offices operated from a storefront at 2197 Wilton Drive.





1952 also marked the opening of the new *Wilton Manors Elementary School*.



Also in 1952, to spur growth on the east side, developers *built a bridge that linked Wilton Manors with Fort Lauderdale*; via "Galt Boulevard" (now N.E. 26<sup>th</sup> Street) to the Federal Highway.

©Wilton Manors Historical Society Collection

# WILTON OAKLAND

## SUN

Volume 1 — Number 16

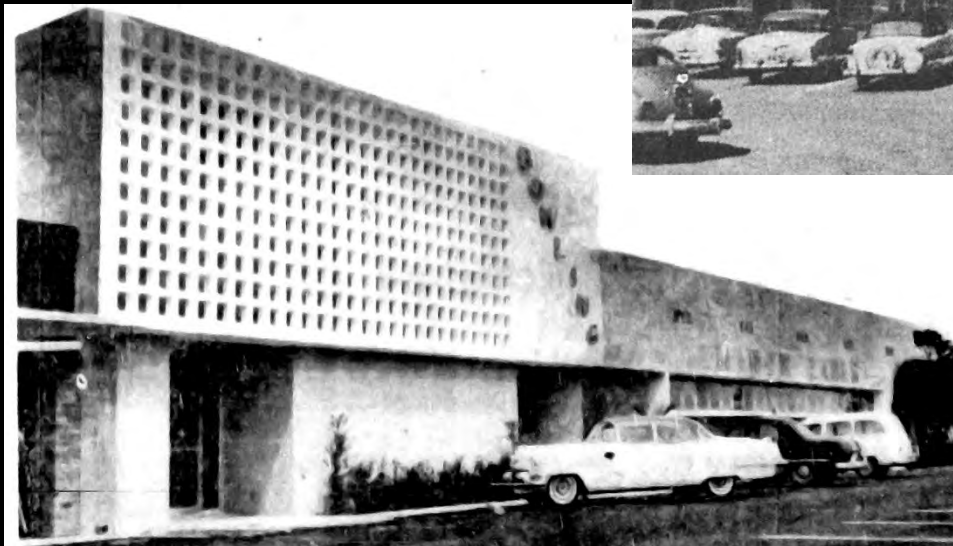
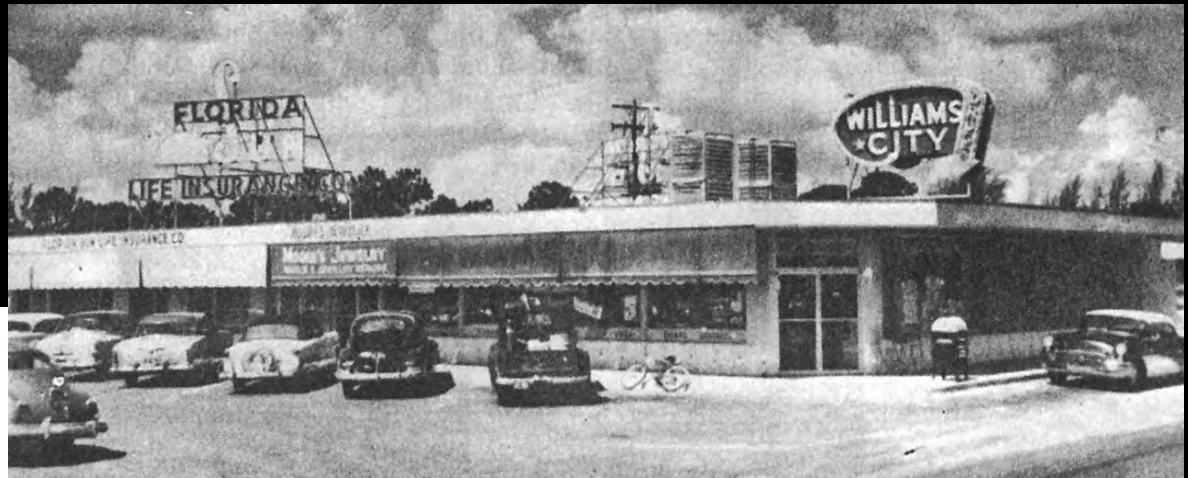
Thursday, December 25, 1952



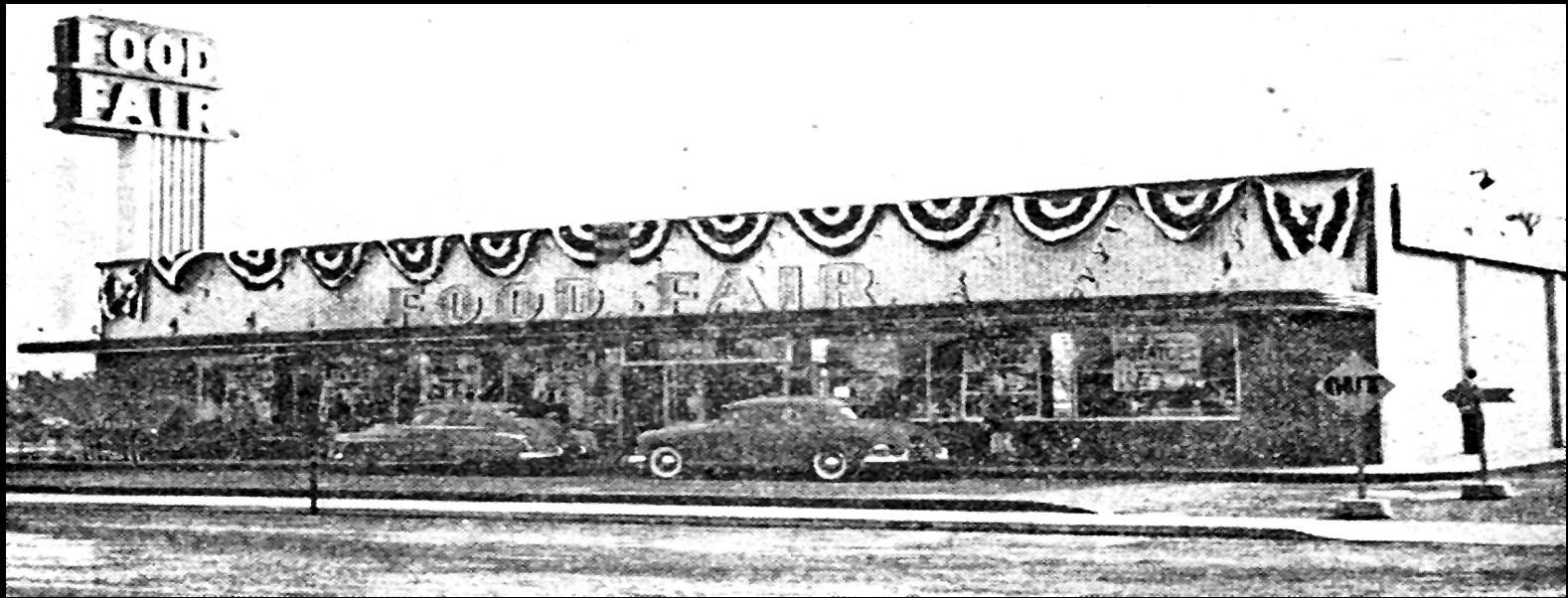
This is only part of the crowd of many hundreds jamming the new 26 Street-Galt Blvd. bridge over Middle River Sunday afternoon for the grand opening of the new span which now gives Wilton Maonrs a direct connection with Federal highway and a shorter route to the beach. Completion of the bridge is expected to quickly accelerate the alrady rapid dvelopment of this entire aera.



With completion of the bridge, 1953 saw *extensive commercial development* along “Galt Boulevard”.



1953 also brought the *first chain supermarket, Food Fair*, to Wilton Drive. This prompted a major modernization of the venerable mid-1940s *Manor Market*. By 1957 they were joined by *Stevens Market* on Wilton Drive and *Grand Union* on Dixie Highway.





In 1955, to accommodate the numerous and varied businesses along Wilton Drive and to facilitate the movement of traffic in and out of the City, *Wilton Drive was expanded from two-lanes to four.*

14 THE LANTANA DAILY NEWS, Fri., May 6, 1955

# TOMORROW IS THE BIG DAY!

# ★ WILTON MANORS ★

# FIESTA

Celebrating the **FORMAL OPENING** of BEAUTIFUL  
**NEW FOUR-LANE WILTON DRIVE**

**TONIGHT and TOMORROW**

Come on out and see the beautiful new 4-lane Wilton Manors in its glory. It's here that you'll see the most of the new park-up and road of all the new expanding a pleasure with its expansion.

Also see the Big Canteen on tonight and tomorrow and see a lot more of the new road with its 4-lane drive in Wilton Manors!

INVESTIGATE WILTON MANORS AS THE PLACE TO LIVE AND SHOP

Complete Guide to Wilton Manors Inc. Incorporation

Residential	200	100
Commercial	100	50
Schools	100	50
Business	100	50

Waiting Periods for 1st Quarter of 1955: Residential \$1,000.00

**HUNDREDS OF DOLLARS OF DOOR PRIZES GIVEN AWAY**  
STARTING AT 5 P. M. SAT.

**Baby SHOW**  
AND  
**DIAPER DERBY**

3 P. M. SATURDAY, MAY 7th - At Wilton Dr. and 21st St.

1 - 1 Year to 2 Years - 2 Years to 3 Years - 4 AWARDS in EACH CLASS

All Age Wilton Manors Member About Baby Show

**FIESTA BOOTHS AND CONCESSIONS**

**HAMBURGERS**  
By Women's Club

**FISH POND and BALLOONS**  
By Junior Women's Club

**COEDS and DART GAME**  
By Club Sewing

**DUNKING GAME**  
By Joyce

**HOT DOGS and POPCORN**  
By P.T.A.

**CAKE WALK**  
By St. Cecilia's Parish

**KIWANIS CLUB**

**Bar-B-Q**

**RIBS and CHICKEN**  
5 to 8 P. M.

SATURDAY, MAY 7th

**BIG CARNIVAL RIDES**  
SPONSORED BY  
**LIONS and J.C.'s**

Fee for both adults and kids - Keller Canteen - Lady - A. Place  
- Family Wheel and 2 Novelty Rides for the Kiddies.

**DANCE 8 P.M.**  
**SATURDAY - NO ADMISSION**  
Music by JESSIE HOWARD'S  
RAMBLIN' REGAT HEAVIES  
SQUARE and ROUND  
NOVELTY and EXHIBITION DANCES  
**BIG CARNIVAL RIDES**

**PARADE!**  
SATURDAY, MAY 7th  
Crowning of Queen



Also in **1955**, pioneer **Al Hagen** donated land for a **public park and community center**; as well as the site on which the **Woman's Club** would be built. In that same year, for a lease of \$1.00 per year, pioneer **Perry Mickel** provided land for use as the City's **first Little League baseball field**.



1955 ca Hagen Park Community Center



1955 ca Wilton Manors Woman's Club



David French when Mickel Field was under construction



From the *late 1940's through the 1950's residences* in Wilton Manors included trailers, homebuilt cottages, traditional wood-frame houses; and post-war contemporary concrete block homes.



2016 N.E. 21st COURT, SOUTH CORAL POINT

**Furnished Waterfront Home  
NOW OPEN FOR  
INSPECTION**

**\$23,950**

Beautifully Furnished by  
WELLEN'S FURNITURE CO.

**TAYLOR BUILDERS**  
Telephone LC 4-0912

This handsomely designed home, situated on Middle River, has 3 bedrooms, 2 baths and enclosed garage, 68 ft. seawall; deep water, with easy access to the Intracoastal and the ocean. The finest of construction (built on piling) . . . Completely waterproofed with Atlas Admix . . . forced-air heat . . . floor-to-ceiling windows in living room and all bedrooms . . . large walk-in closets . . . Bermuda roof. Thermador built-in kitchen with Dutch oven. Fully sodded and landscaped . . . circular driveway.

**DIRECTIONS:**

Federal Highway to N.E. 26th St. (Gall Blvd.) . . . turn west over bridge, and take first left, at Coral Point along brick entrance gate, on N.E. 25th Street . . . then continue to south end of N.E. 20th Ave. Watch for our sign.

And as the **rapid-growth 1950's** came to a close, a proper municipal building, accommodating ***City Hall and Police and Fire Stations***, was built to provide necessary services to an ever-increasing population.



Wilton Manors City Hall in 1959 at 524 NE 21<sup>st</sup> Court

Wilton Manors City Hall #2 1959

© Fort Lauderdale History Center  
Gene Hyde Collection





And we close with these lifestyle images of Wilton Manors from the 40's and 50's:

*"When Life Was Just Simpler Here"*



# BARN DANCE TONIGHT

And Each Saturday  
Beginning 7:45 P. M.  
in  
**WILTON MANORS**  
at  
N. E. 4th Ave. and 20th St.  
with  
**FRANK HAINEY**  
AND HIS HOEDOWN GANG



**2 FOR 32**

A Big Juicy HAMBURGER  
And A Cool Bottle Of Your Favorite BEER



Both for **32¢**

**TROPICAL CLUB**  
BAR AND LOUNGE  
N. E. 4th Ave. & 20th St.  
WILTON MANOR



SCARED OF HIGH PRICES? SEE THESE HALLOWEEN SPECIALS!

SPECIALS FOR THURS.—FRI.—SAT.

2 lb. Package Cheese VELVETA	79¢
3 lb. Can Rinso	27¢
3 lb. Can Bakerite	99¢
Can Milk Carnation	3 for 38¢
SAVO BLEACH	9¢/qt.
Roast	59¢/lb.
Steak	69¢/lb.
SLICED BACON	59¢/lb.
Eggs	66¢/Doz.

**Head of the Head CREAM CHEESE**  
Pork Chops with Creamed Potatoes  
Grand French Potatoes  
Grand French Salad  
Hot Salsas  
Sauce or Margarine  
Coke, Orange Juice, and other beverages available in unlimited quantities.

**Pork Chops with Creamed Potatoes**  
Sundays, October 30, 1955

There are some great deals (10¢ off!) on all the special items. Don't miss them. They are limited quantities. Don't miss them. They are limited quantities. Don't miss them. They are limited quantities.

**PET MILK** 3 cans 41¢  
Canned Peas .2 for 25¢

Miracle Whip	55¢/Quart
Cigarettes	\$1.81/Case
Apple Juice	2 Quarts for 25¢
Cabbage	5¢/lb.
Lettuce	2 Heads for 25¢
Grapes	2 lbs. for 19¢
Oleo	53¢/lb.

**MANOR MARKET**  
2205 WILTON DRIVE WILTON MANORS

STORE HOURS  
7 a.m. to 7 p.m.—Week days  
7 a.m. to 8:30 p.m.—Fri. and Sat.

PLENTY OF FREE PARKING SPACE



GET "MOSQUITO-PROOFED"

Bothered By Skeeters? We Got the Solution!

**ATOMIC REPELLENT** ONE WEEK ONLY **9¢** Bottle

WE MAKE IT OURSELVES — YOU KNOW IT'S GOOD

**WILLIAMS CITY DRUGS**

1402 N. E. 26th Street      LO 4-4531      Ft. Lauderdale

