

Colohatchee

COLOHATCHEE is the first station three miles north of Ft. Lauderdale and within half a mile of the Southeastern Packing Plant. On either side of this hamlet is a small river where bass and sergeant play. These streams run through most beautiful scenery, with palms and pines overhung with masses of trailing gray moss.

Out from Colohatchee are many truck farms, from which are shipped carloads of winter vegetables and fruits; the packing

sheds make an interesting place during the shipping season.

The Woman's Club at this village is very active, and the results accomplished by this band of women give evidence of the enterprise they have, and the spirit of co-operation in the promotion of their plans.

Free bus transportation is furnished by the school board for the children to the Ft. Lauderdale schools, where they enjoy every educational advantage.

WELCOME TO COLOHATCHEE, FLORIDA

Excerpts from 1924 and 1925 Broward County Tourism Brochures

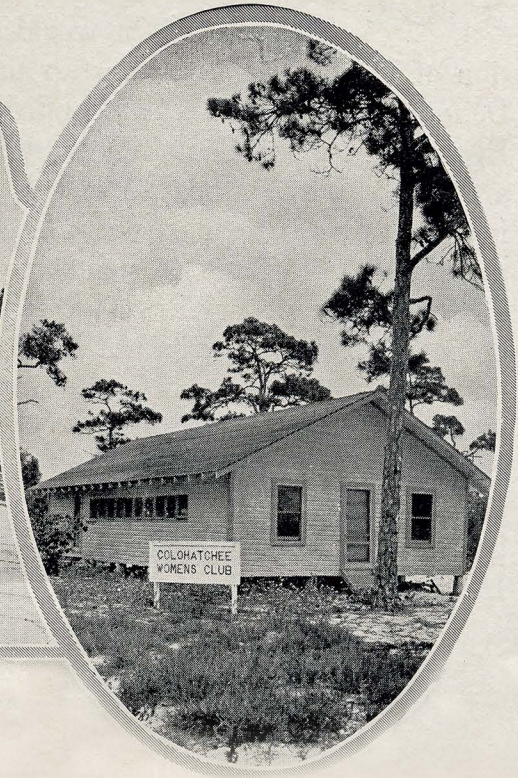
Broward County Historical Commission Collection



THE village of Colohatchee, located just north of Fort Lauderdale, on the Dixie Highway, is a shipping point for large quantities of produce. The beautiful scenery around Colohatchee is a delight to the eye. A small river, where bass and sergeant entice the angler, runs near the hamlet. Picturesque palms and pines overhung with characteristic Spanish moss form as pretty a setting as one could desire.

The Woman's Club of Colohatchee is very active and enterprising in the upbuilding and welfare of their village.

A large amount of development and improvement work has been completed near Colohatchee.



The village of Colohatchee was the predecessor of Wilton Manors. Florida East Coast Railway documents reference Colohatchee as early as 1903. The hub of the community was in the area around Dixie Highway and Mahannah Rd. (NE 24th Street)--where the Woman's Club and FEC Railway Freight Station were located. The Southeastern Packing Company, pictured above, was just across the North Fork, at the end of now NE 12th Terrace in Oakland Park. The Woman's Club, already nationally chartered with 18 members by 1910, located their clubhouse in what is today Equality Park. It relocated to Oakland Park in 1939. Anecdotal accounts suggest the FEC station was physically moved in the late 1920s a few miles north to "Floranada"; perhaps to serve as a passenger station for the wealthy patrons of the elaborate, upscale development planned. Floranada failed and the area was developed more modestly to become Oakland Park.

Images edited, enhanced and annotated by Wilton Manors Historical Society